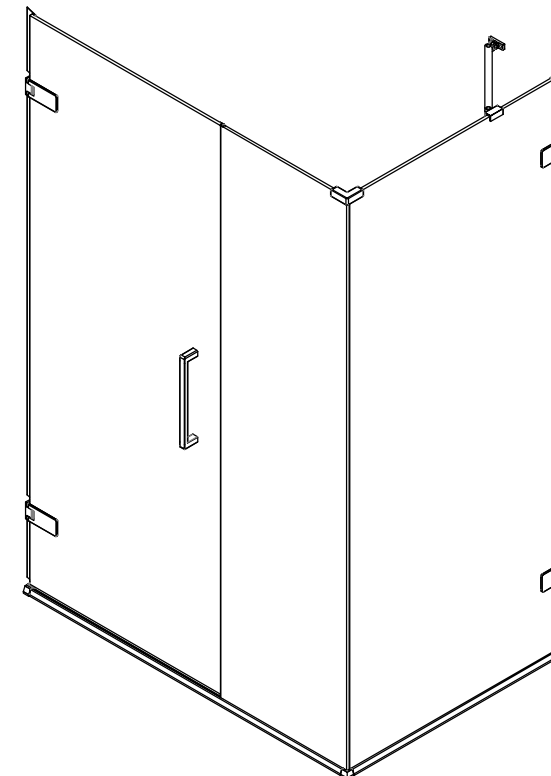


Wall Hinge Door & Inline Panel with Side Panel



INSTALLATION GUIDE

www.merlynshowering.com

CE	
Merlyn Industries Ltd (MER01)	
20	
EN 14428	
Declaration of performance number CEARH1.2	
Shower enclosures with aluminium profiles and safety glass	
Cleanability	: Pass
Impact resistance/ shatter properties	: Pass
Durability	: Pass

MERLYN

Merlyn Showering
Unit 8, Purcellsinch Industrial Park,
Dublin Road, Kilkenny, Ireland.
Tel: 00353 56 779 1555
Fax: 00353 56 779 1576
www.merlynshowering.com

To download the Declaration of Performance (DOP) for
this product please use the link below.
<https://merlynshowering.com/aftersales-support/dop-certs/>

IMPORTANT: Please read the complete instructions before commencing fitting.

Make sure the tray is 100% level in all directions.

Check that you have the tools required.□

Check the installation site is compatible with the sizes of door supplied.□

Check all the enclosure components are present.□

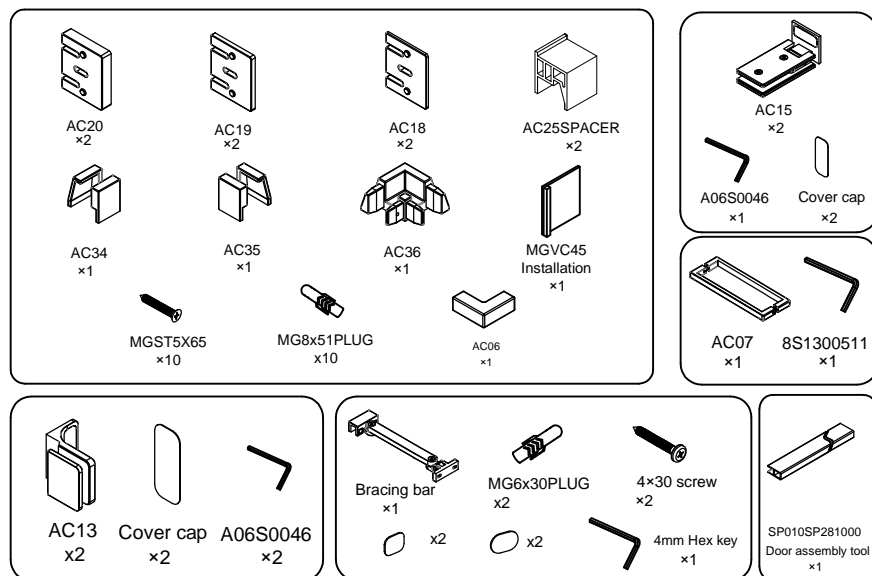
Check the installation kit is complete.□

Do Not attempt to install the product unless you can tick all 4 boxes satisfactory.

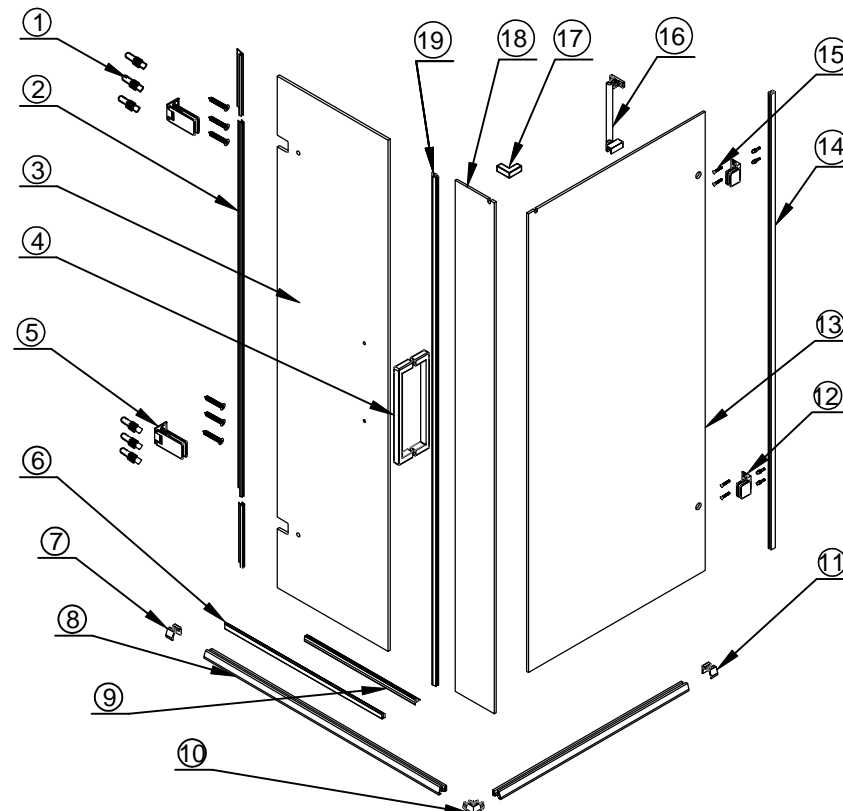
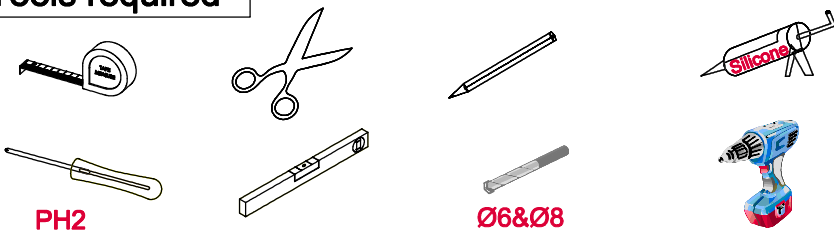
The wall plugs supplied with the installation kit are for use in solid walls. Hollow or 'stud partition' walls will require alternative fixings. Please consult a hardware supplier for the correct type.

ATTENTION: TAKE EXTREME CARE WHEN HANDLING GLASS, WEAR PROTECTIVE EYEWEAR AND CLOTHING. DO NOT LEAVE THE GLASS ON HARD SURFACES AND AVOID CONTACT BETWEEN THE GLASS EDGES AND HARD SURFACES OR IMPACTS DURING THE INSTALLATION.

Fixing kit components



Tools required

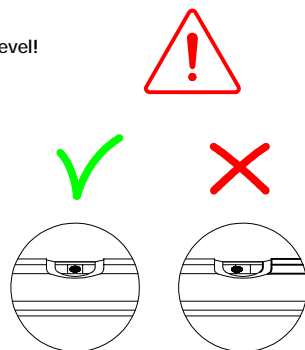
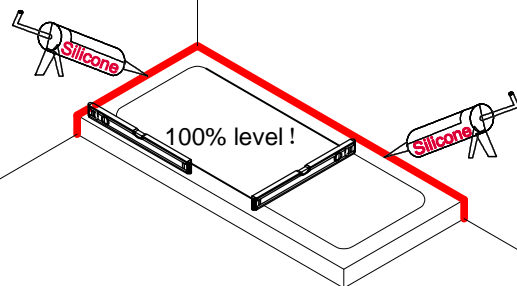


No.	QTY	Part No.	No.	QTY	Part No.	No.	QTY	Part No.
①	10	MG8x65PLUG	⑧	2	AC37	⑮	10	MGST5X65
②	1	MGVC32LSET/LSET	⑨	1	MGVC30A	⑯	1	AC10
③	1	GMGDPA	⑩	1	AC36	⑰	1	AC06
④	1	AC07	⑪	1	AC35	⑱	1	GMGCPB
⑤	2	AC15	⑫	2	AC13	⑲	1	MGVC33A
⑥	1	AC03SL/AC04SL	⑬	1	GHSB			
⑦	1	AC34	⑭	1	AC01			

Step 1

IMPORTANT!

Whether fitting on a tray or on a tiled
Wetroom the tray or floor must be 100% level!

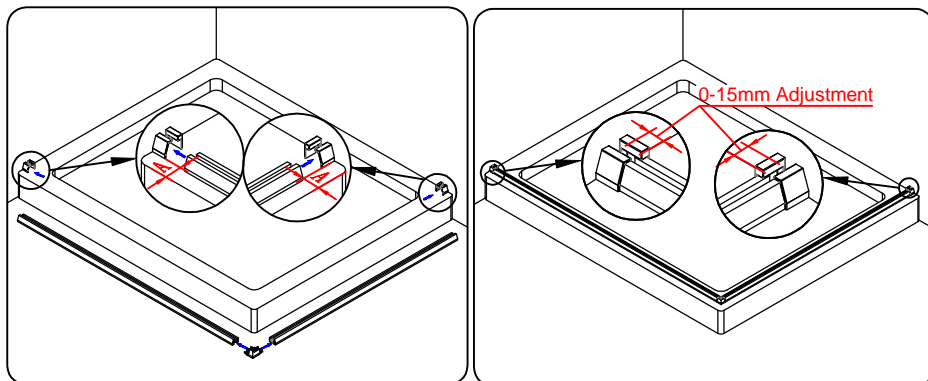


Step 2

Assemble the bottom track, corner bracket and end brackets on the tray. The gap between the ends of the track and the inside edge of the end bracket must be between 0 - 15mm, adjust the position of the track (A) until the gap at both ends is within this range.

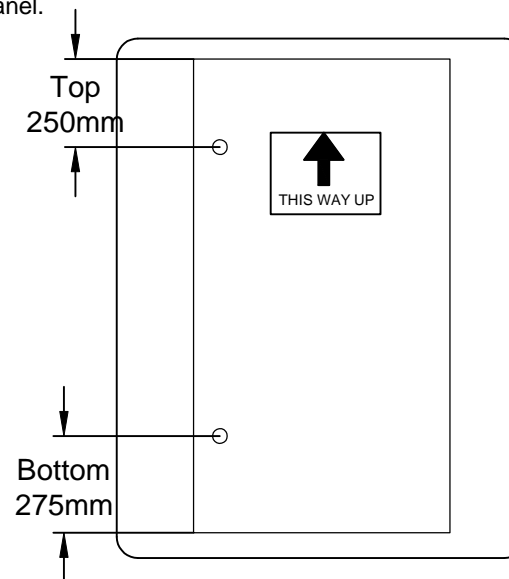
Attention:

- Make sure there are no gaps between the wall and the end brackets, and between the corner bracket and the track.
- Make sure the track is parallel to the edge of the tray.



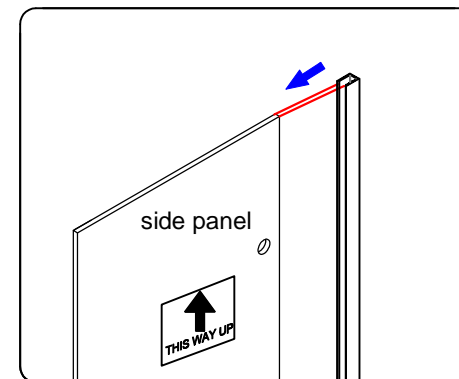
Step 3

Before assembling the brackets to the side panel make sure it is orientated the correct way. Measure hole centres from top and bottom to determine correct orientation of panel.



Step 4

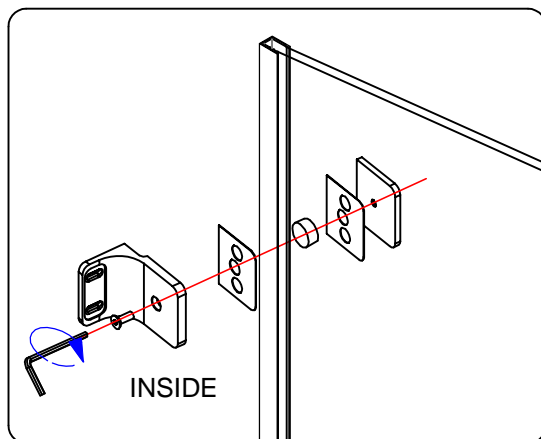
Push on wall profile completely ensuring end is flush with the top of the side panel.



Step 5

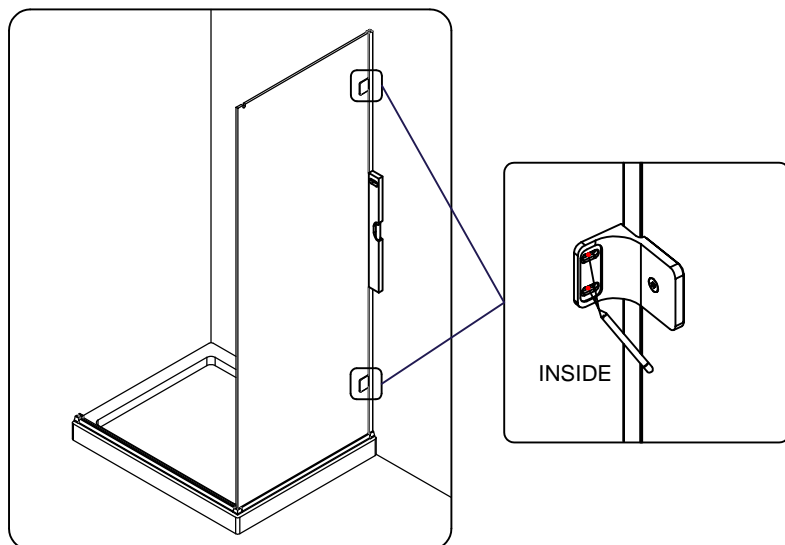
Fix the wall brackets making sure to have the wall bracket in the center of the hole in the glass.

IMPORTANT ! This is critical as it is where the panel adjusts. If the brackets are not positioned in the center adjustment will be affected.



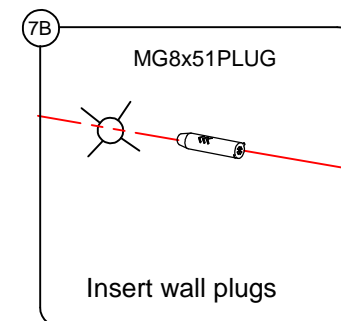
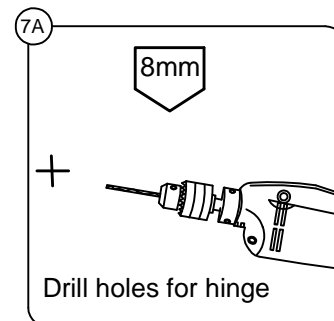
Step 6

Lift the assembled panel into the track. Plumb panel and mark the centre of each slot.



Step 7

Remove both fixed panels and the bottom track, then drill holes with 8mm diameter masonry bit and insert wall plugs. Ensure the wall plugs are flush with the tile.

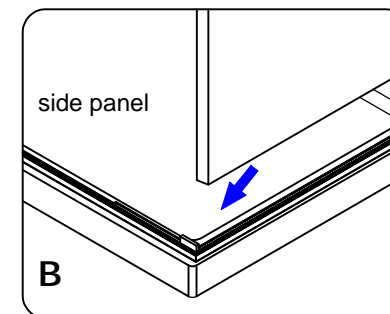
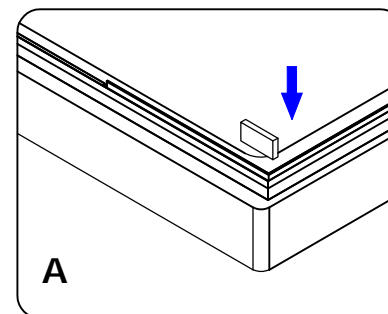


Step 8

Place the assembled bottom track back on the tray, then;

(A) Insert guide spacer to front corner of the track.

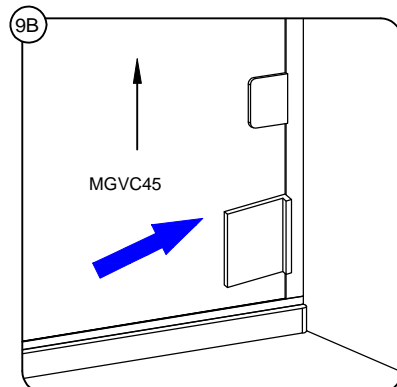
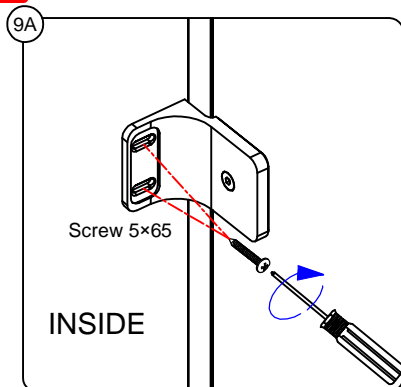
(B) Fit side panel front corner first making sure edge of panel with 3M tape is tight guide spacer.



Step 9

Fix wall brackets to the pre drilled holes. Do not fully tighten, leave enough slack for adjustment. Secure top bracket first.

Note: Hold glass panel and gently tap profile back tight against wall using MDF tool provided, working from bottom to top.

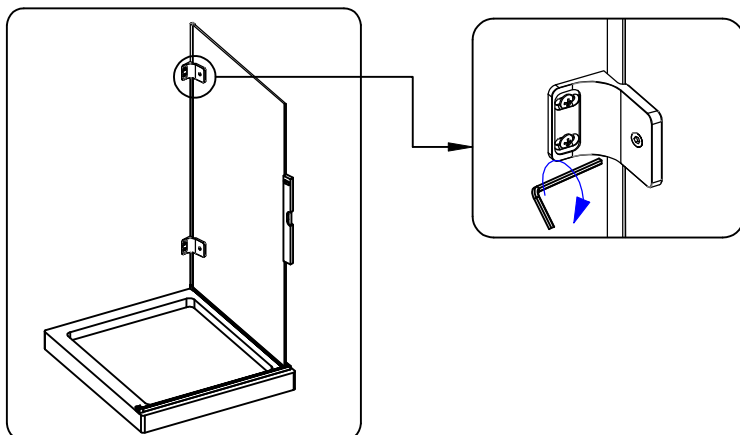


Step 10

Check panel for level and fully tighten screws to wall. Repeat step 14B.

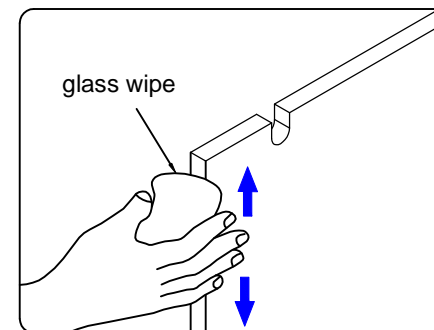
Step 11

Using 4mm hex key fully tighten bracket to glass.



Step 12

Before fitting the front inline panel to the side panel make sure the notch in the glass is to the top and on the side closest to the side panel. Clean the inside of the inline panel (area that will receive the 3M tape).



Attention: 3M adhesive tape is single use only.
You will have just 1 attempt to fit panels.

Step 13

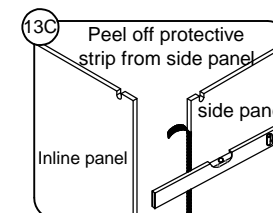
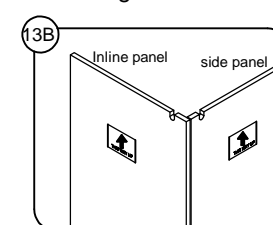
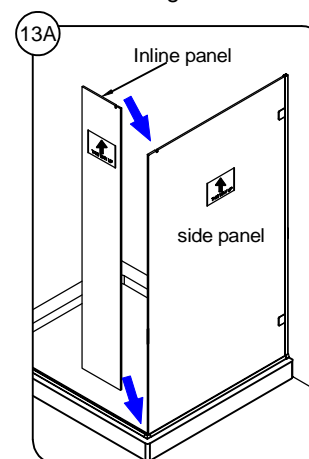
13A Place bottom of panel into front track ensuring outside edge of inline panel is flush with the outside face of return panel.

13B Before you peel off the protective strip from the tape dry fit the panels ensuring outside edge of inline panel is flush to outside face of side panel.

13C Lean inline panel away from fixed side panel and peel off protective strip.

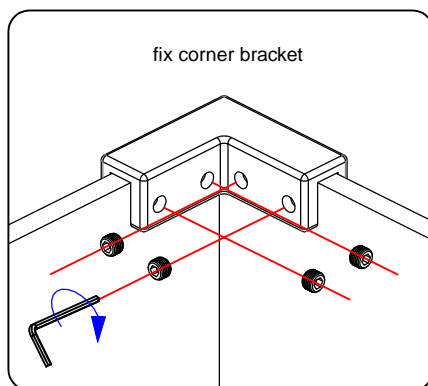
Guide inline panel back to position ensuring panels are flush.

Tip: place a level along face of side panel and use as a guide to locate inline panel.



Step 14

Loosen grub screws on corner bracket and push firmly into position. Fully tighten grub screws once in position.



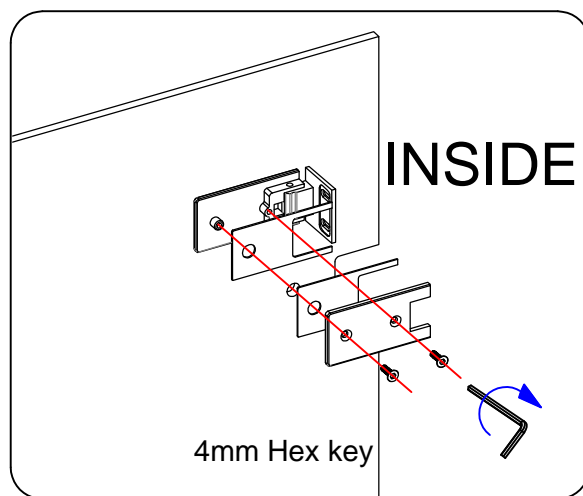
Step 15

Fit hinge to door keeping removable hinge plate to inside of door.

Tip: Use MDF tool for squaring hinges.

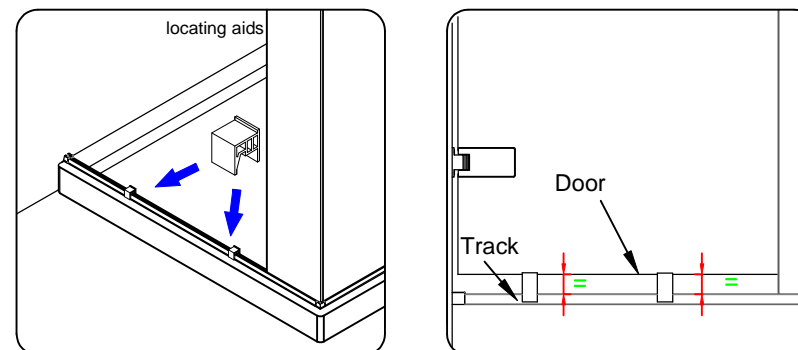


Please note: Place screws and screwdriver inside enclosure as door is fixed from the inside.



Step 16

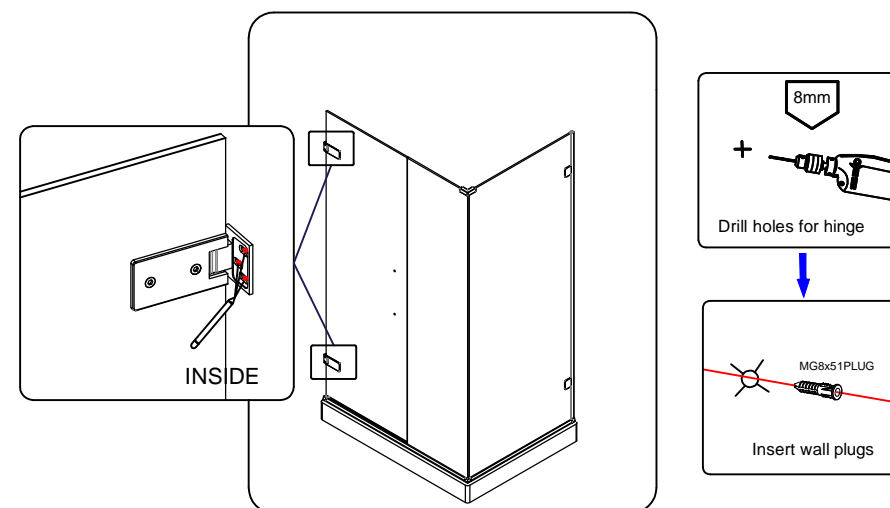
Place locating aids on threshold, one each side of opening. Lift door onto locating aids.



Step 17

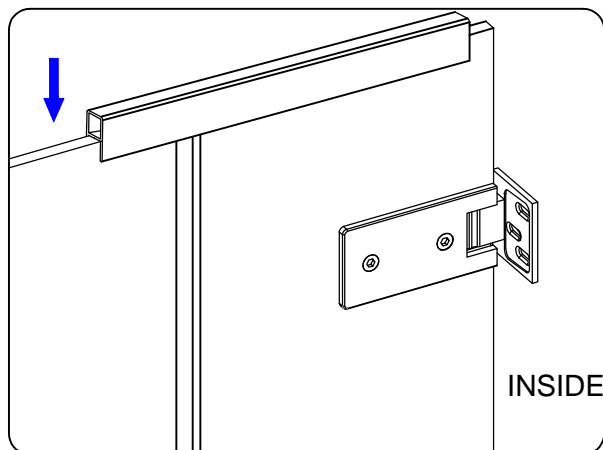
Plumb the front of the moving panel and mark the centre of each slot.

Drill holes with 8mm diameter masonry bit and insert wall plugs. Ensure the wall plugs are flush with the tile.



Step 18

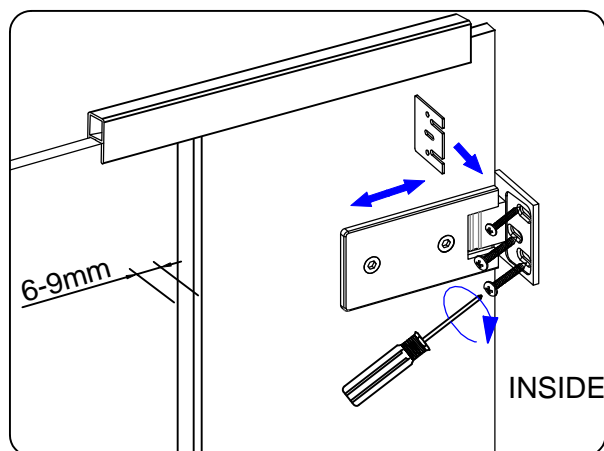
Lift door onto positioning aids. Secure the moving panel in place with the door holding seal SP010SP281000.



Step 19

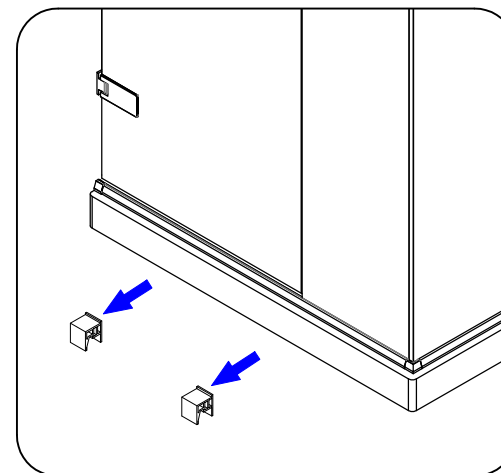
Loosely fix hinges to wall starting at the top. If needed insert packers provided behind hinge plate to ensure even gap from top to bottom between closing edge of door and Inline panel.

Ensure gap is between 6mm and 9mm then fully tighten the wall hinge screws.



Step 20

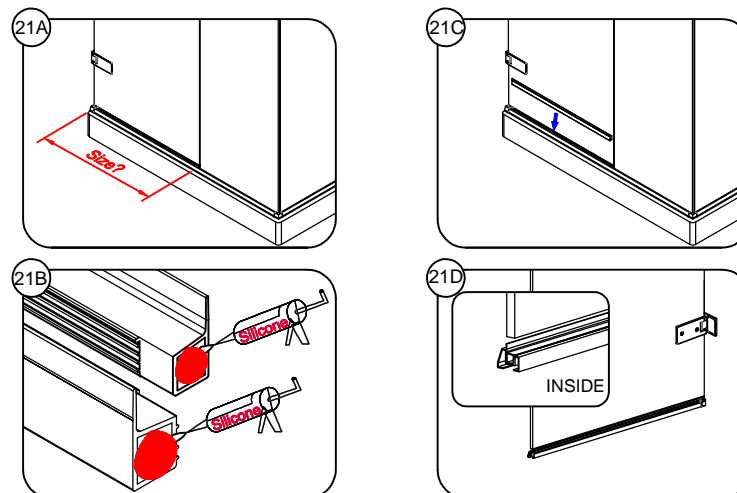
To remove bottom positioning aids open door outwards.



Step 21

Measure distance between the wall and edge of inline panel. Cut infill seal on the inline panel side to this length. Note the notched end of the seal is to be fitted to the wall and the vertical fin is to the front.

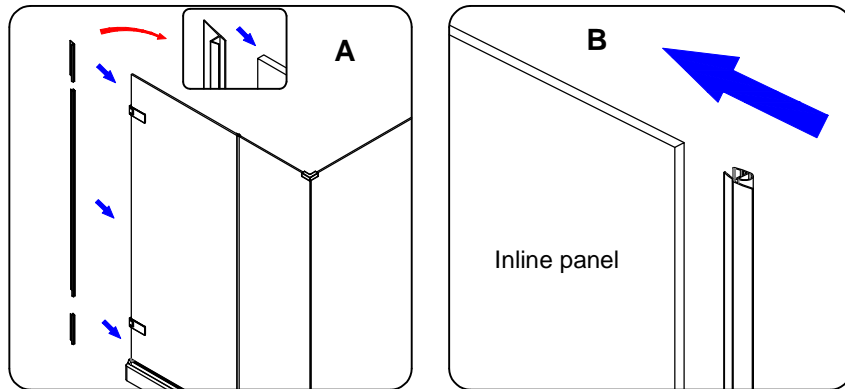
Apply a dab of silicone to both ends, insert to bottom profile.



Step 22

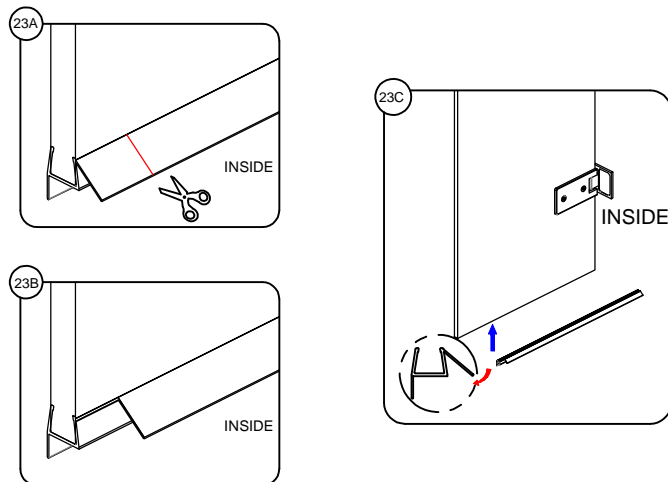
Left and right hand seal kits (A) are provided, determine handing and use appropriate seal kit. Left hand model shown below. Push on longest seal between hinges onto back edge of moving panel. Take shortest seal and fit to top keeping notch to hinge. Repeat with longer bottom seal.

Fit closing seal (B) to edge of the inline panel. Make sure to keep fin to the inside.



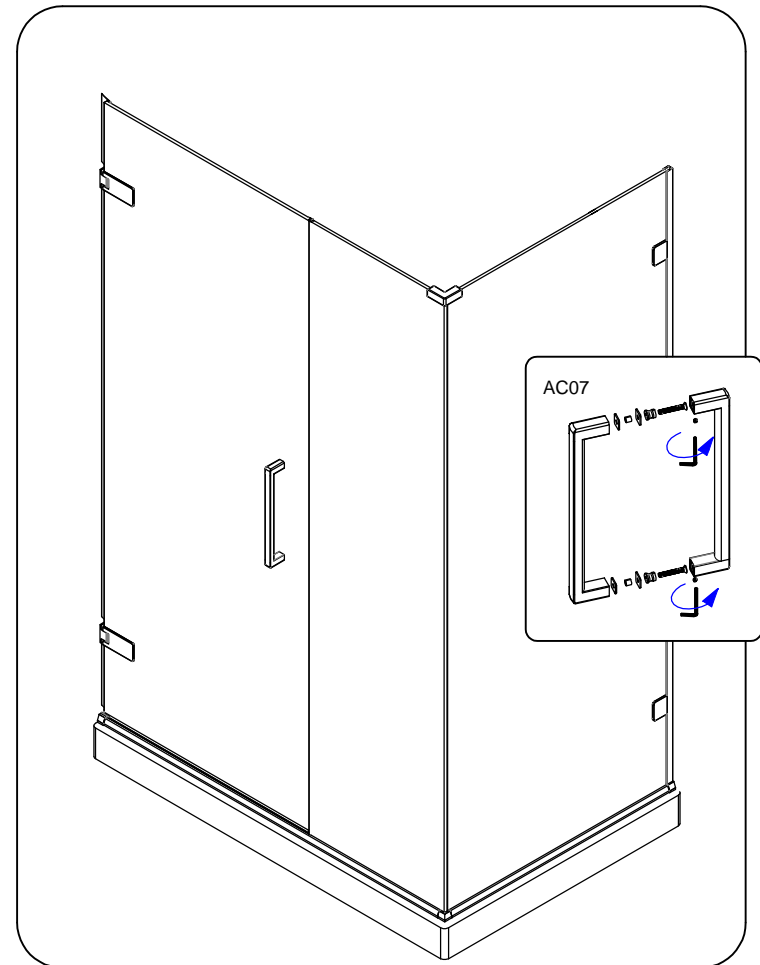
Step 23

Fit bottom door seal keeping longest fin to inside. Notch fin where it meets the closing seal to ensure door closes fully.



Step 24

Fit the handle to the door.

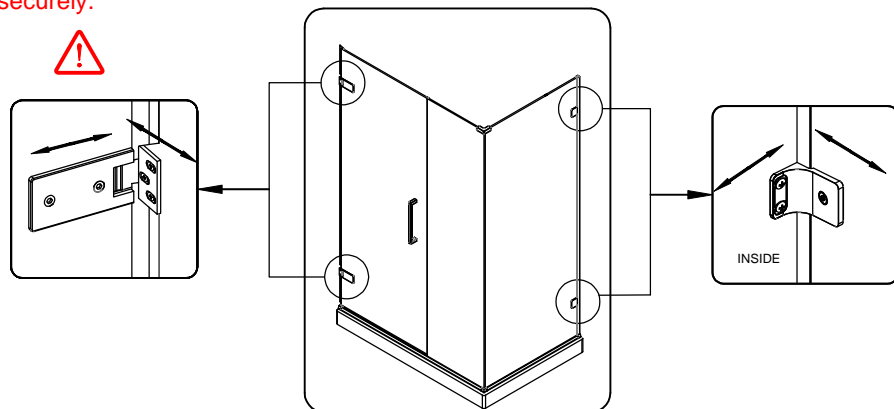


Step 25 Adjusting fixed and hinged panels.

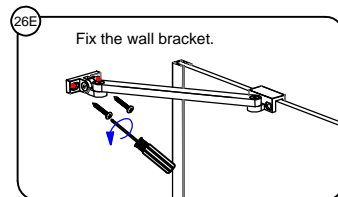
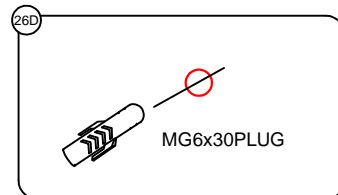
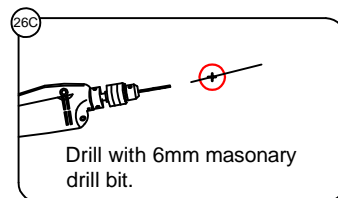
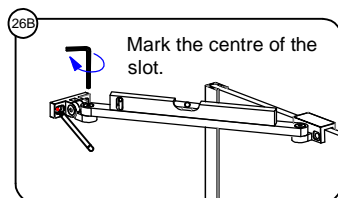
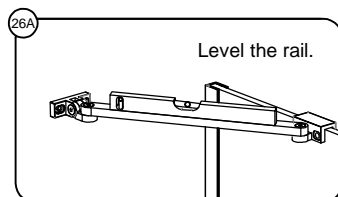
If after fitting doors and fixed panel and you still need adjustment to align doors etc, you can achieve this by loosening the screws fixing the plate/hinge to the wall and the bolts clamping the hinge to the glass.

Adjust the panels until the desired fit is achieved. Fully tighten all fixings.

Note: If not further adjustment is needed make sure all fixings have been tightened securely.



Step 26 Fix the top rails.



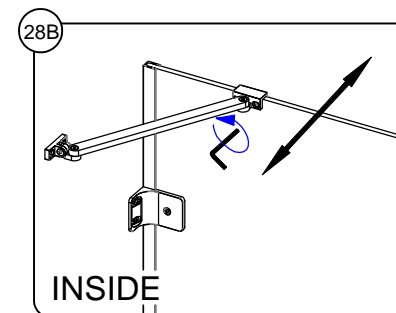
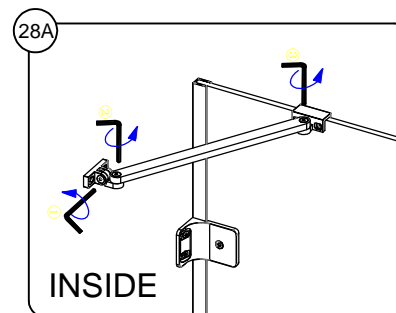
Step 27 Door adjustment

To adjust door to get required contact against closing seal first support door with door locating aids. Loosen all bolts fixing both hinges to glass and move by required amount. Tighten all bolts and remove door positioning aids.

Step 28 Additional adjustment

Where an angled bracing bar is fitted additional adjustment can be made by:

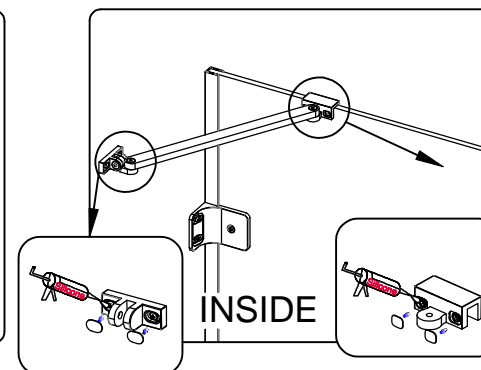
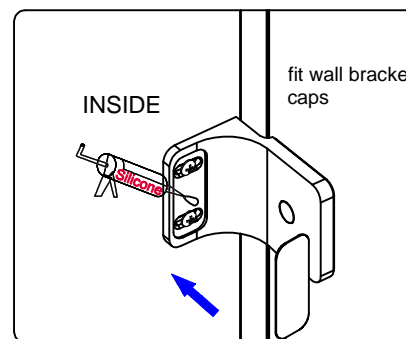
- 1) Loosen the 3 screws clamping the glass.
- 2) Move the glass panel in the direction required (see arrow).
- 3) Tighten the 3 screws.



Step 29 Fitting cover caps.

Peel off protective strip to adhesive tape to back of cap and firmly press in position.

Tip: We recommend that you place a dab of silicone to the back of the cover caps at each end of the tape.

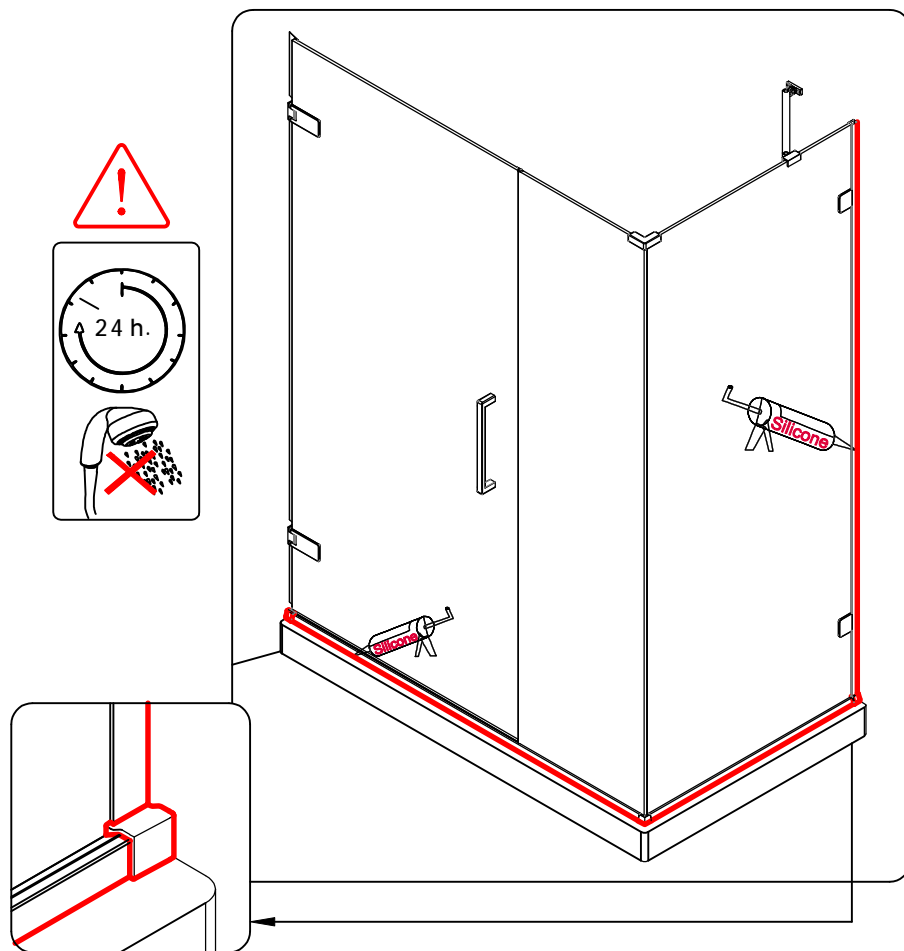


Step 30 Sealing your enclosure.

Make sure all surfaces are thoroughly cleaned and dry before applying sealant.

Only seal the outside of the enclosure (red line). Do not seal the inside.

Seal vertically along the wall, along the outside edge of the bottom profile and any joins in the profile, including where the bottom track meets the end brackets.



CE	
Merlyn Industries Ltd (MER01)	
20	
EN 14428	
Declaration of performance number CEARH1.2	
Shower enclosures with aluminium profiles and safety glass	
Cleanability	: Pass
Impact resistance/ shatter properties	: Pass
Durability	: Pass