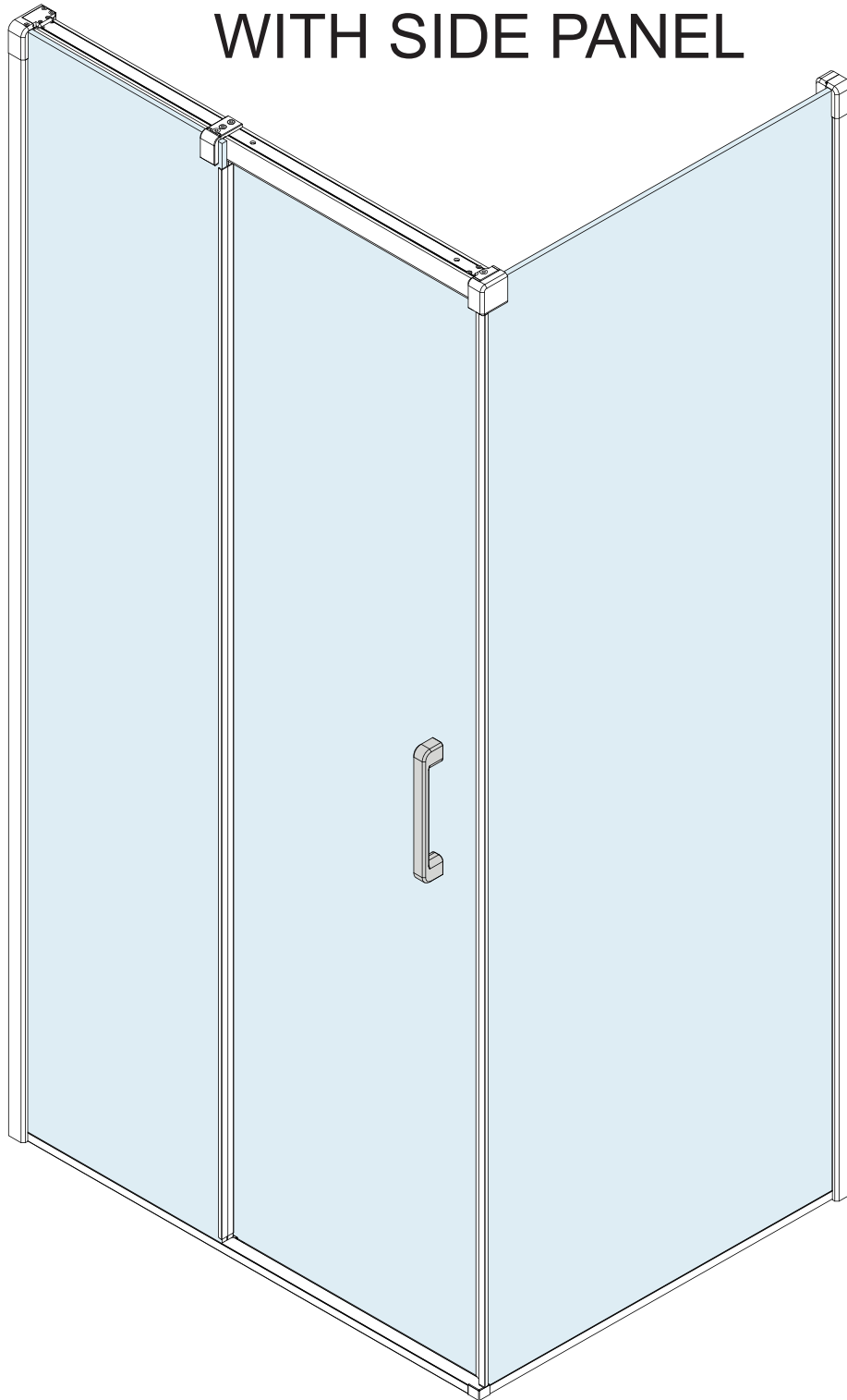


2 PANEL SLIDING DOOR WITH SIDE PANEL



INSTALLATION GUIDE

IMPORTANT: Please read the complete instructions before commencing fitting.

Make sure the tray is 100% level in all directions.

Check that you have the tools required. ☐

Check the installation site is compatible with the sizes of door supplied. ☐

Check all the enclosure components are present. ☐

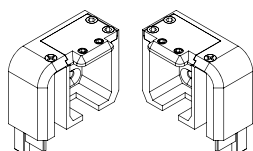
Check the installation kit is complete. ☐

Do Not attempt to install the product unless you can tick all 4 boxes.

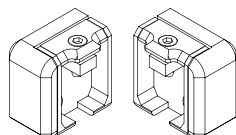
The wall plugs supplied with the installation kit are for use in solid walls. Hollow or 'stud partition' walls will require alternative fixings. Please consult a hardware supplier for the correct type. It may also be necessary to consult your tiling supplier about the correct method for drilling your tiles.

ATTENTION: TAKE EXTREME CARE WHEN HANDLING GLASS, WEAR PROTECTIVE EYEWEAR AND CLOTHING. DO NOT LEAVE THE GLASS ON HARD SURFACES AND AVOID CONTACT BETWEEN THE GLASS EDGES AND HARD SURFACES OR IMPACTS DURING THE INSTALLATION.

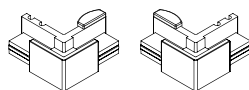
Fixing kit components



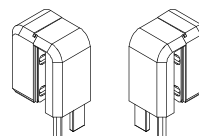
SP0GMS0711



SP0GMS0732

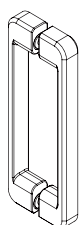


SP0GMS0773



SP0GMS0762

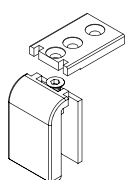
Note: Only one of each supplied as product is handed left or right.



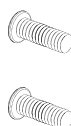
Handle



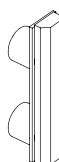
SP0GMS0745



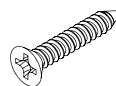
SP0GMS0739



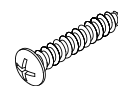
SP0GMS0769



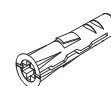
SP0GMS0768



SP0GMS0847



SP0GMS0848



SP0GMS0849



SP0GMS0850

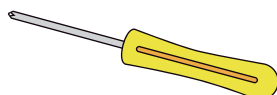
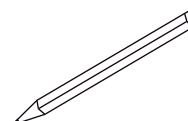
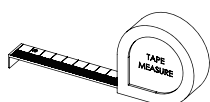


SP0GMS0852

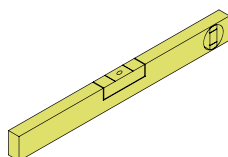


SP0GMS0851

Tools required

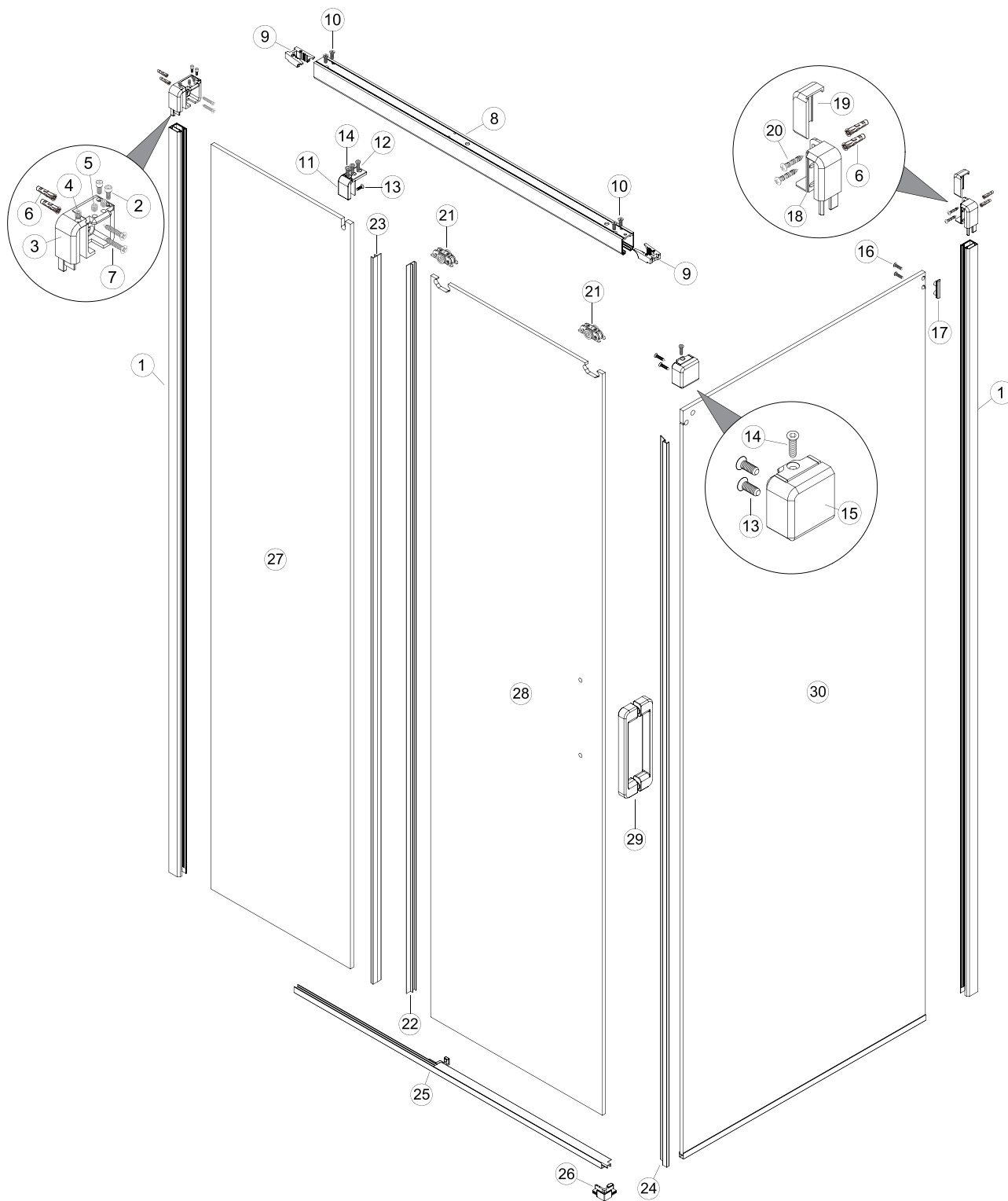


PH2



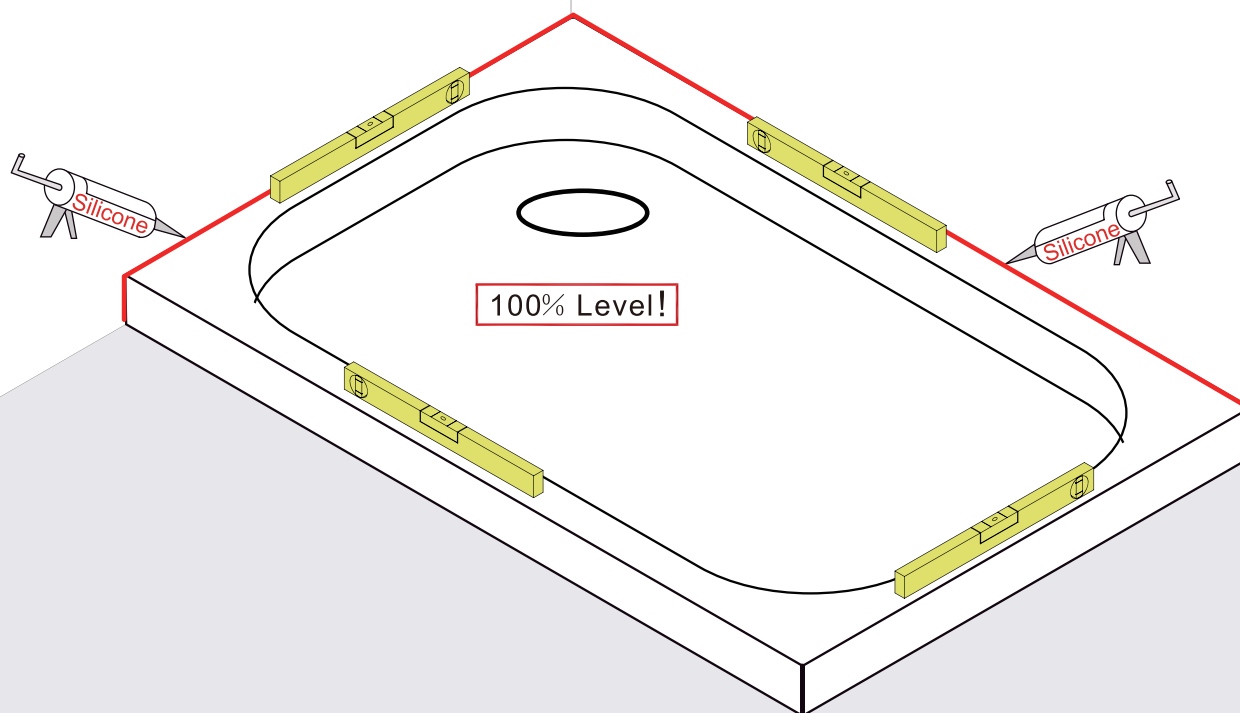
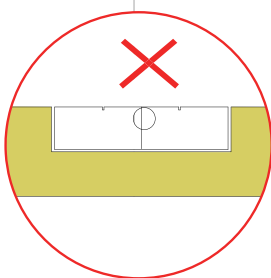
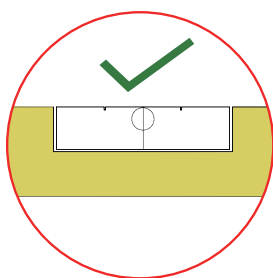
Ø8



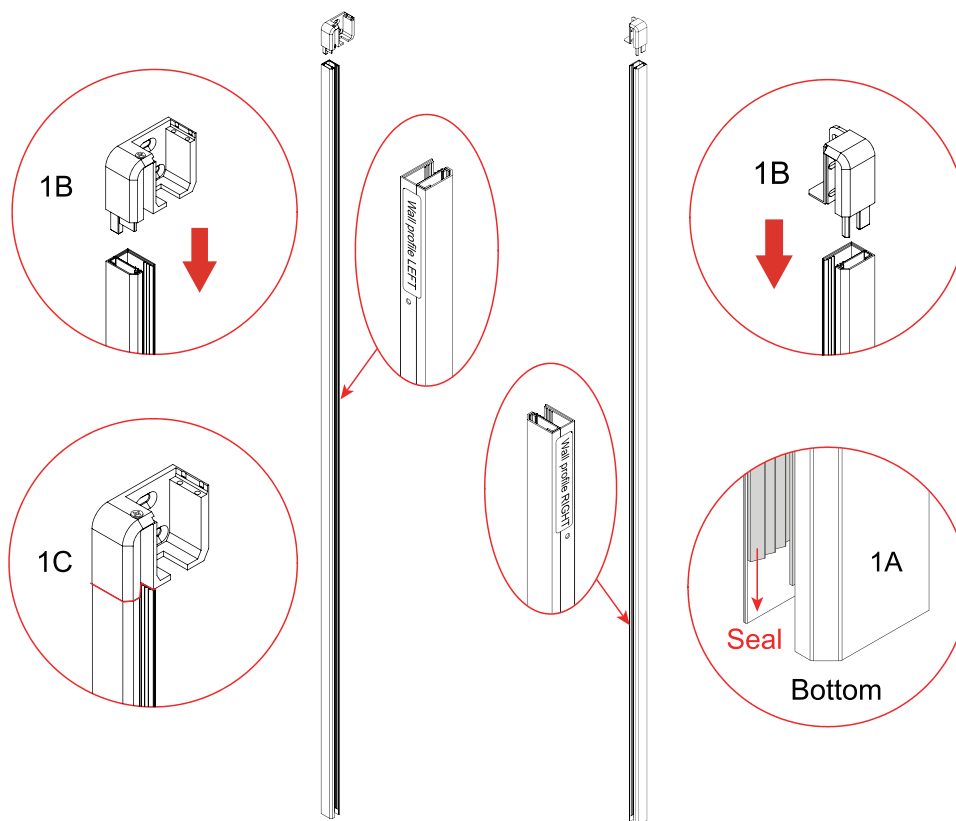


No.	QTY	descriptions	Code	No.	QTY	descriptions	Code	No.	QTY	descriptions	Code
①	2	Wall profile	SP0GMS0680	⑪	1	Middle bracket	SP0GMS0739	⑳	2	Roller	SP0GMS0710
②	2	Bracket fixing screws M4x10	SP0GMS0719	⑫	2	M5x10 screw	SP0GMS0745	㉑	1	Moving panel upright seal	SP0GMS0699
③	1	Fixed panel wall bracket	SP0GMS0711	⑬	3	M5x12 screw	SP0GMS0846	㉒	1	fixed panel upright seal	SP0GMS0698
④	1	Plastic grub screw	SP0GMS0717	⑭	2	M5x14 screw	SP0GMS0738	㉓	1	side panel closing seal	SP0GMS0702
⑤	2	M6x6 grub screw	SP0GMS0718	⑮	1	corner bracket	SP0GMS0732	㉔	1	Threshold	C
⑥	4	Wall plug	SP0GMS0849	⑯	2	M4x12 screw	SP0GMS0769	㉕	1	Threshold corner bracket	SP0GMS0773
⑦	2	5x40 screw	SP0GMS0847	⑰	1	Side panel clamp	SP0GMS0768	㉖	1	Fixed panel	D
⑧	1	Top rail	A	⑱	1	side panel wall bracket	SP0GMS0762	㉗	1	Moving panel	E
⑨	2	Roller stop	B	㉀	1	side panel wall bracket cover cap	SP0GMS0770	㉘	1	Handle	F
⑩	4	Roller stop screws	SP0GMS0709	㉁	2	M5x40 Pan head screw	SP0GMS0848	㉙	1	Side panel	G

Whether fitting
on a tray or on
a tiled Wetroom
the tray or floor
must be 100%
level.



1

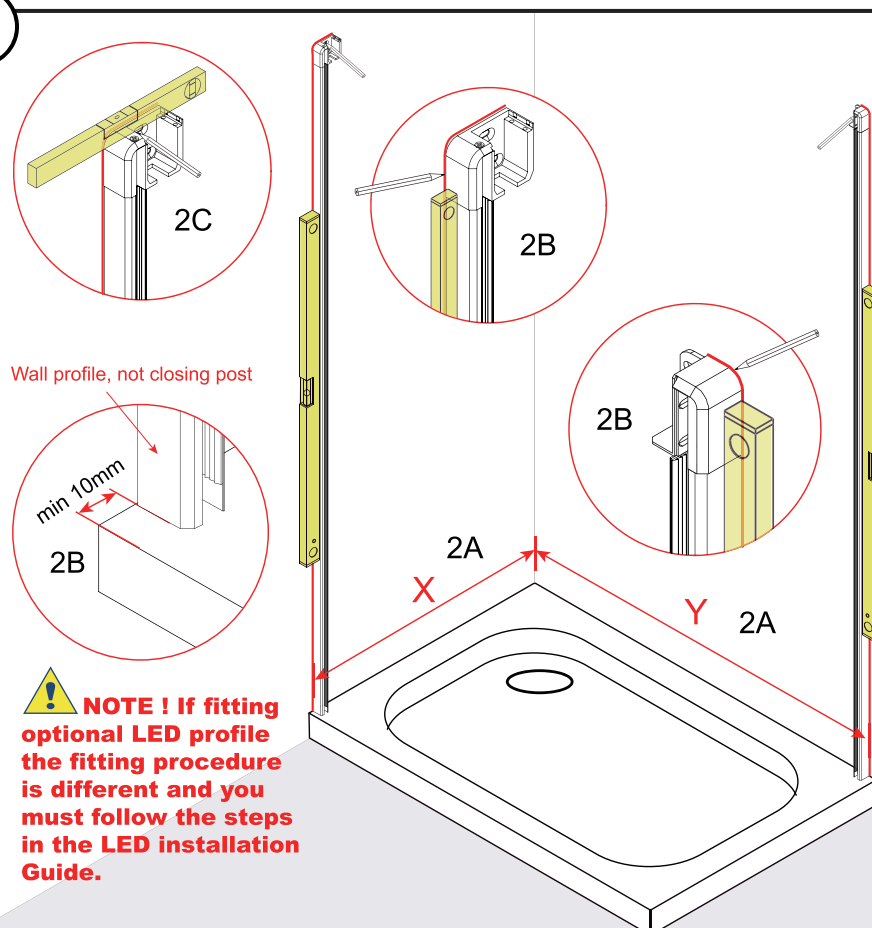


1A Wall profiles are labeled Left and Right so make sure you have noted the handing. The seal should be flush on top and show a gap on the bottom.

1B Insert the bracket into the wall profile.

! 1C WARNING
Make sure the bracket is seated correctly and there is no gap between the join of the bracket and profile.

2



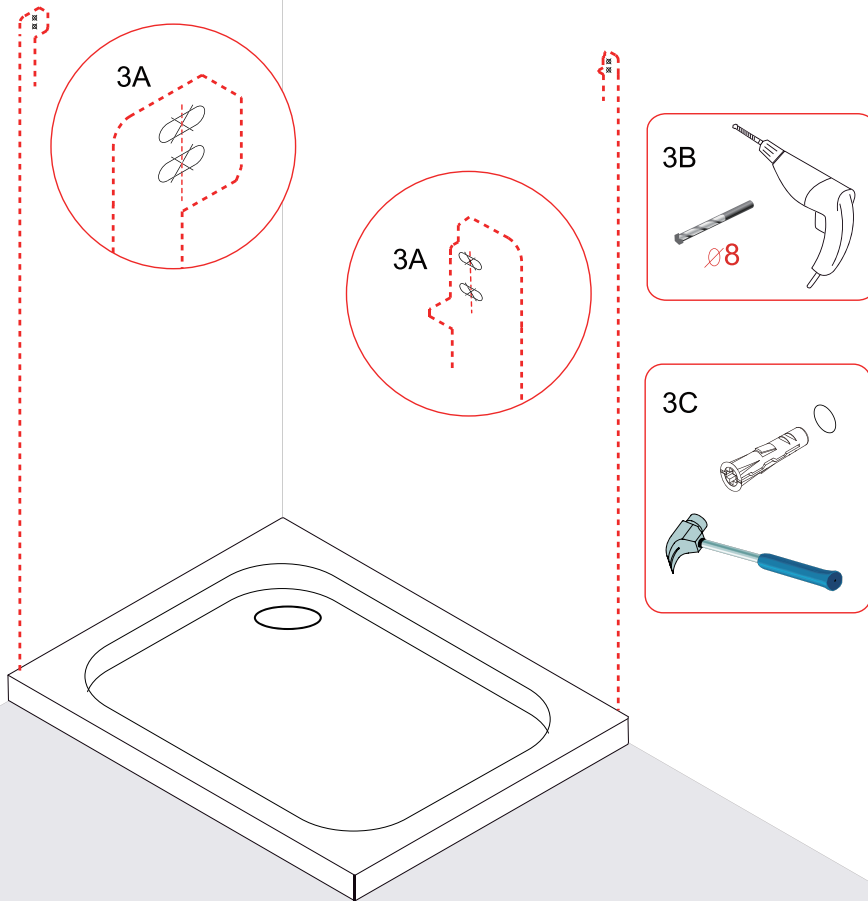
2A Measure distance X and Y from the back wall to the front of the wall profile and ensure it is within the adjustment range of the size chosen.

2B Plumb the wall profiles.

! 2C Make sure the bracket is seat correctly showing no gap between the join of the wall profile.
Make sure the top bracket is level. Mark the wall through the slots in the wall bracket.

Size	X	Y
700	670-685	
760	730-745	
800	770-785	
900	870-885	
1000	970-985	983-998
1025		1008-1023
1050		1033-1048
1075		1058-1073
1100		1083-1098
1125		1108-1123
1150		1133-1148
1175		1158-1173
1200		1183-1198
1400		1383-1398

3

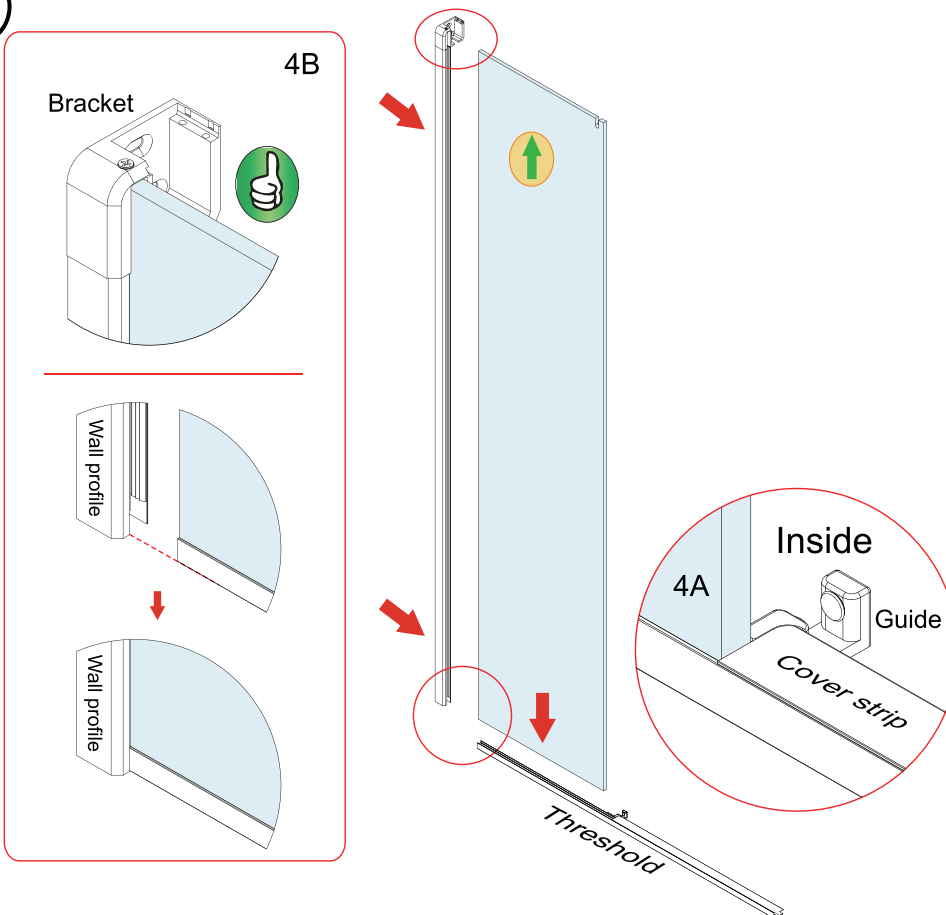


3A Mark the centre of the slot.

3B Drill the centre of the slot. This is important to allow adjustment.

3C Insert the wall plugs.

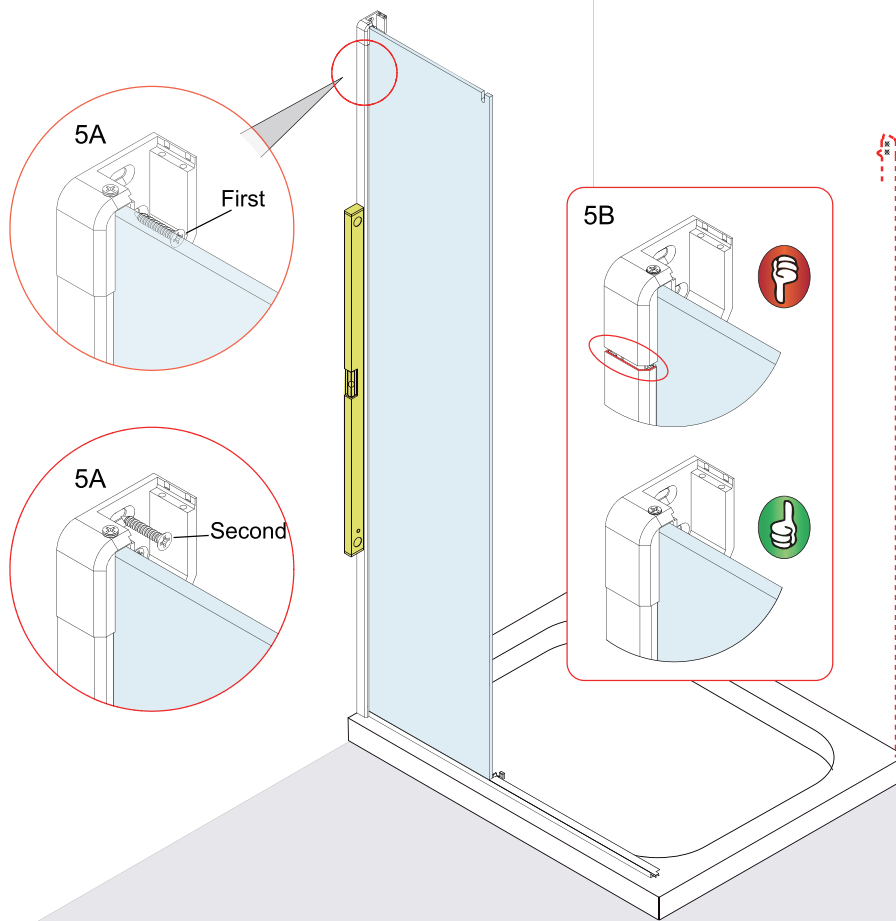
4



4A Fit the fixed panel into the threshold. Make sure the edge of the glass is tight against the end of the cover strip. Make sure the guide is facing inside.

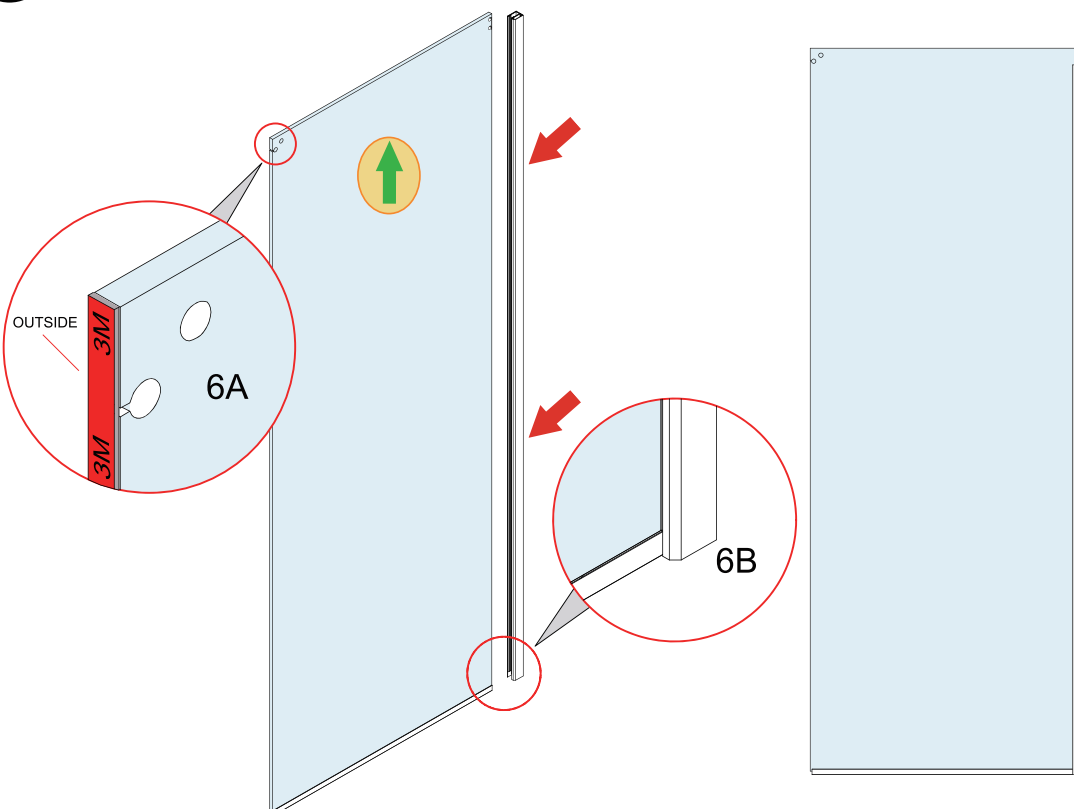
4B Fit the assembled profile and bracket to the fixed panel. Ensure the wall profile is seated fully at the base.

5



5A Check assembly is plumb and fix to the wall through the bottom slot first making sure there is no gap between the join of the profile and the bracket (**5B**) and then secure with second screw.

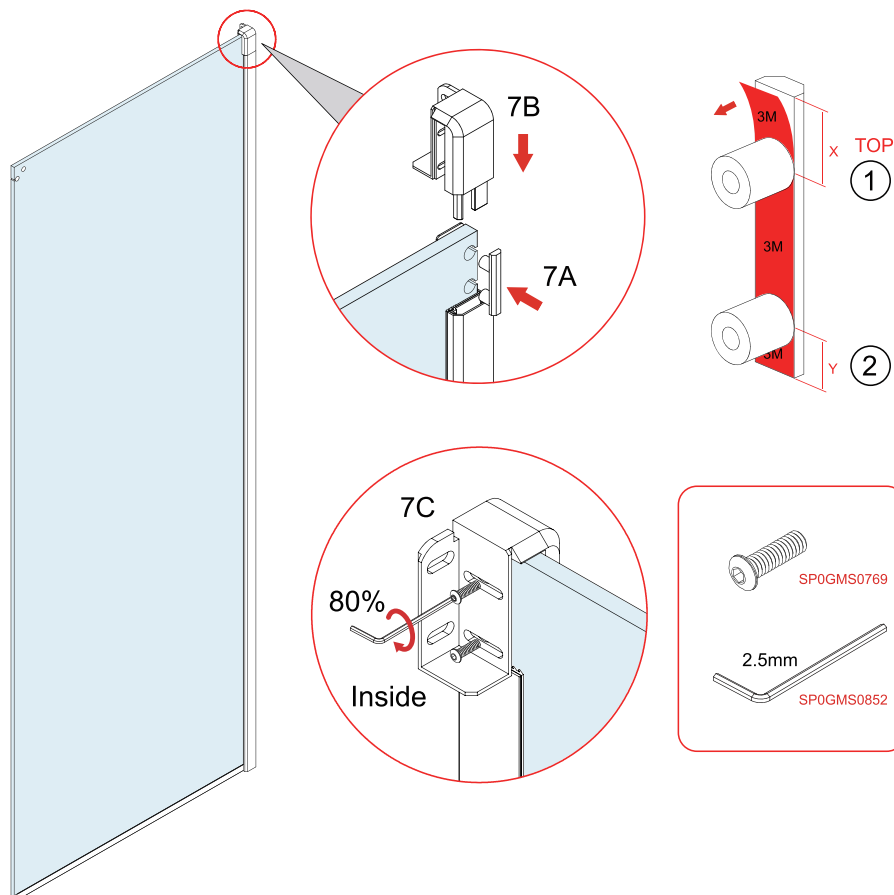
6



6A Note the correct orientation of the glass, arrow facing up.

6B Fit the wall profile fully onto the glass panel keeping the bottom of the profile flush with the bottom of the panel.

7



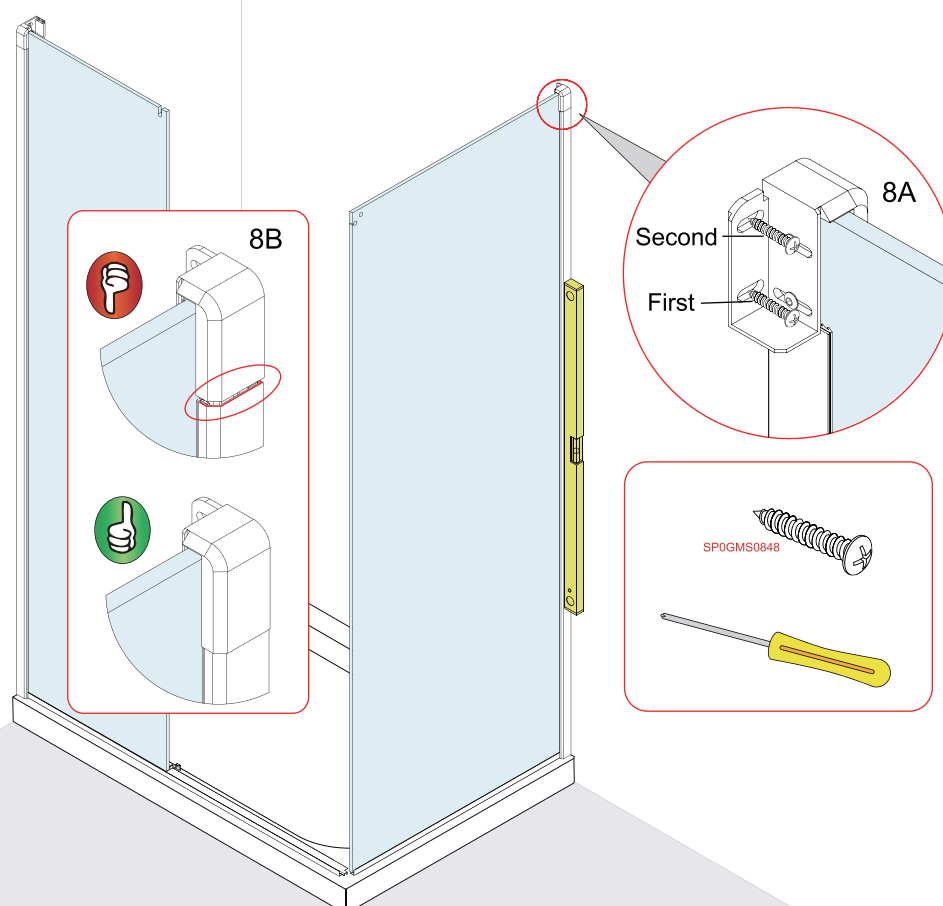
7A 1. On the glass fixing bracket remove the protective film from the tape and keep end with X to the top.

Then fit the fixing bracket to the outside of the glass.

7B Slide the bracket down over the glass fixing.

7C Loosely fix the the glass clamp to the wall bracket with Pan head screws to allow adjustment.

8

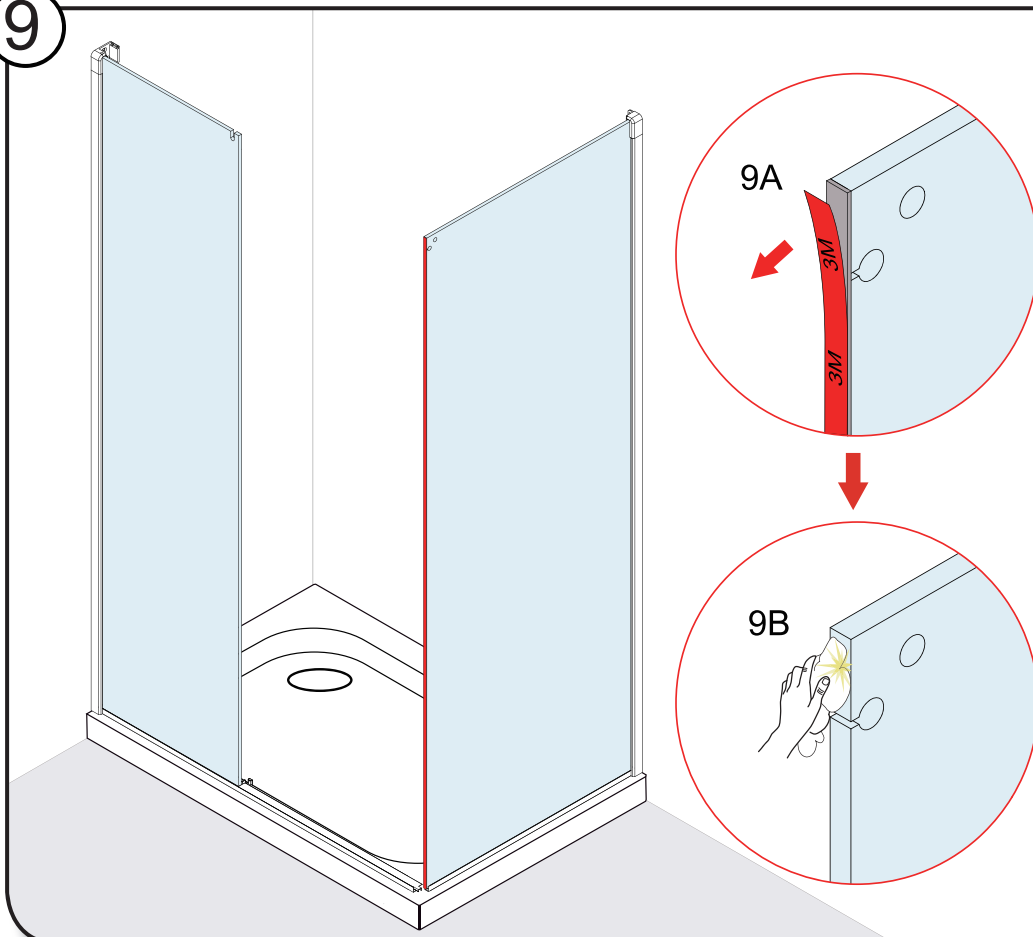


8A Check assembly is plumb and fix to the wall through the bottom slot first making sure there is no gap between the join of the profile and the bracket

(8B) and then secure with second screw.

Warning. Note that the threshold is not to be connected at this stage.

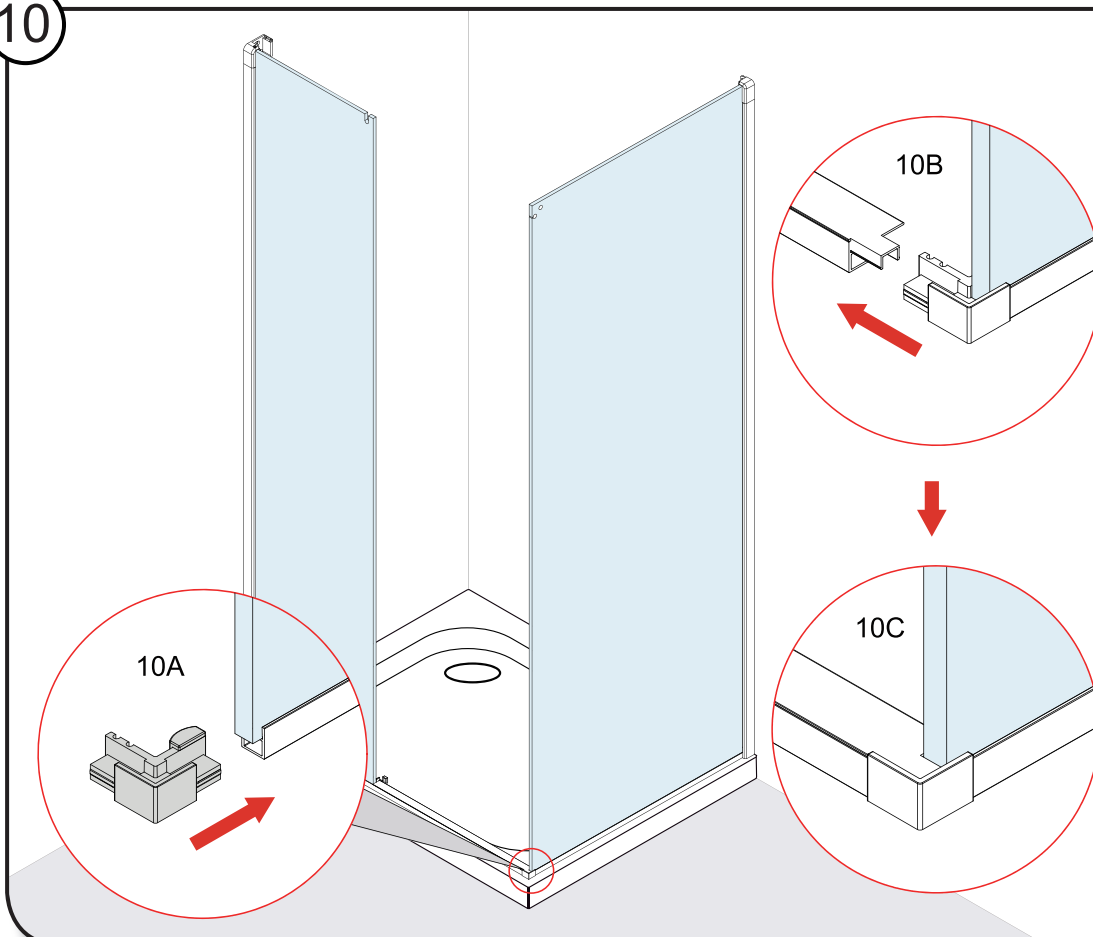
9



9A Starting from the top slowly peel away the adhesive tape (As only used with 3 panel slider) and discard.

9B Using mild detergent wipe away any residue

10

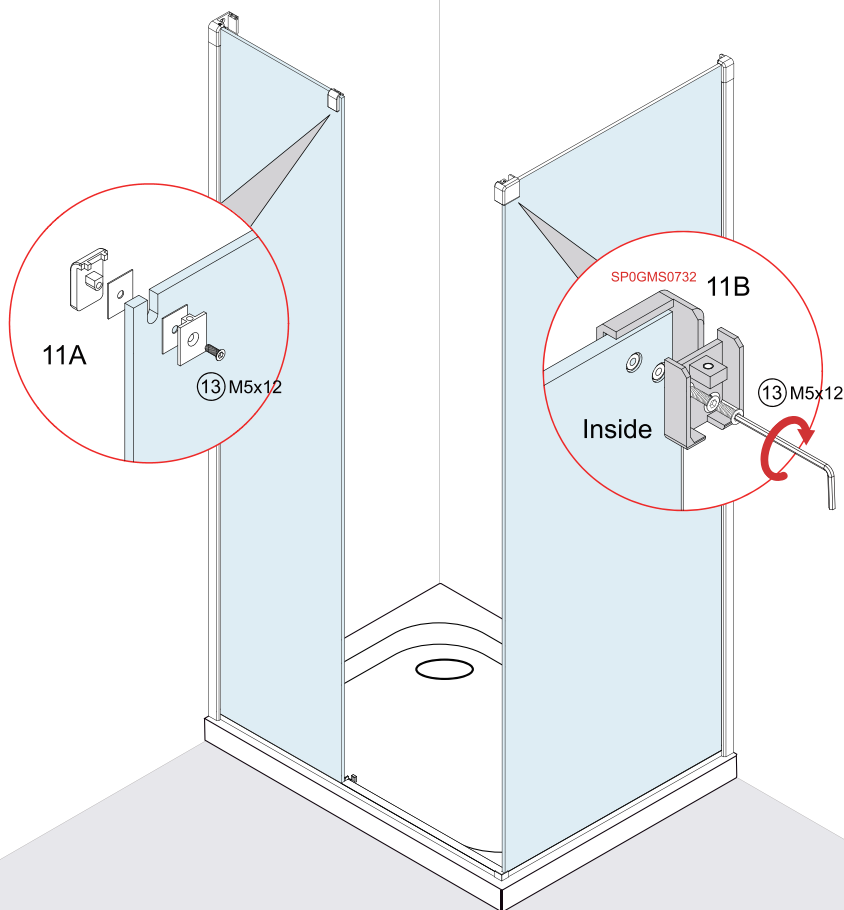


10A Fit corner bracket into the end of the side panel threshold.

10B Guide the corner bracket into the the end of the front threshold.

Note: Make sure the bracket is pushed in fully into each profile and no gaps are showing 10C.

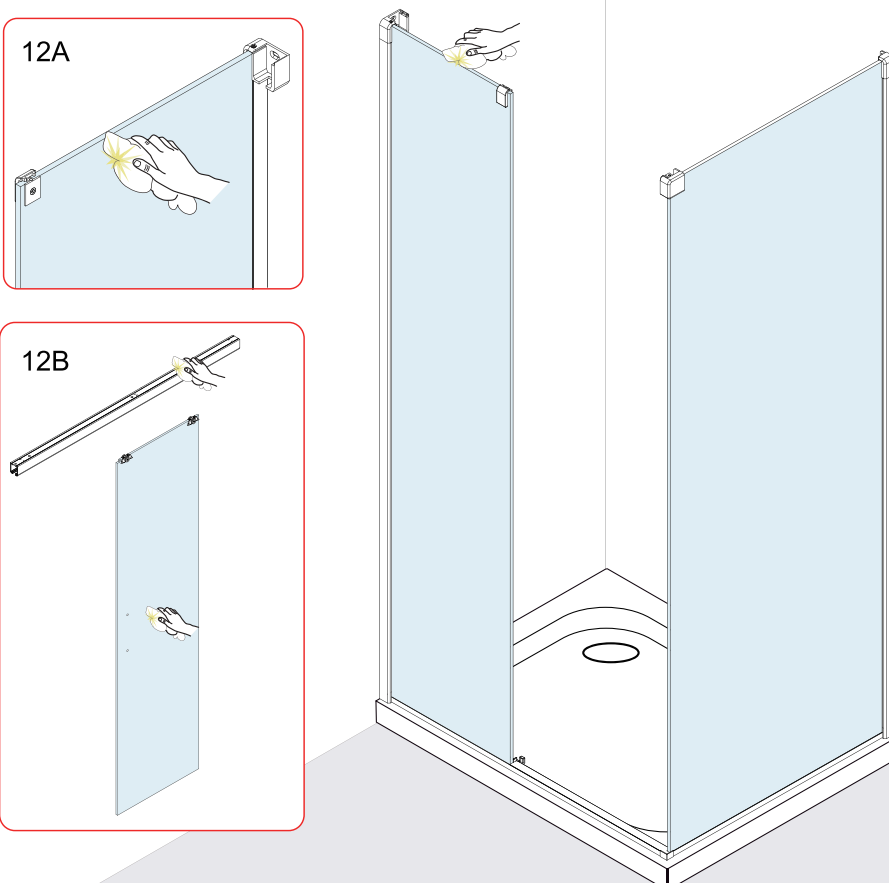
11



11A Fit the middle bracket making sure the bolt is on the inside.

11B Fit the corner bracket to the side panel.

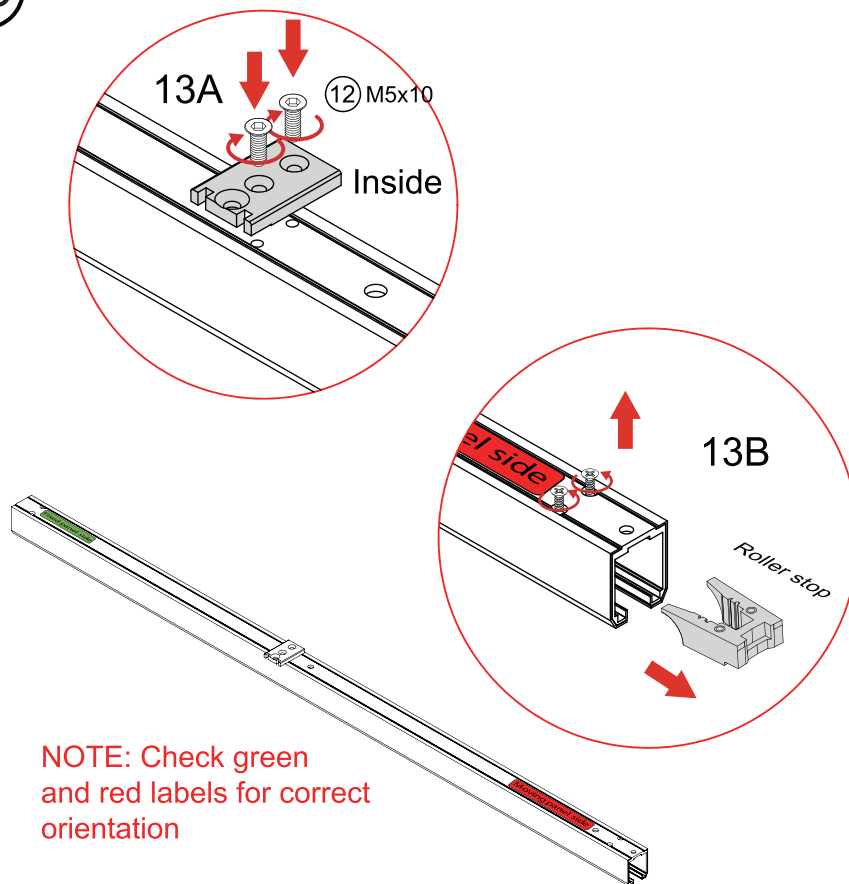
12



12A Using micro fibre cloth provided thoroughly clean the inside of the glass around the area of the top rail.

12B The top rail also needs to be thoroughly cleaned before lifting into position.

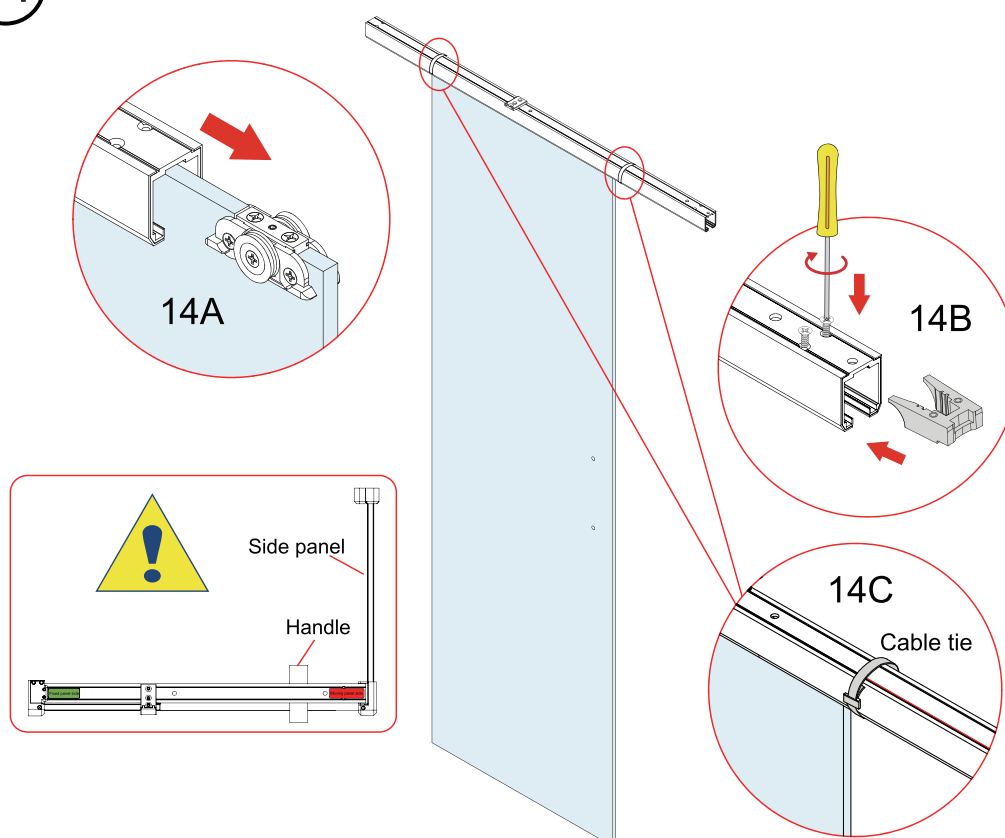
13



13A Note the labels on the ends of the rail.
Fit plate to the top of the rail with notched side facing out.

13B Remove the roller stop from the moving panel side.

14



14A Slide the 'Moving panel' end of the top rail onto the moving panel.

Note : make sure the holes in the glass for the handle are on the 'Moving panel' side.

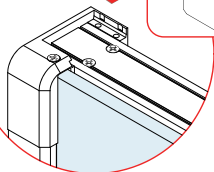
14B Fit the roller stop.

14C Slide the top track to the centre of the glass and secure the rail with the cable ties. This will prevent the rail moving when lifting into place.

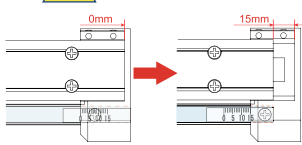
15

Max. adjustment on each side is 15mm. On fixed panel side make sure to adjust the fixed panel in the wall profile at the same time as the top rail.

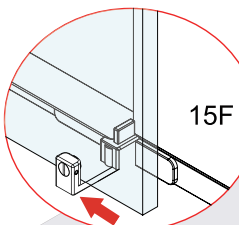
15B



Adjustment 0~15mm

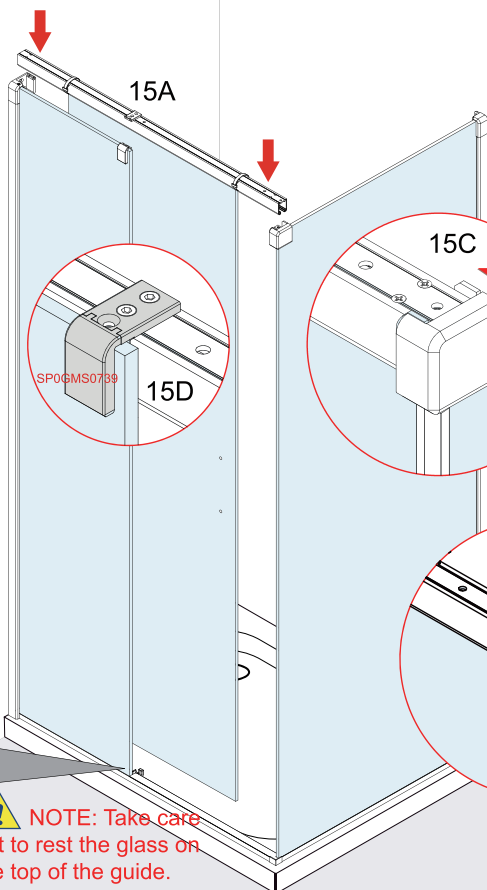


15F

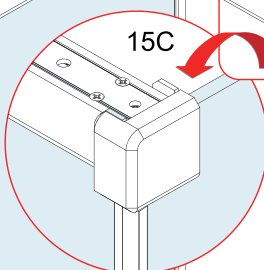


NOTE: Take care not to rest the glass on the top of the guide.

15A

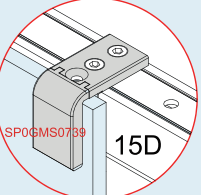


15C

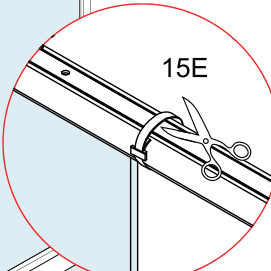


SP06MS0739

15D



15E



15A Lift the moving panel and top rail into the brackets **15B** & **15C**. Make sure both parts of the middle bracket **15D** are aligned to allow the rail to drop into position. Keep the bottom of the moving panel out from the guide.

15E Remove the cable ties.

15F When door is fitted move door to the closed position and slide guide over the back edge of the moving panel.

16

4. Do not over tighten

4

SP06MS0719

2

3

1

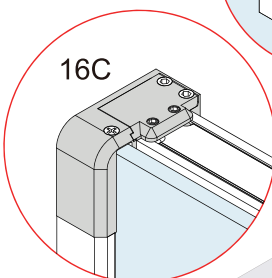
SP06MS0718

16B

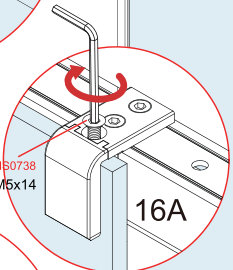
SP06MS0738

14 M5x14

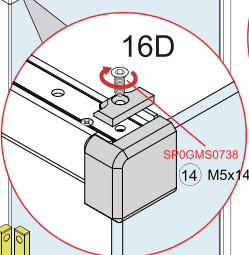
16C



16A



16D

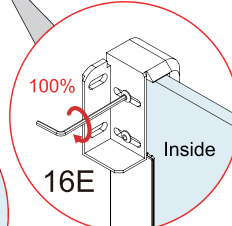


SP06MS0738

14 M5x14

100%

16E



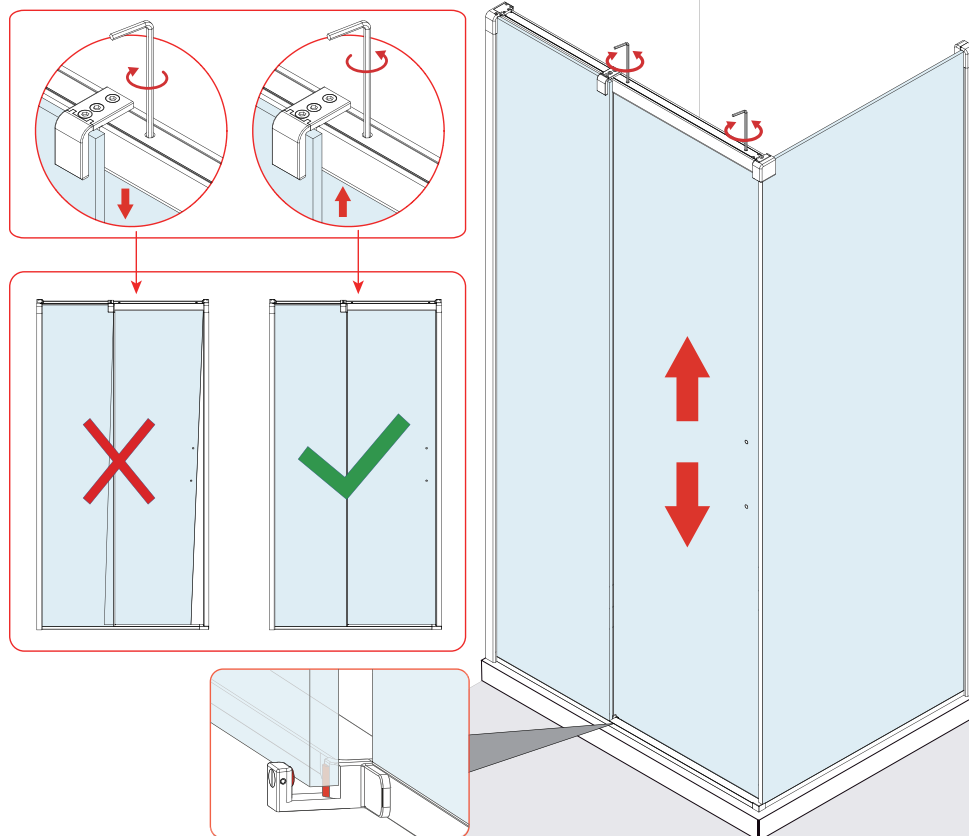
16A Squeeze the fixed panel and rail together to align the bracket and plate and fix with M5 x 14 screw.

16B 1) Slide the fixing plates into the wall bracket. 2) Secure to the bracket with M4 x 10 screws. 3) Lock the rail to the bracket by tightening the grub screws. 4) Loosely fix the plastic grub screw so it is flush with the top of the bracket.

16D Secure the rail in the corner bracket with M5x14 screw.

16E Fully tighten the glass clamping screws.

17 Aligning moving panel / adjusting rollers

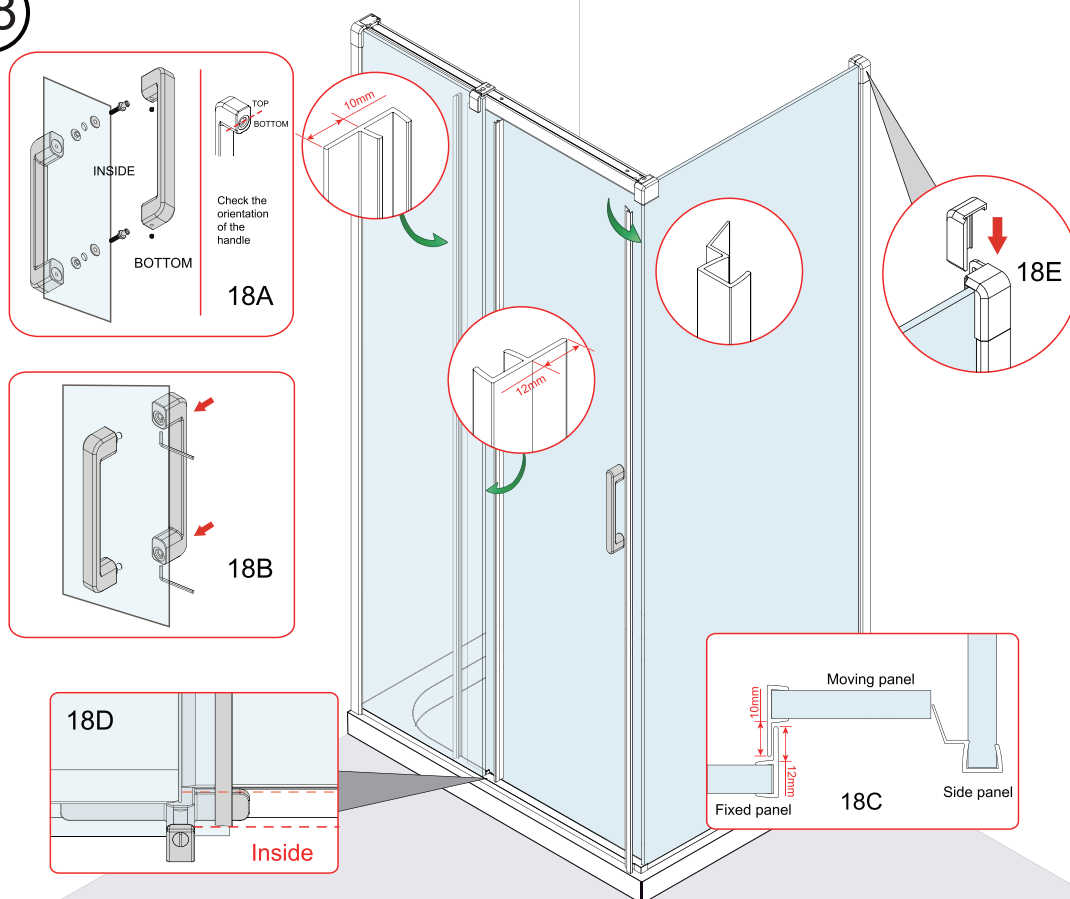


The height and alignment of the door can be adjusted using the hex key provided. The moving panel must be in the closed position to access the adjusting screw through the access ports on the top of the rail. Turn clockwise to lower and anti-clockwise to raise.

The vertical alignment of the moving panel should be adjusted so there is adequate overlap with the fixed panel and the closing post.

Check the glass is touching the plastic inserts of the guide at all times, lower the panel if necessary.

18



18A Note the top and bottom of the handle, disassemble and fit outer handle making sure to place washers on both side of the glass.

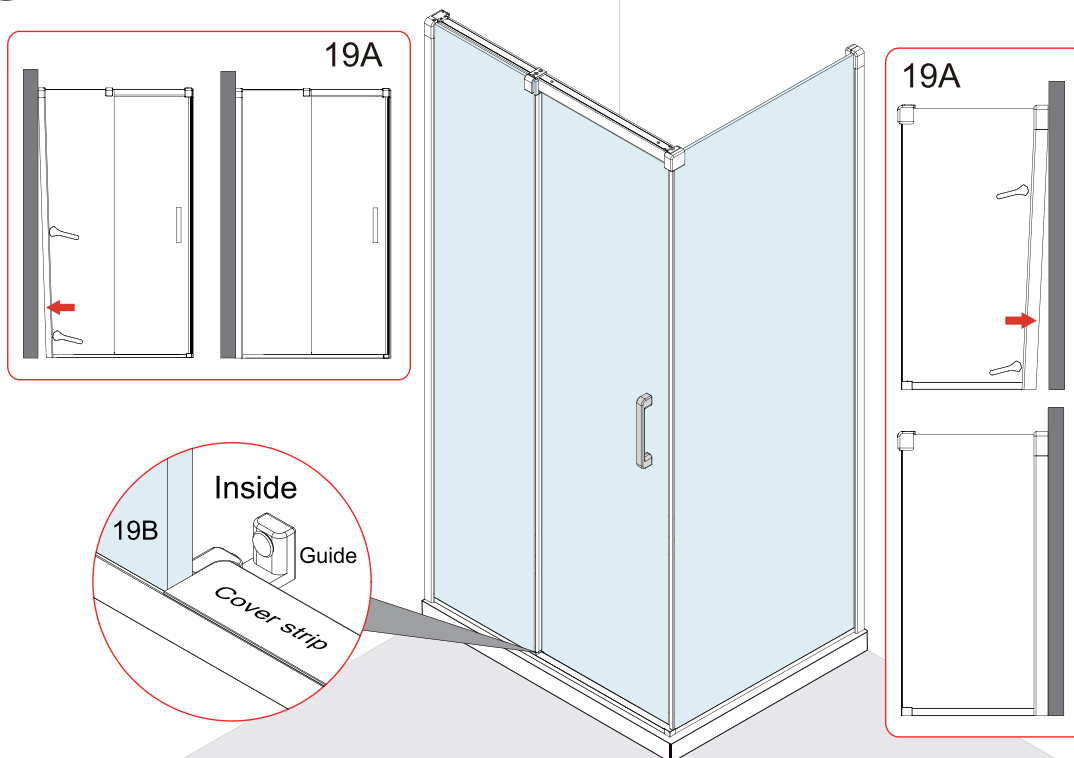
18B When fitting the inner handle make sure the grub screws are to the bottom.

18C Fit upright seals to the edge of the fixed panel and back edge of the moving panel.

18D Fixed panel seal should be tight to the threshold, moving panel seal needs to be above the bottom guide and not touching the top rail.

18E From the top slide the cover cap onto the wall bracket.

19

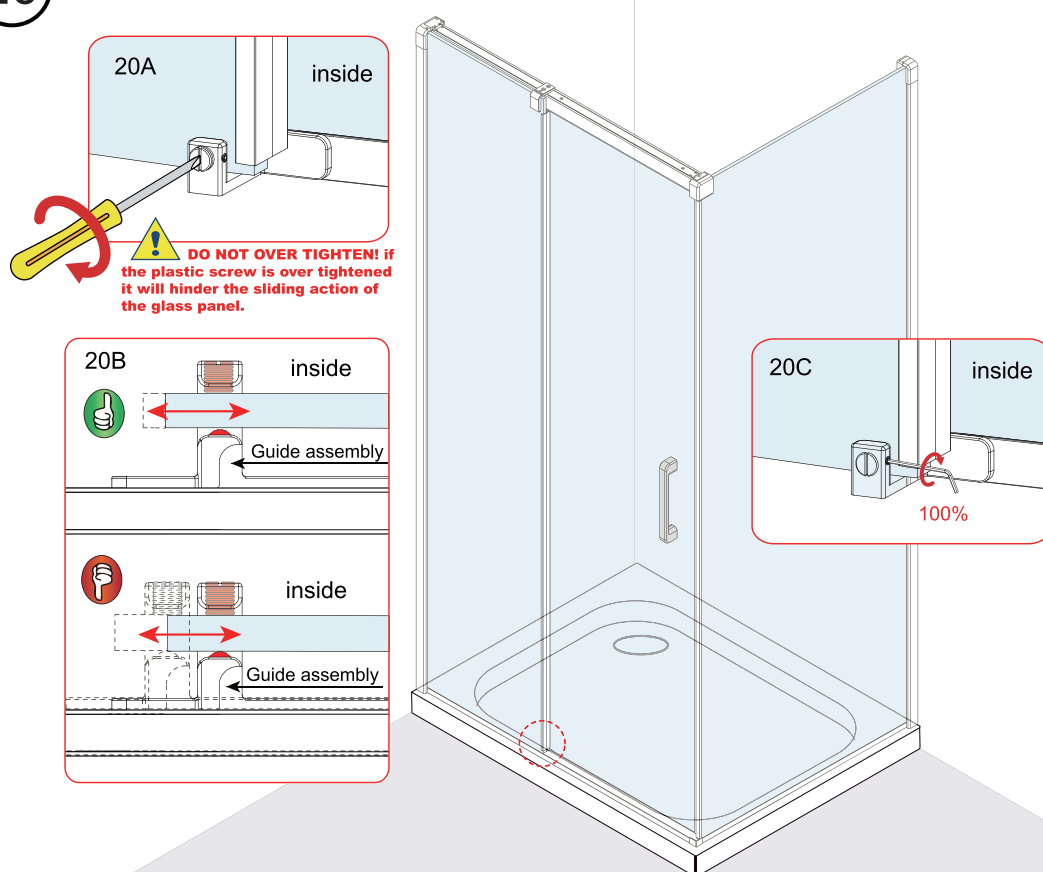


As the fixed glass panel is adjusted in the wall profile gaps will appear between the profile and the wall, especially near the bottom.

19A Use the plastic tool provided to push the profile tight to the wall.

19B Check the fixed panel does not move and remains tight to the threshold cover strip.

20



20A Adjust the plastic screw to gently rest against the glass panel.

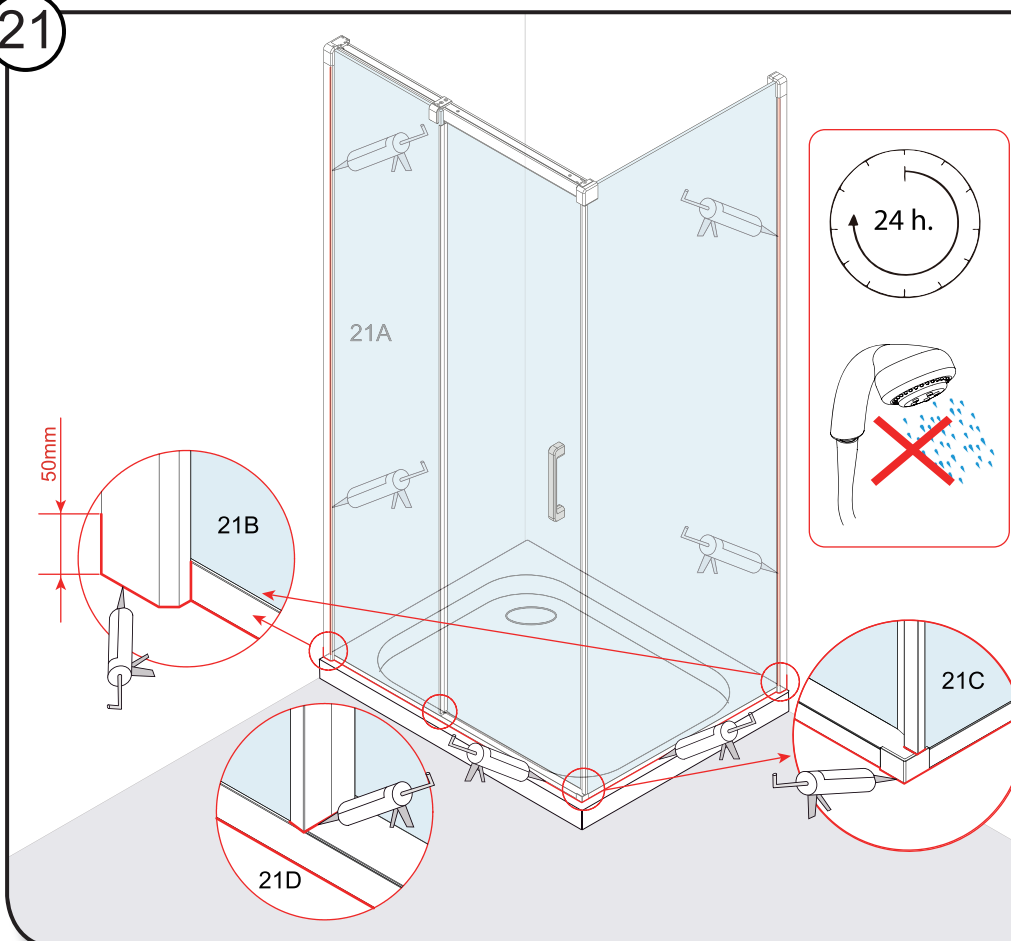
NOTE: This is to prevent rattling of the glass panel within the guide.

20B Open and close the moving glass panel to check that the door is sliding freely and movement within the guide is minimised.

NOTE: Ensure the entire guide assembly does not move with the sliding door as this is an indication that the plastic screw has been over tightened.

20C When satisfied with the plastic screw location, please ensure that the small grub screw is tightened to prevent any movement. This will keep the plastic screw in a fixed position.

21



Before sealing make sure all surfaces are clean, dry and free from any residue such as grout.

Use quality silicone sealant and applicator gun to finish the door.

INSIDE

21A On the inside seal top to bottom between the wall profile and the wall.

OUTSIDE

21B Seal along the bottom between the threshold and the tray. Seal 50mm vertically between the wall and the wall profile, and between the threshold and the wall profile.

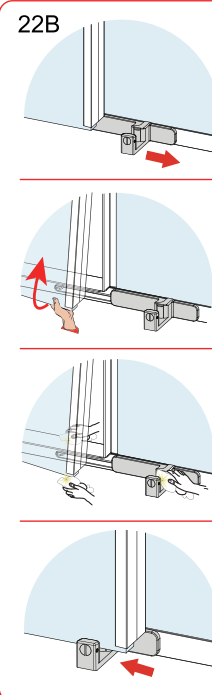
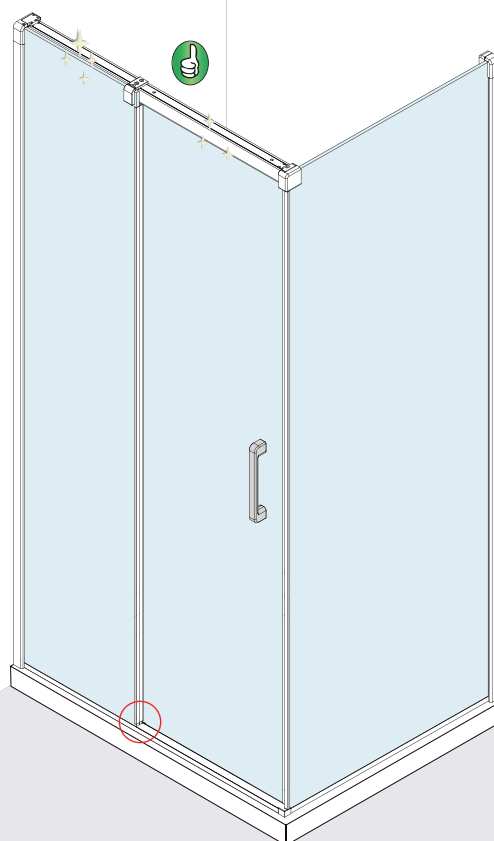
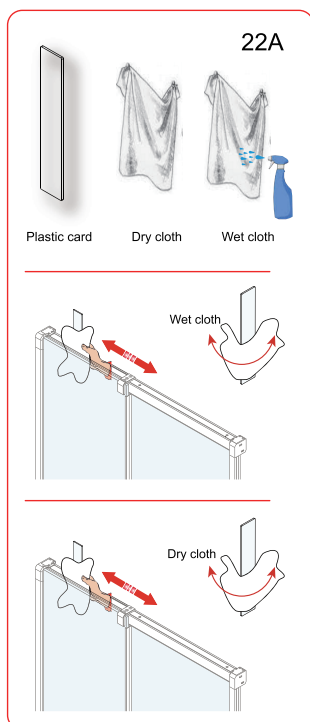
21C Seal the all joints between the foot plates and threshold.

21D Seal between the bottom of the fixed panel seal and the cover strip.

Do not use the enclosure for 24 hours.

22

Care And Maintenance Guide



22A For cleaning the area between the top rail and the fixed glass panel use the micro fibre cloths and card provided. Using a mild detergent dampen one of the cloths and wrap it around the plastic card provided and push between the rail and the glass. Slide the cloth over and back until clean and repeat the process with the dry cloth to shine rail and glass.

22B The moving panel can be released from the bottom guide for ease of cleaning. From inside the enclosure slide the bottom guide away from the moving panel and pull the bottom of the panel towards you. Clean the area around the base of the shower, **Note:** make sure to put the moving panel back into the bottom guide when finished.

MERLYN

Merlyn Showering
Unit 8, Purcellsinch Industrial Park,
Dublin Road, Kilkenny, Ireland.
Tel: 00353 56 779 1555
Fax: 00353 56 779 1576
www.merlynshowering.com

To download the Declaration of Performance (DOP) for this product please use the link below.

<https://merlynshowering.com/aftersales-support/dop-certs/>