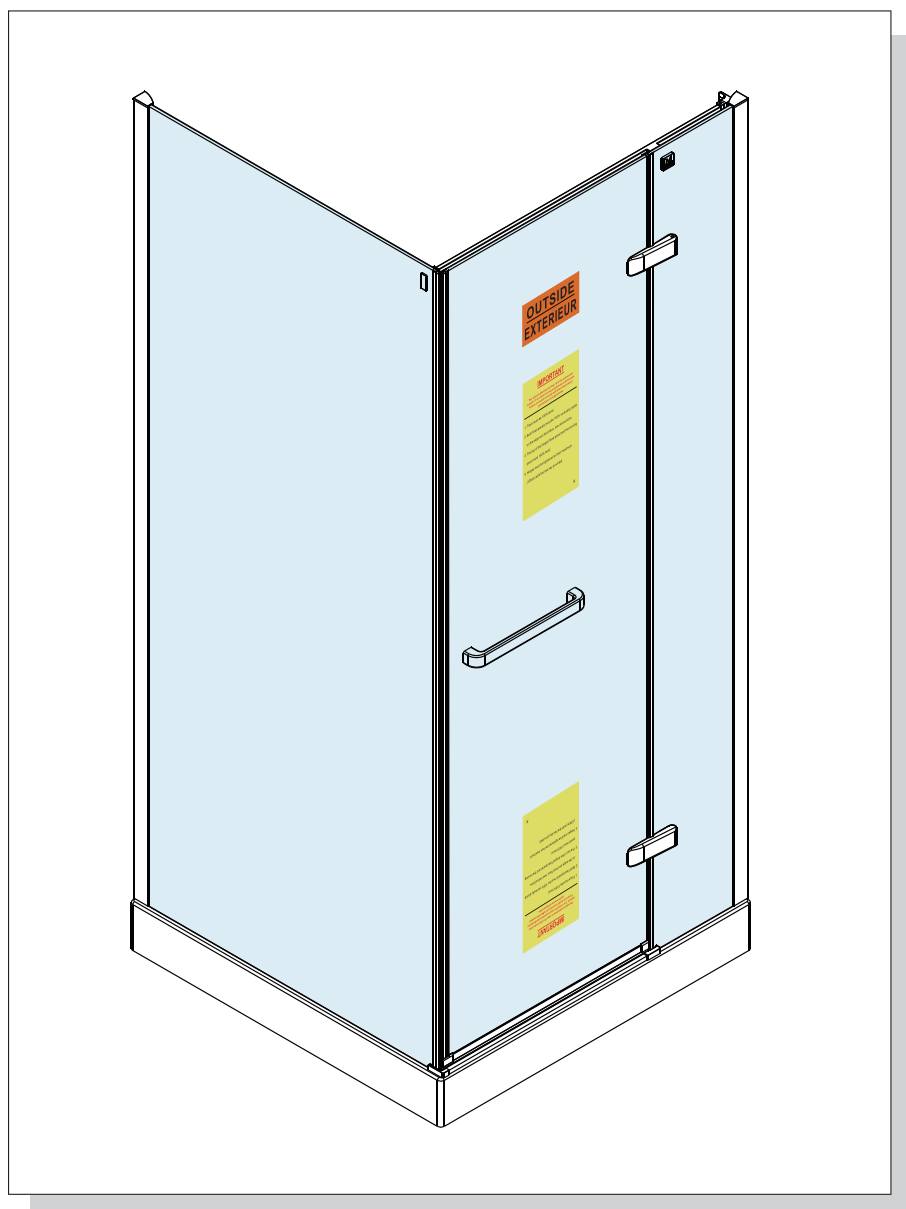


HINGE DOOR & INLINE PANEL & SIDE PANEL



INSTALLATION GUIDE

IMPORTANT:

**Please read the complete instructions
before commencing fitting.**

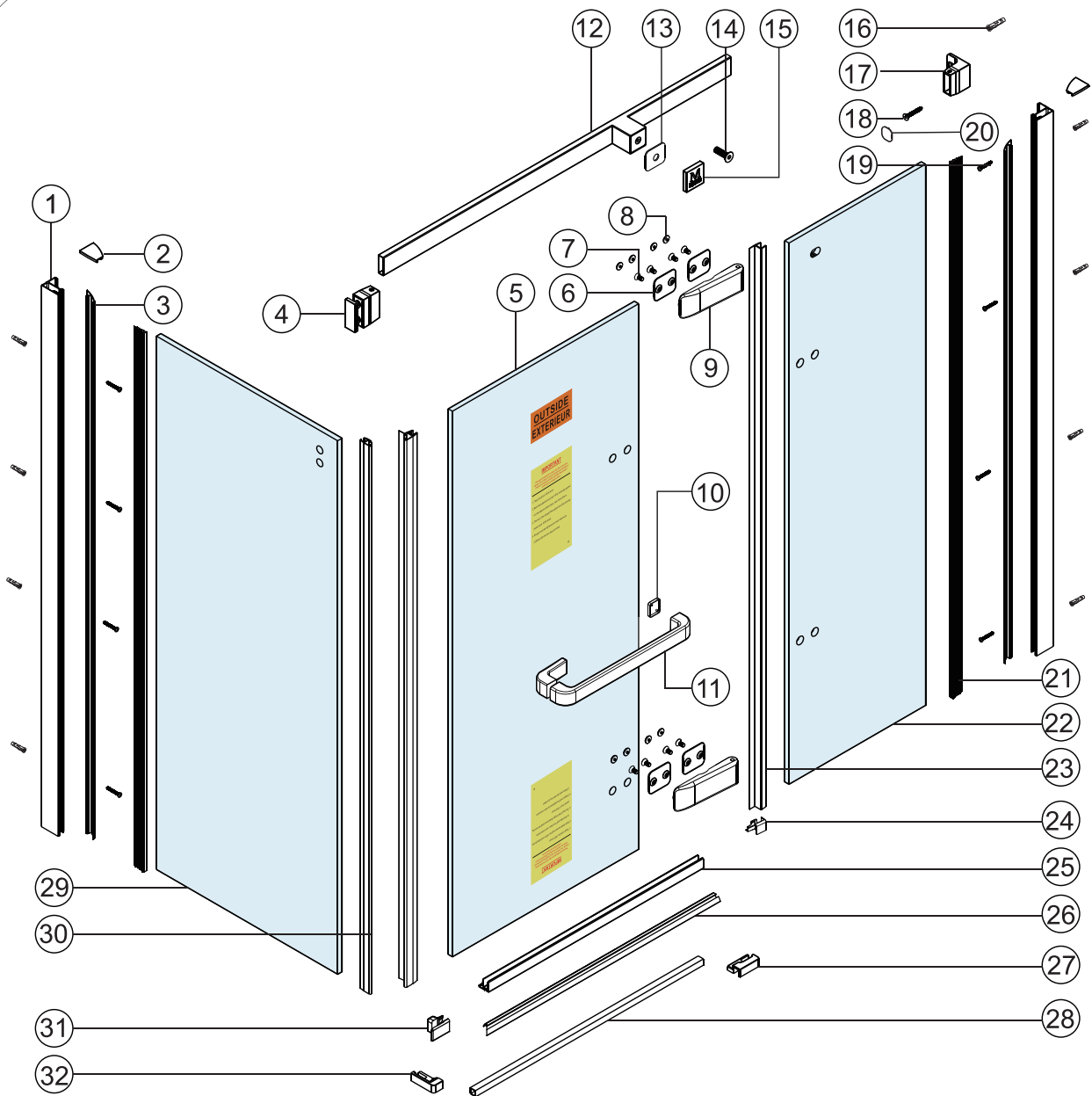
Make sure the tray is 100% level in all directions.
Do Not attempt to install the product unless you
can tick all 4 boxes satisfactorily.

- **Check that you have the tools required**
- **Check the installation site is compatible with
the sizes of door supplied**
- **Check all the enclosure components are present**
- **Check the installation kit is complete**

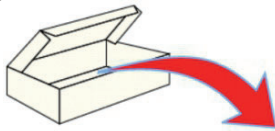
The wall plugs supplied with the installation kit are
for use in solid walls. Hollow or 'stud partition'
walls will require alternative fixings. Please consult
a hardware supplier for the correct type.

It may also be necessary to consult your tiling
supplier about the correct method for drilling your
tiles.

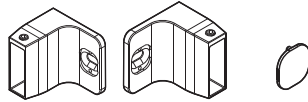
**ATTENTION: TAKE EXTREME CARE WHEN
HANDLING GLASS, WEAR PROTECTIVE EYEWEAR
AND CLOTHING. DO NOT LEAVE THE GLASS ON
HARD SURFACES AND AVOID CONTACT BETWEEN
THE GLASS EDGES AND HARD SURFACES OR
IMPACTS DURING THE INSTALLATION.**



No.	Qty	Part No.	No.	Qty	Part No.	No.	Qty	Part No.
①	2	A06S0058	⑬	1	A06S0020	⑲	1	A06S0002
②	2	A06S0060	⑭	1	A06S0021	⑳	1	A06S0042
③	2	A01S0115	⑮	1	A06S0081	㉑	1	A06S0036L/R
④	1	A06S0033	⑯	9	8SSJ066	㉒	1	A06S0004
⑤	1	A	⑰	1	A06S0030/A06S0031	㉓	1	D
⑥	8	A06S0011	⑱	1	A06S0048	㉔	1	A06S0044
⑦	8	A06S0013	⑳	8	A06S0049	㉕	1	A06S0037L/R
⑧	8	A06S0012	㉑	1	A06S0032	㉖	1	A06S0035 L/R
⑨	2	A06S0009	㉒	2	A01S0154			
⑩	1	A06S0016	㉓	1	C			
⑪	1	A06S0014	㉔	1	A06S0041			
⑫	1	B	㉕	1	A06S0038			



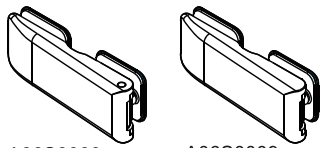
A06S0060 L/R
×2



A06S0030 ×1 A06S0031 ×1 A06S0032 ×2



A06S0067 ×2 A06S0039 ×2 A06S0062 ×2 A06S0063 ×2



A06S0009 ×1 A06S0009 ×1



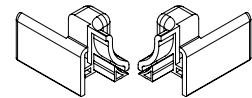
A06S0081 ×1



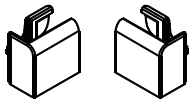
A06S0021 ×1



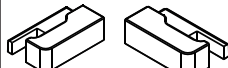
A06S0020 ×1



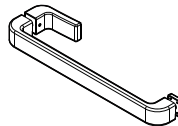
A06S0037 L/R
×1



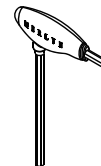
A06S0038 L/R
×1



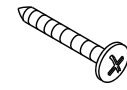
A06S0036 L/R
×1



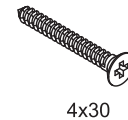
A06S0014
×1



4mm
A06S0046
×1



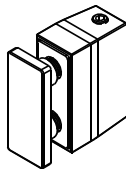
4x30
A06S0049
×8



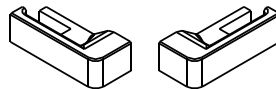
4x30
A06S0048
×2



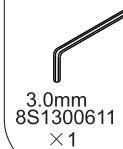
8SSJ066
×10



A06S0033
×1



A01S0035 L/R
×1



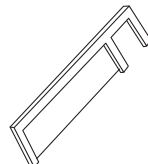
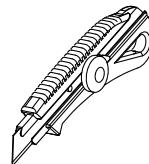
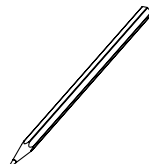
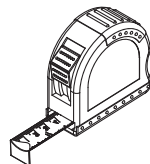
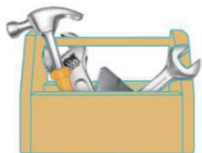
3.0mm
8S1300611
×1



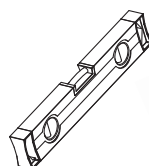
2.5mm
8S1300511
×1



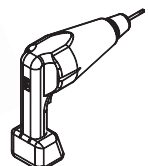
A09S0052
×1

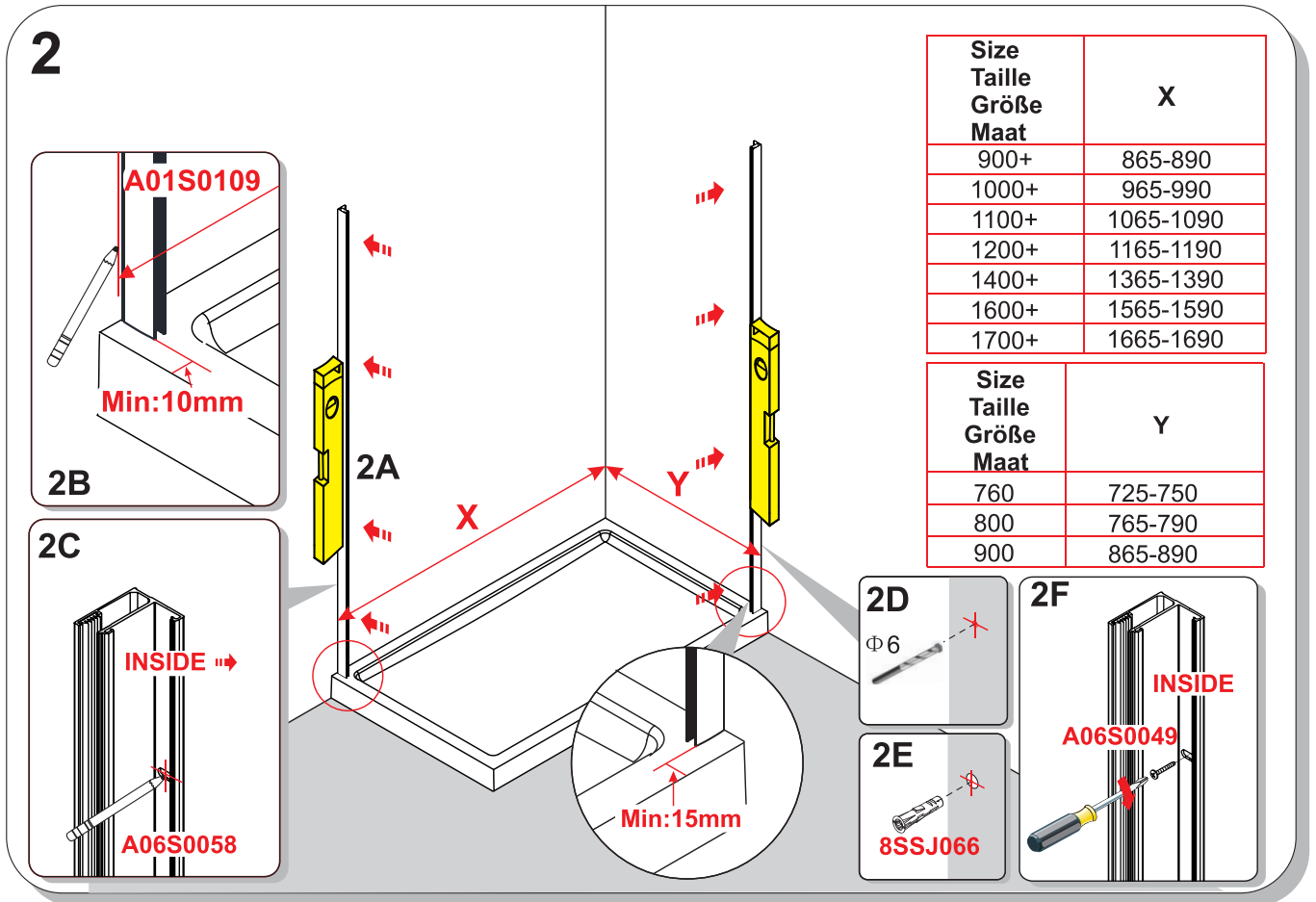
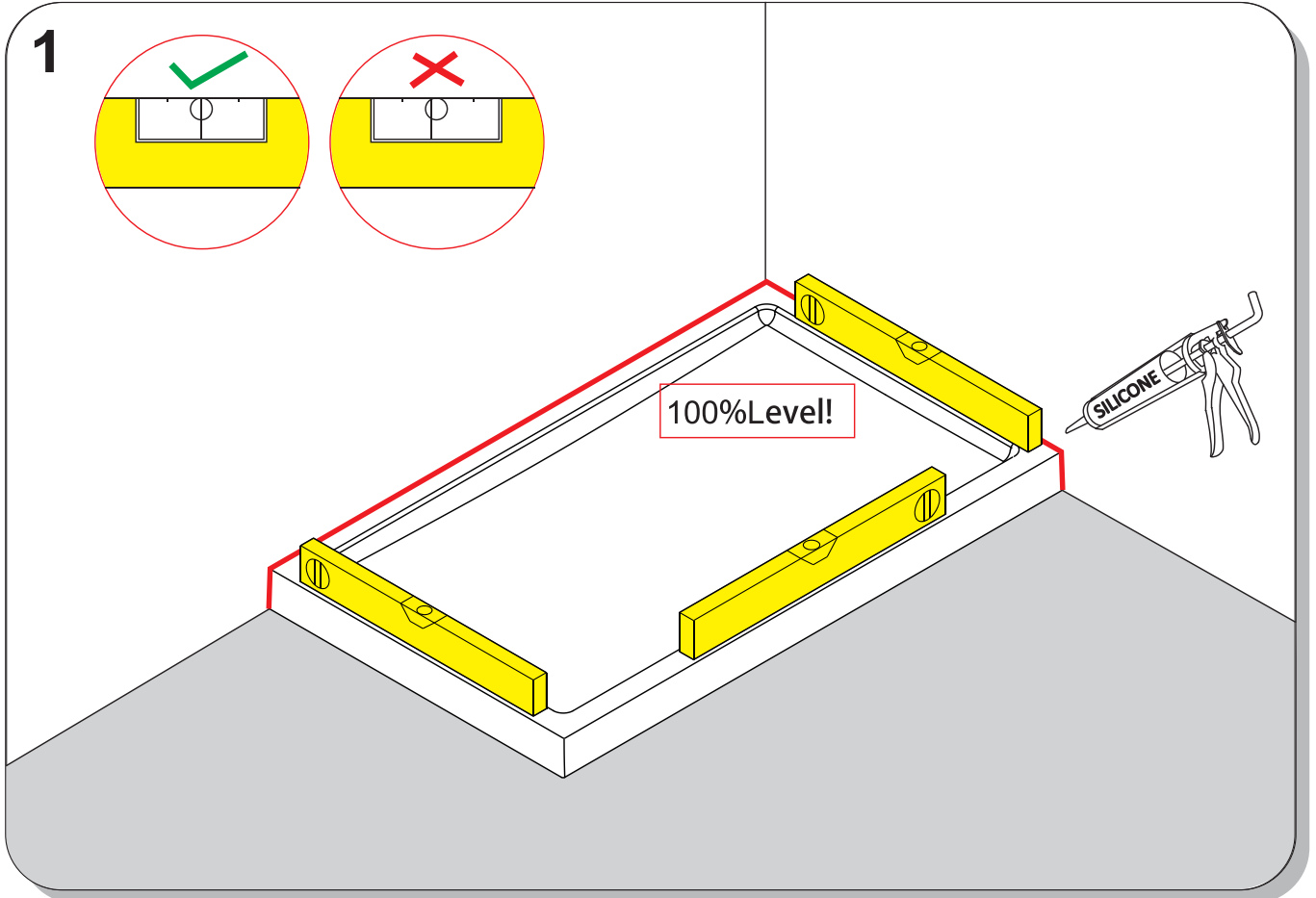


PH2

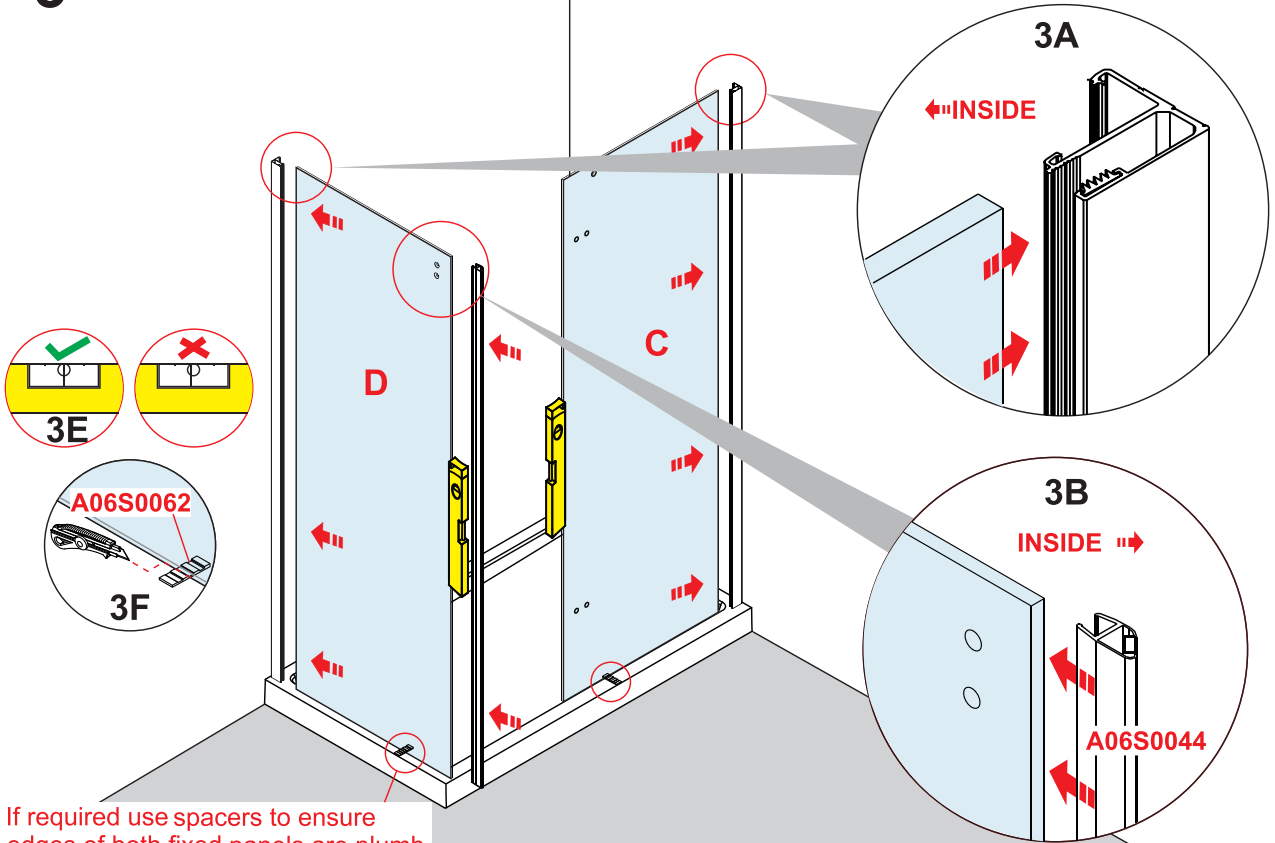


Φ6

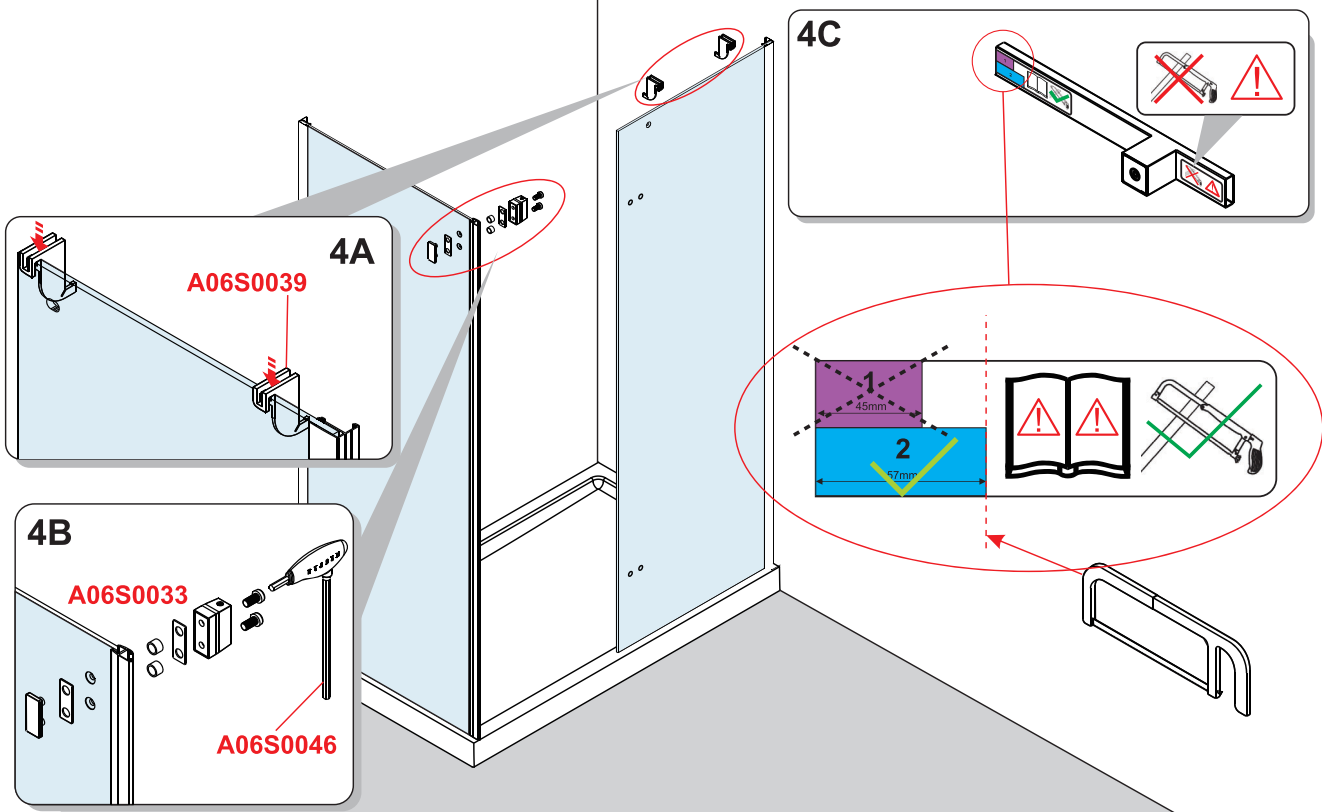


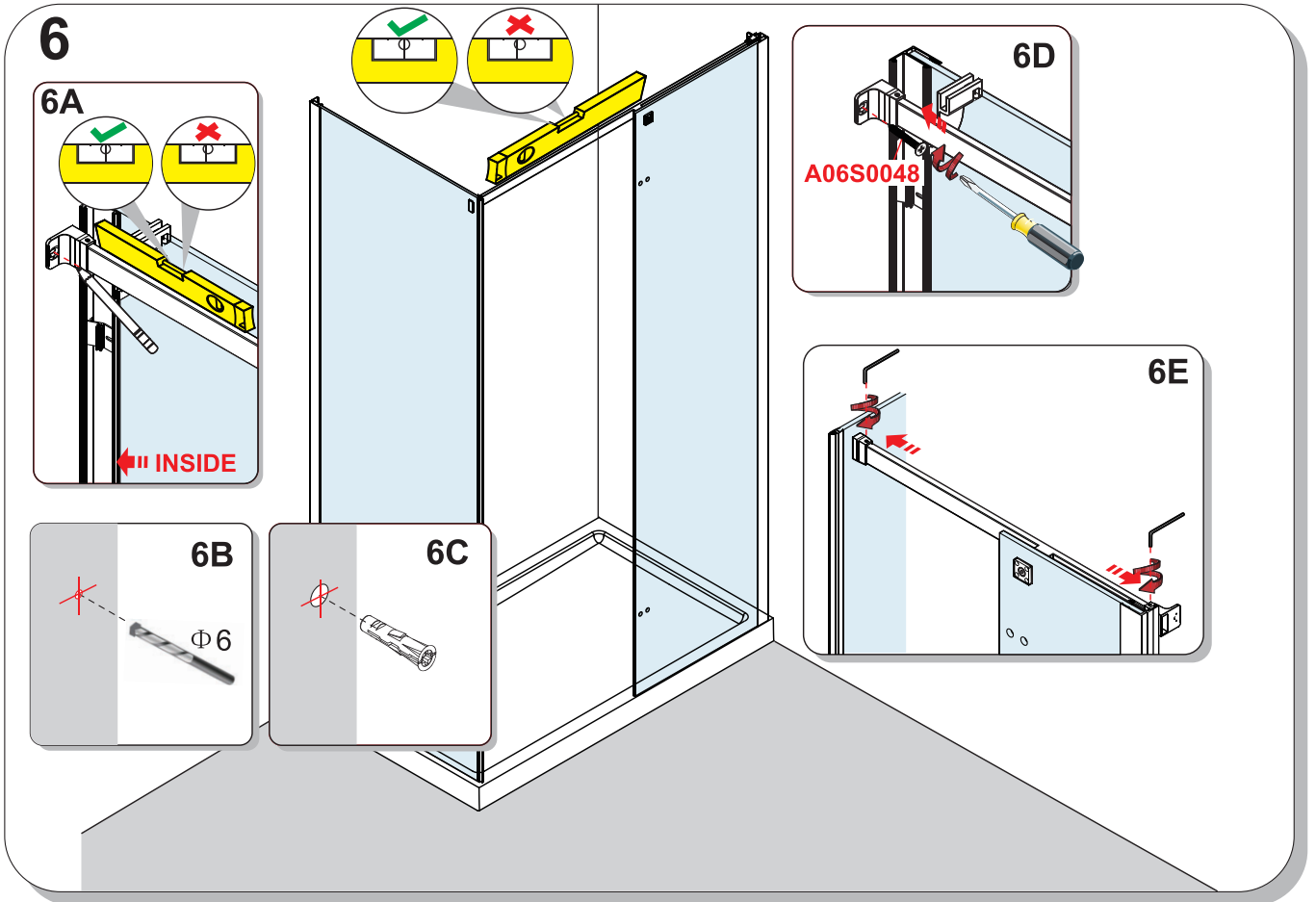
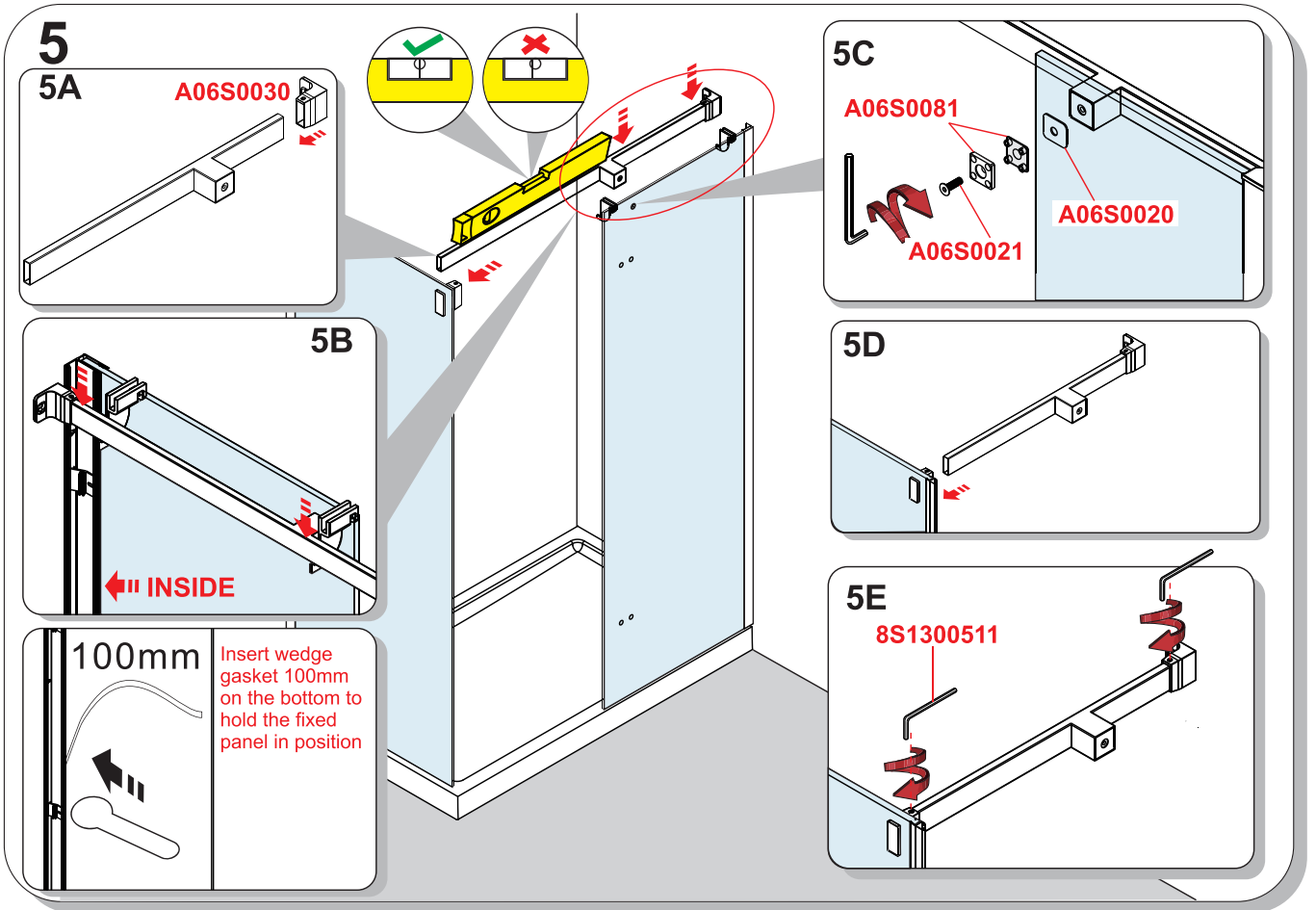


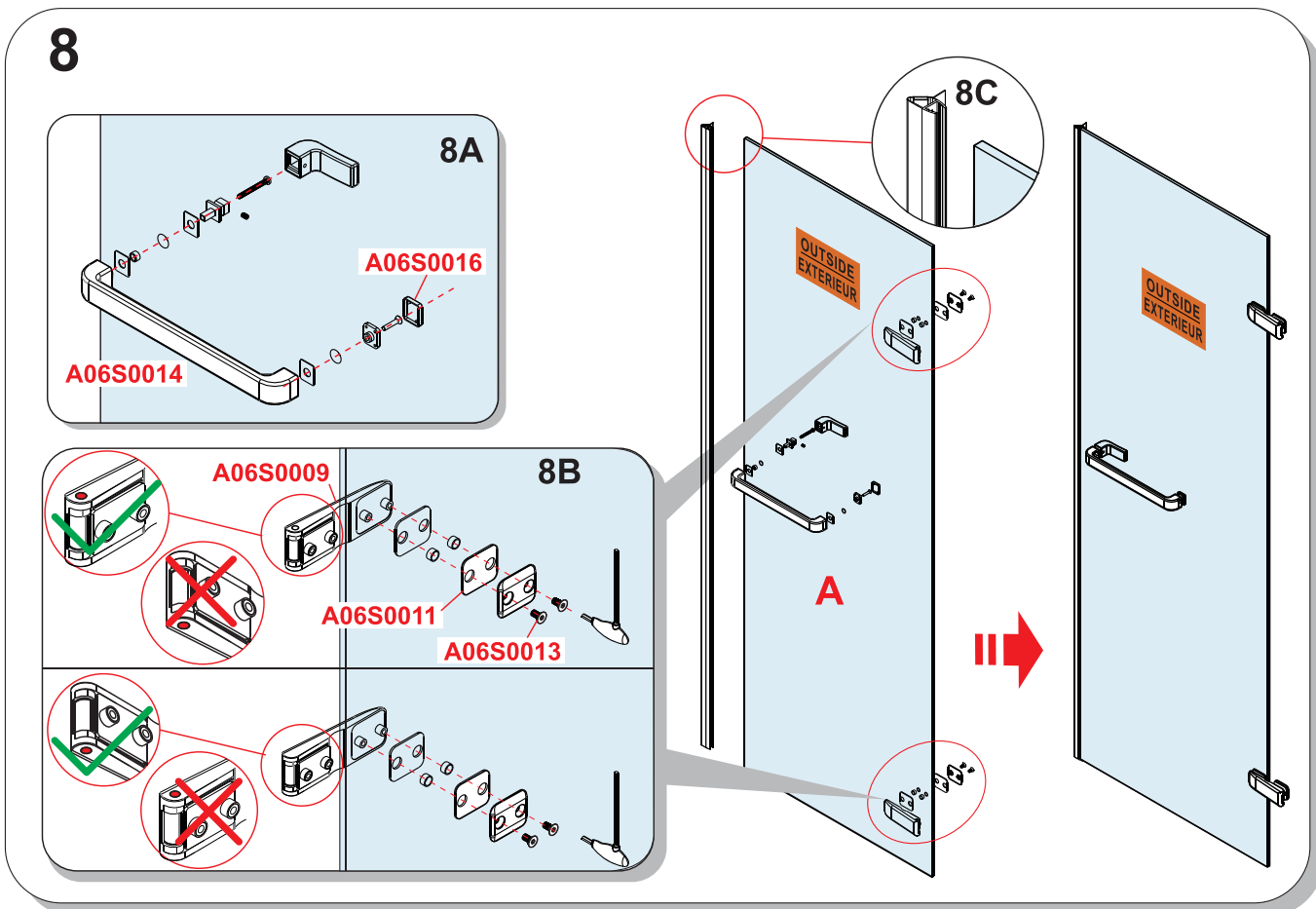
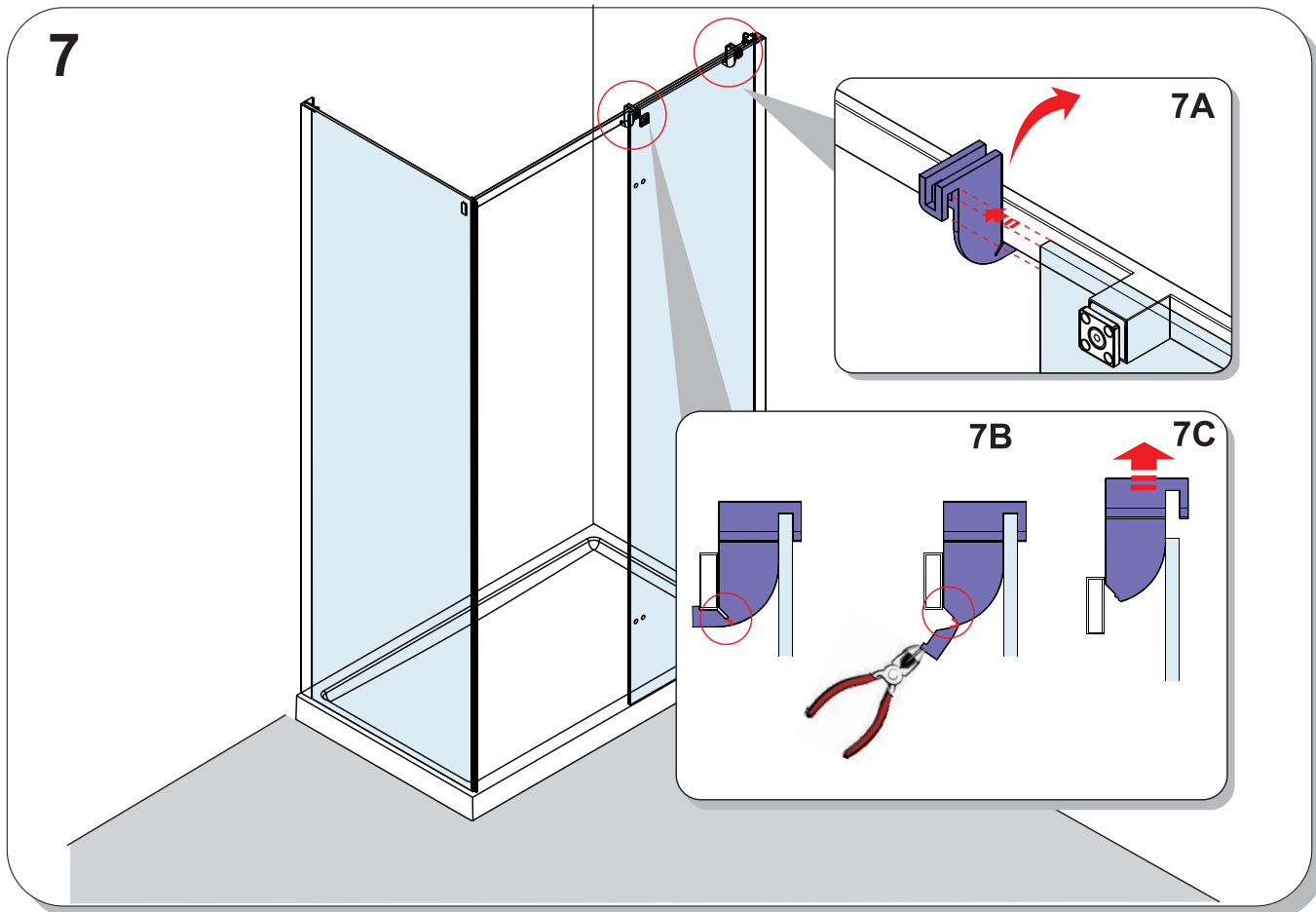
3



4







9

A06S0063

9A

9B

A06S0067

9C

Place all parts and tools required for step 10 inside the enclosure before proceeding.

10

Moving panel is fitted from the inside of the enclosure. Make sure to have all tools and parts required inside the enclosure.

10D

INSIDE ⇨

10E

10 minutes

Wait 10 minutes then tighten all bolts a 2nd time. It is necessary to do this as the hinge gasket will compress slightly after the 1st tightening.

10F

A06S0032

INSIDE ⇨

10A

INSIDE ⇨

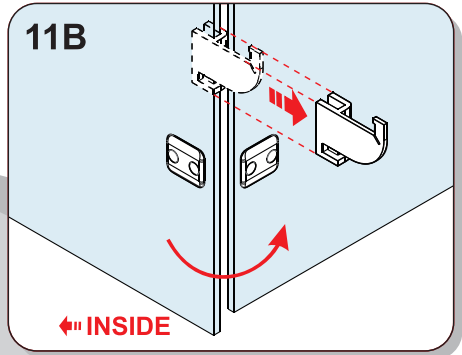
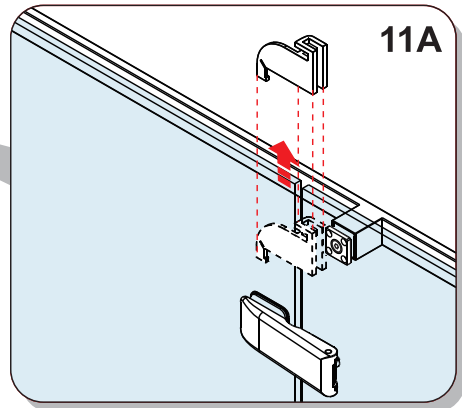
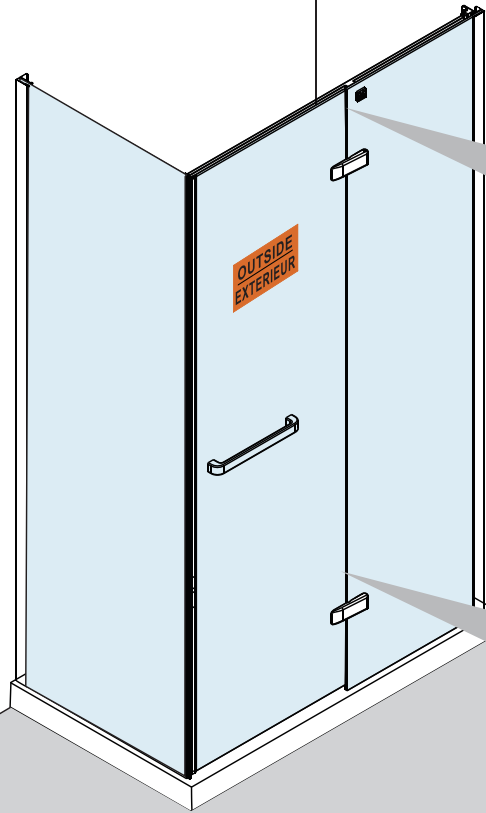
10B

10C

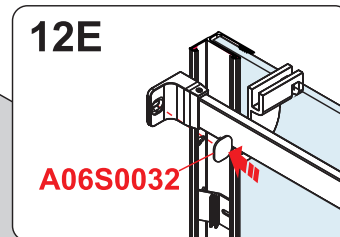
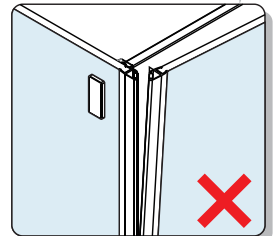
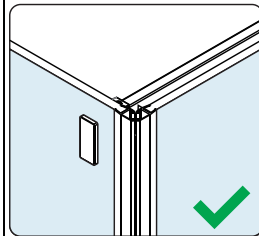
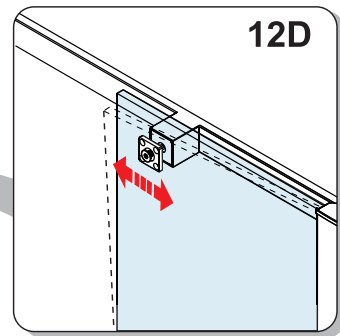
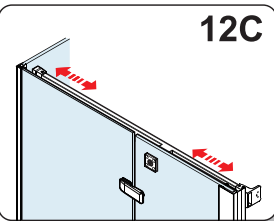
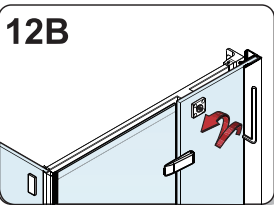
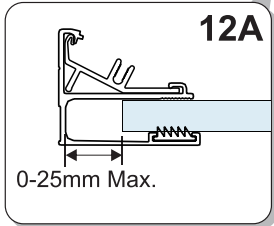
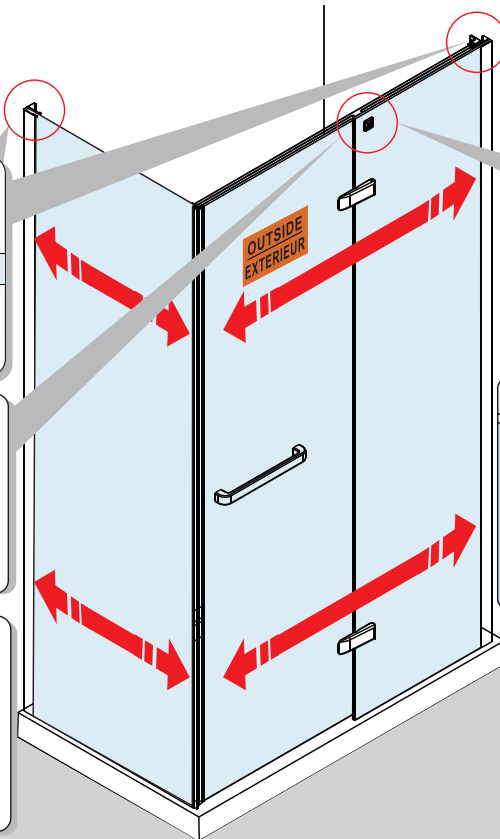
INSIDE ⇨

10C: Using only the Hex key provided fully tighten all hinge bolts to their absolute limit. Anything less than this could cause the door to drop over time. Note: Screws need to be tightened to the Max and its normal to hear a 'clicking' noise.

11



12



If necessary loosen all screws and make final adjustments to align both magnet seals. When seals are aligned fully tighten all screws and fit bracket cover caps.

13

13C

INSIDE

↓

13D

INSIDE

A09S0052

13A

A01S0154

13B

INSIDE →

14

14F

SILICONE

14G

14H

24 h.

14A

LEFT

RIGHT

14B

A06S0002

A06S0042

INSIDE →

14C

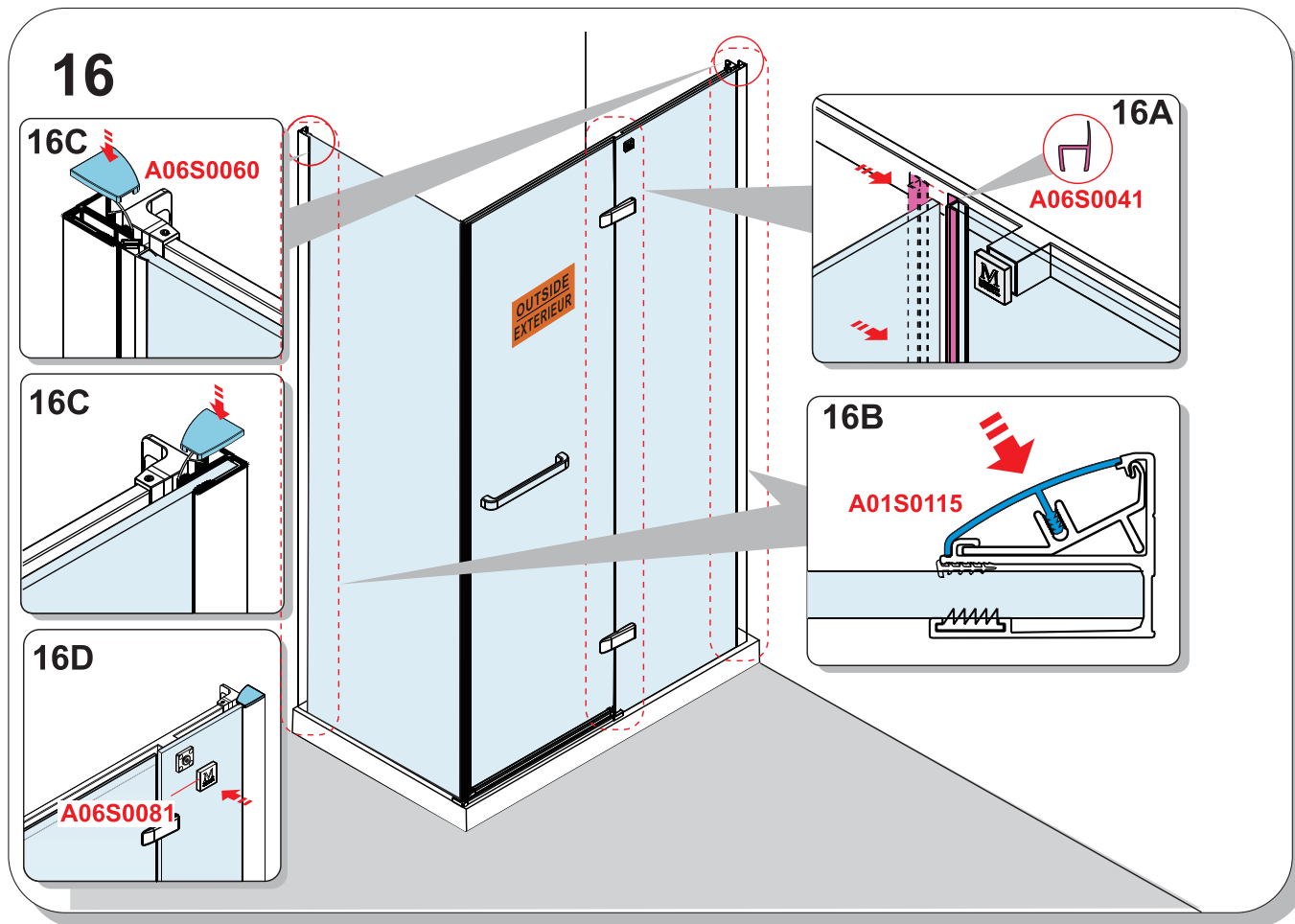
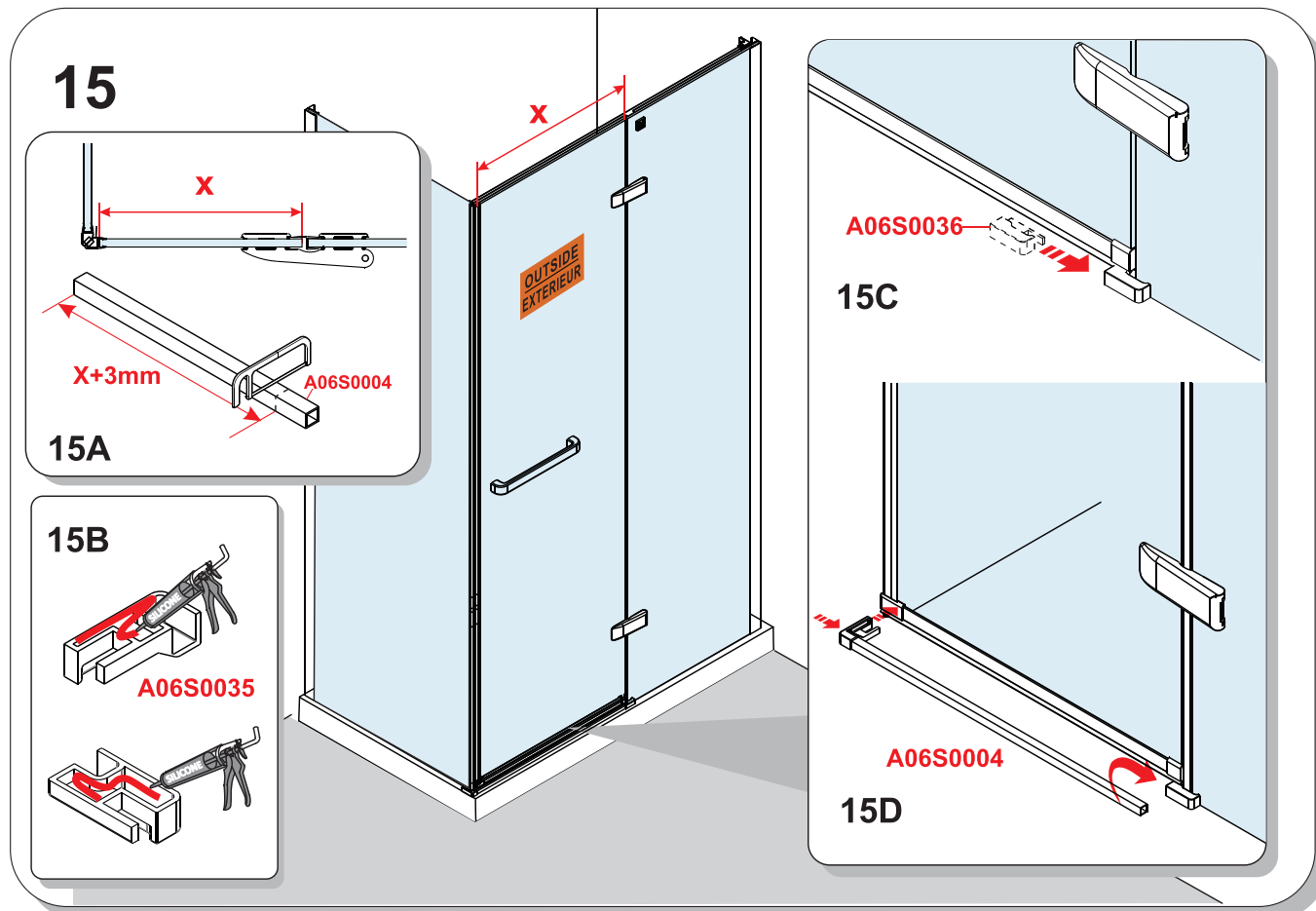
25mm

14D

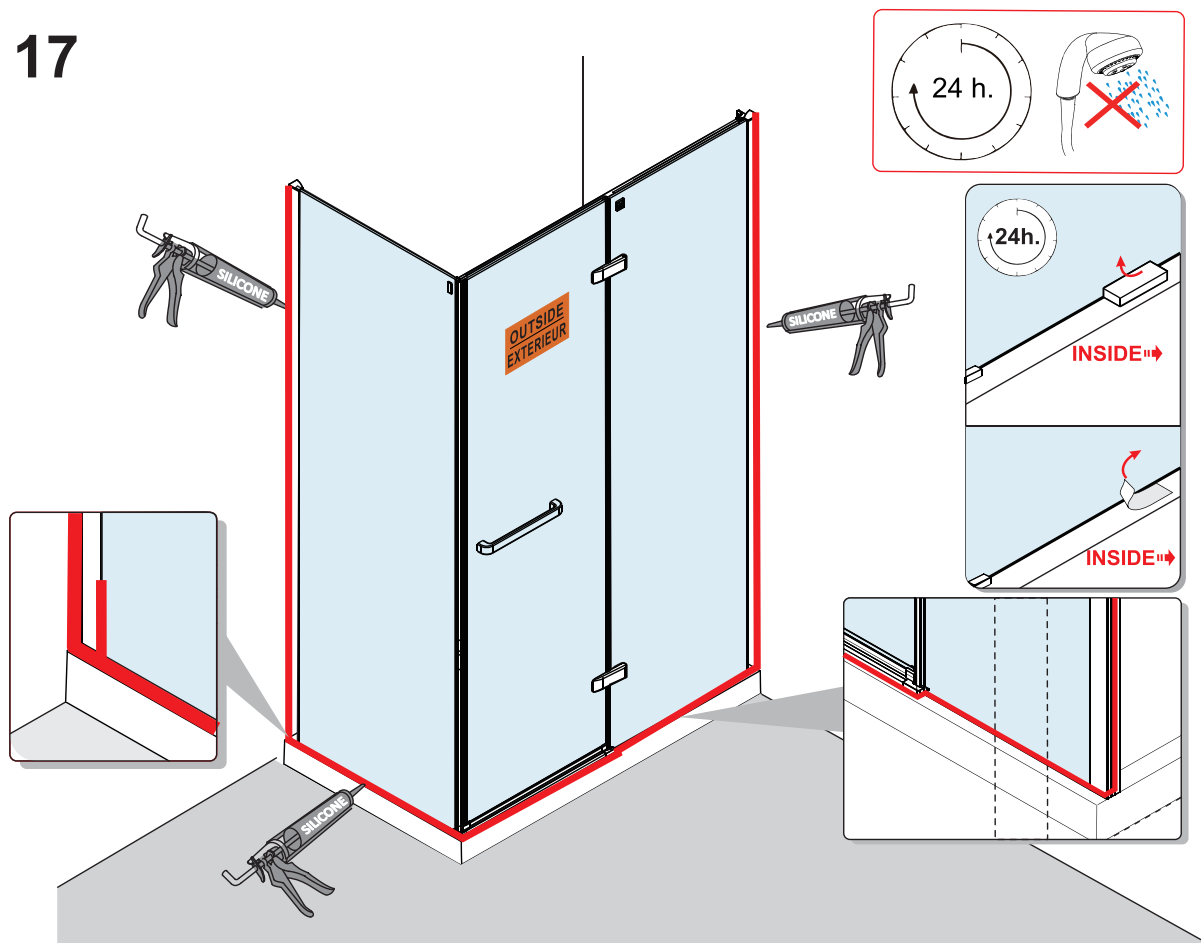
A06S0037

14E

A06S0038



17



To download the Declaration of Performance (DOP) for this product please use the link below.

<https://merlynshowering.com/aftersales-support/dop-certs/>

For further information please contact IRL: 056 7791 555, UK: 08081011429