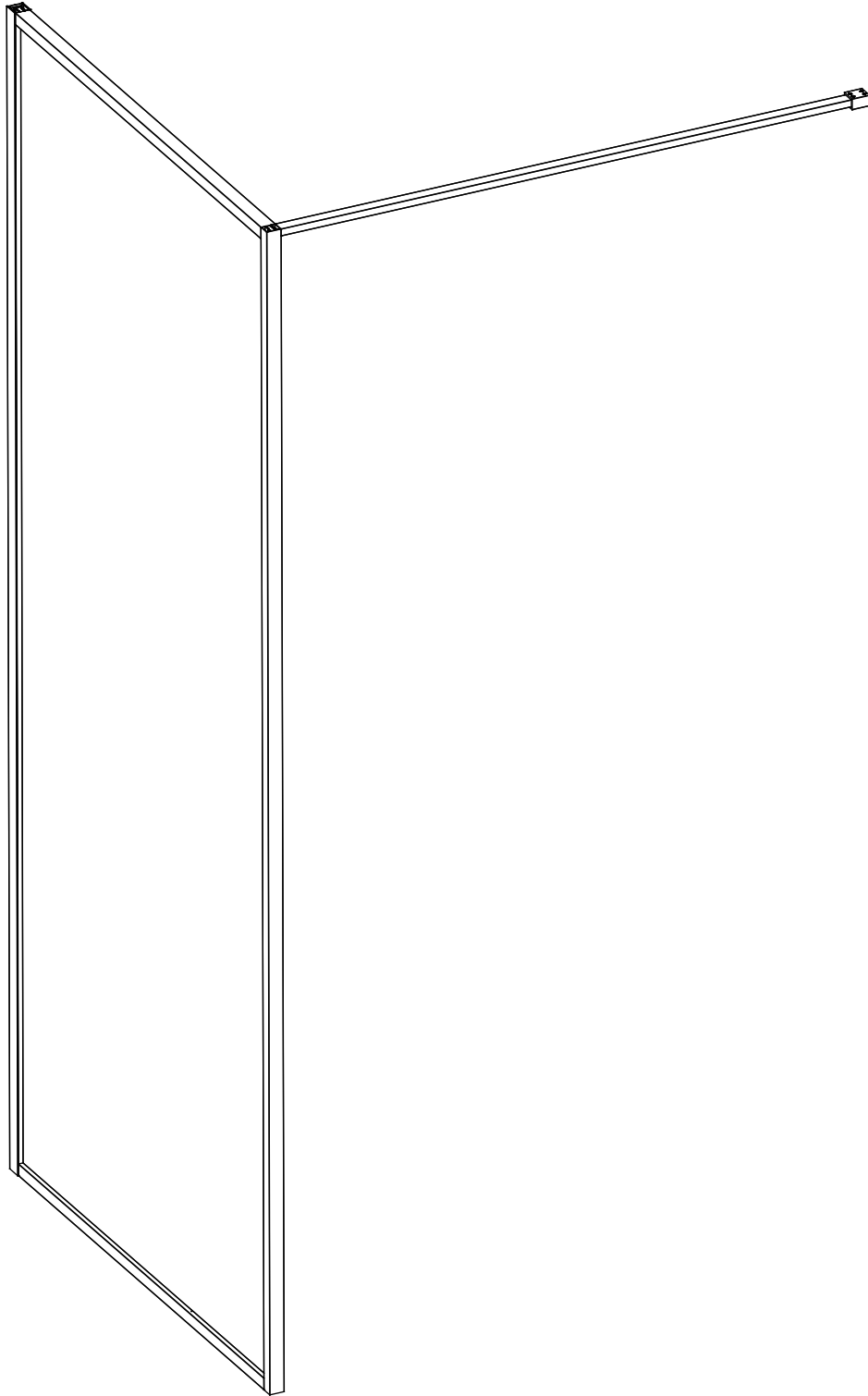


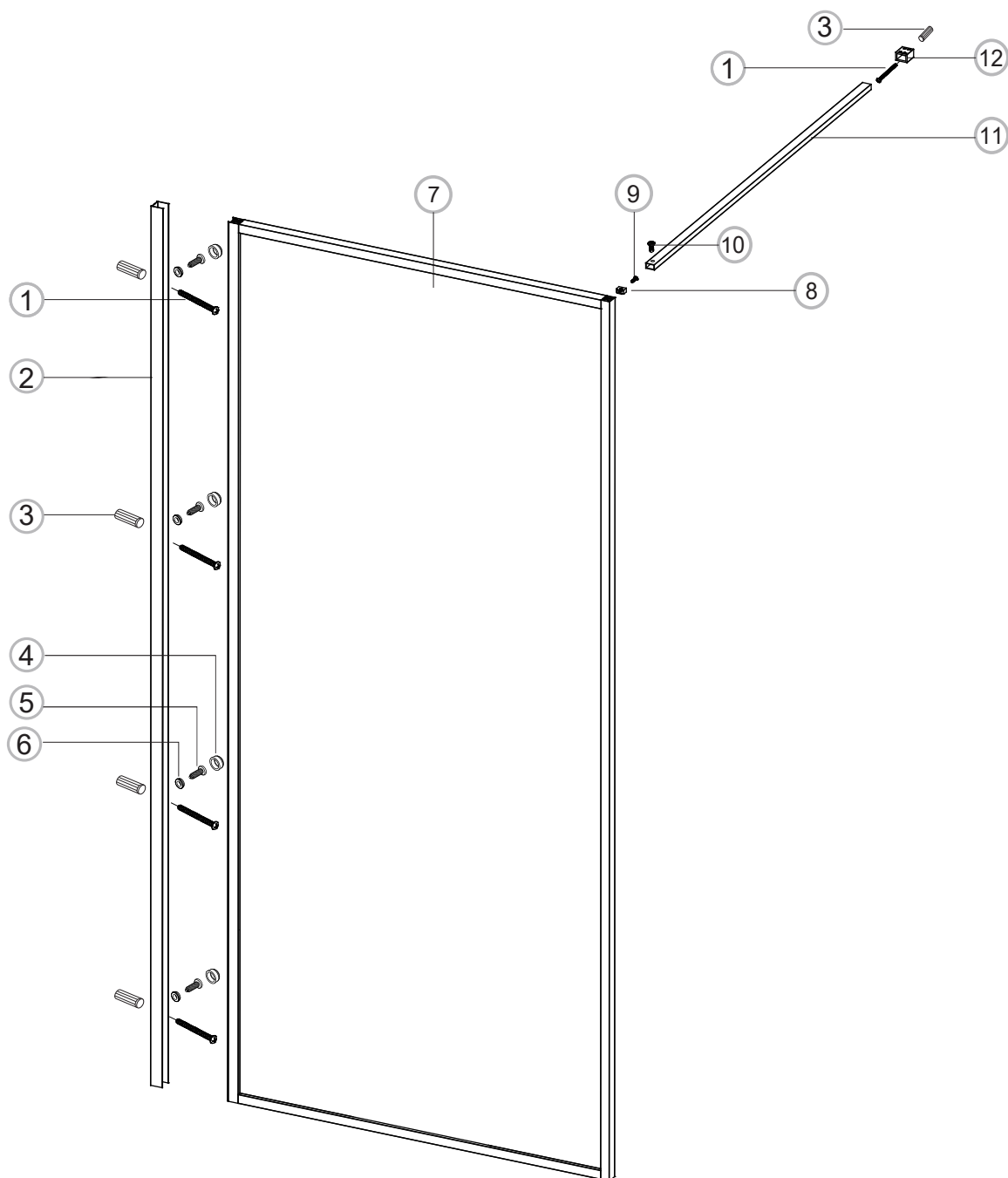
# COLOUR FRAMED SHOWER WALL



## INSTALLATION INSTRUCTIONS

If you install the product in a way that differs from this manual this will void all guarantees. Before installation check that the product meets all your requirements and is not damaged. By proceeding with installation, you accept the condition of the product. The wall plugs supplied with the installation kit are for use in solid walls. Hollow or 'stud partition' walls will require alternative fixings. Please consult your local hardware supplier for the correct type.

Size	Adjustment
800	775-790
900	875-890
1000	975-990
1200	1175-1190



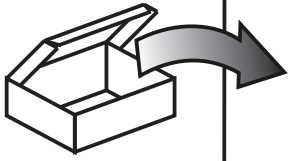
No.	Qty	Part No.
1	5	SP02SY51
2	1	B0022BBR/ B0022BBZ
3	5	SP02SP12
4	4	B0023BBR / B0023BBZ
5	4	B0034
6	4	B0024BBR / B0024BBZ

No.	Qty	Part No.
7	1	FIXED GLASS PANEL
8	1	B0032
9	1	B0031
10	1	B0033
11	1	B0025BBR / B0025BBZ
12	1	B0027BBR / B0027BBZ

**NOTE:**

Brushed Brass Colour Finish = BBR

Brushed Bronze Colour Finish = BBZ



SP02SY51 x 5  
ST4X30



SP02SP12 x 5



x 1



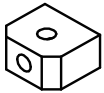
B0023BBR X 4  
B0023BBZ X 4



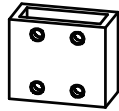
B0024BBR X 4  
B0024BBZ X 4



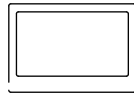
B0034 x 4  
4X10



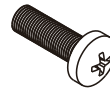
B0032 X 1



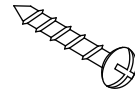
B0027BBR X 1  
B0027BBZ X 1



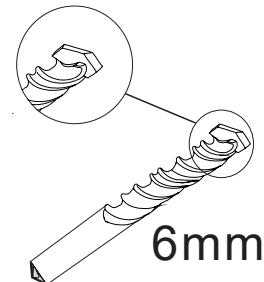
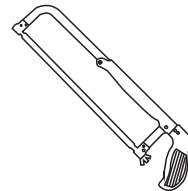
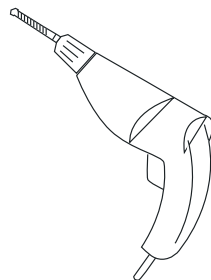
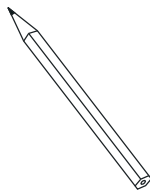
B0025BBR X 1  
B0025BBZ X 1



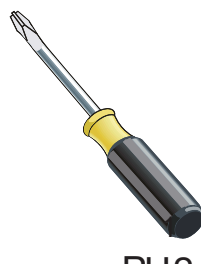
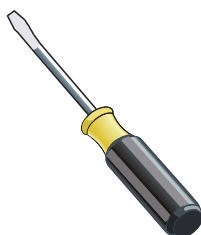
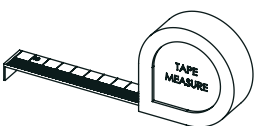
B0033 X 1



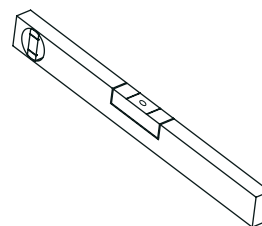
B0031 X 1



6mm

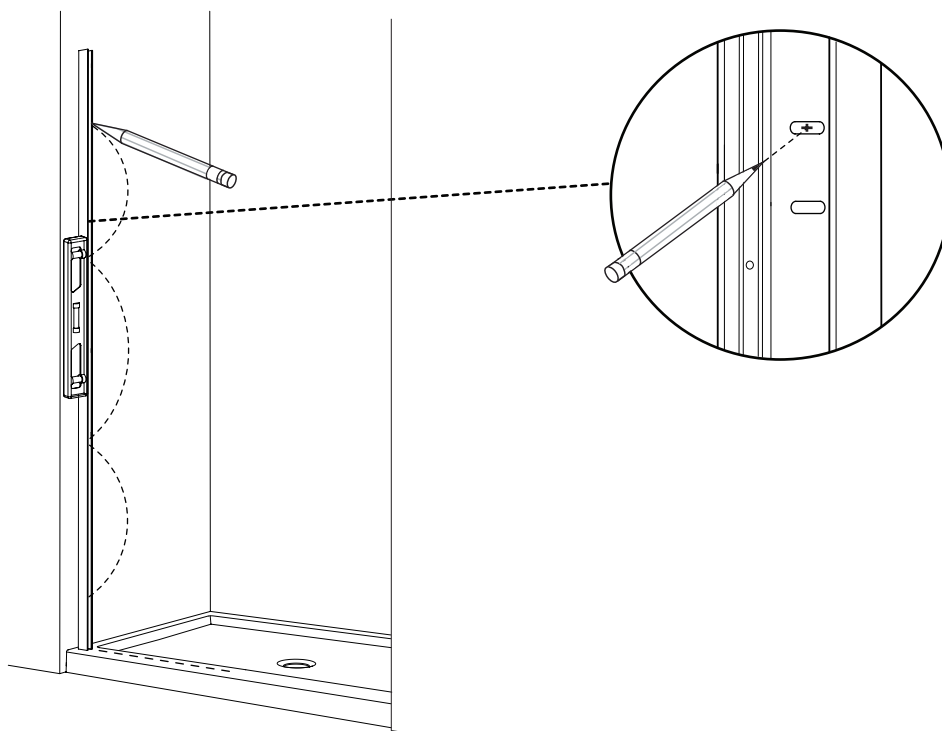


PH2



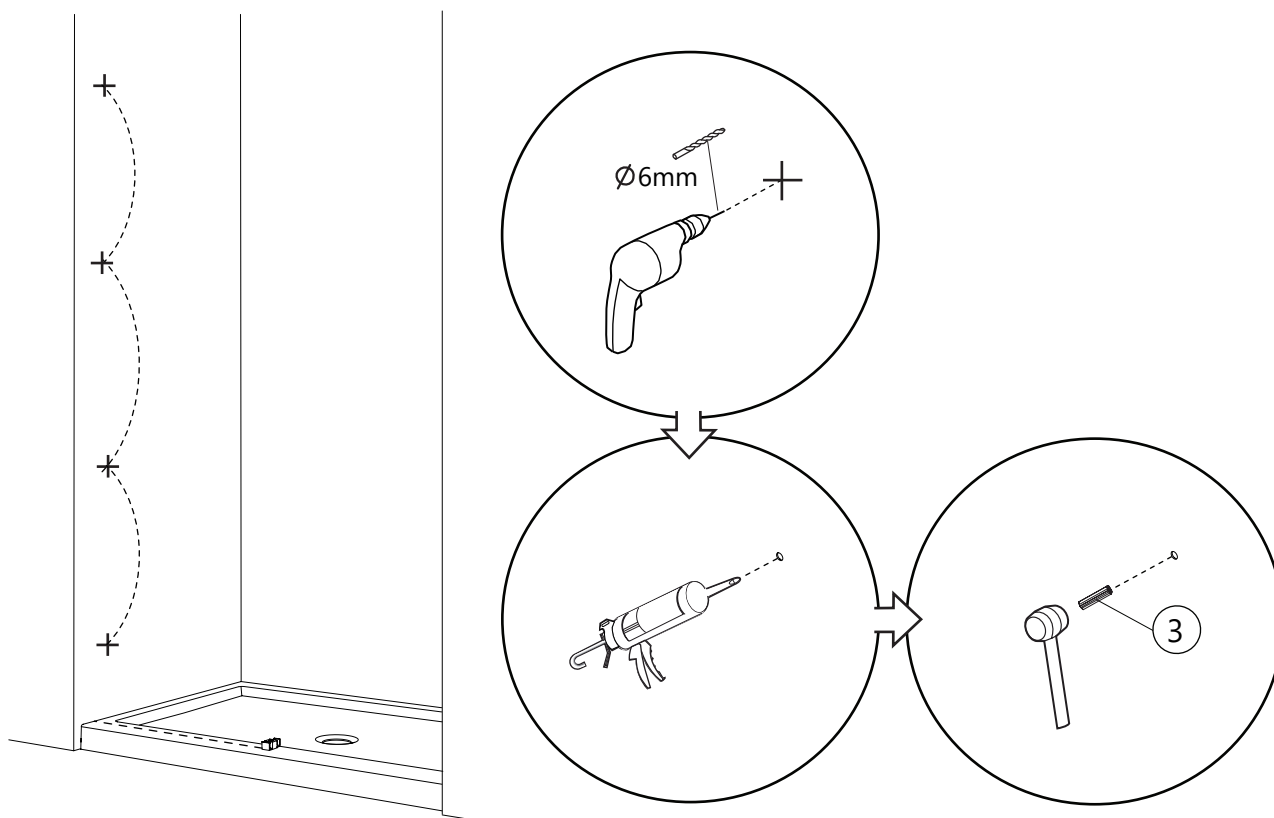
## Installation Steps

Step in min 10mm and mark the wall profile screw hole locations on the wall



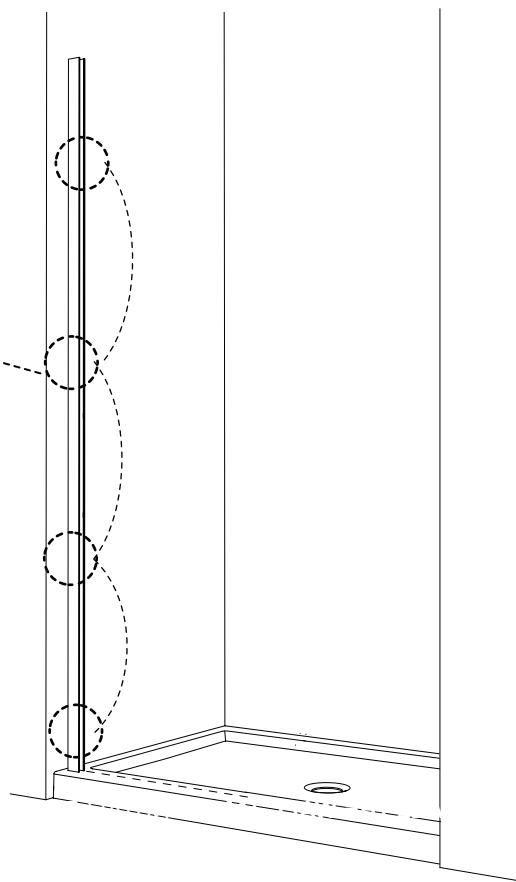
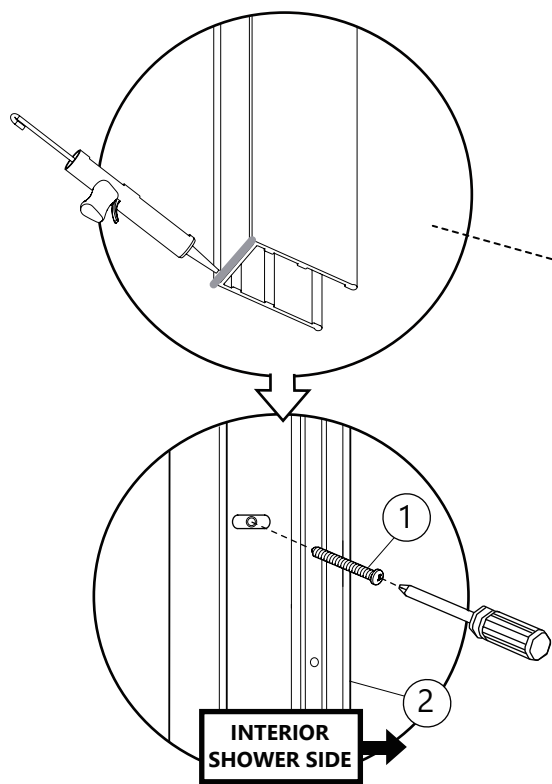
1

Drill, silicone and install the wall profiles using 4 wall fixings.

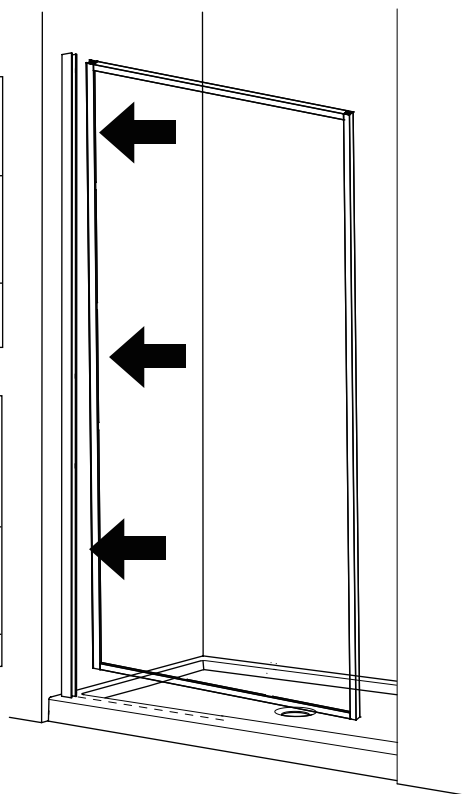
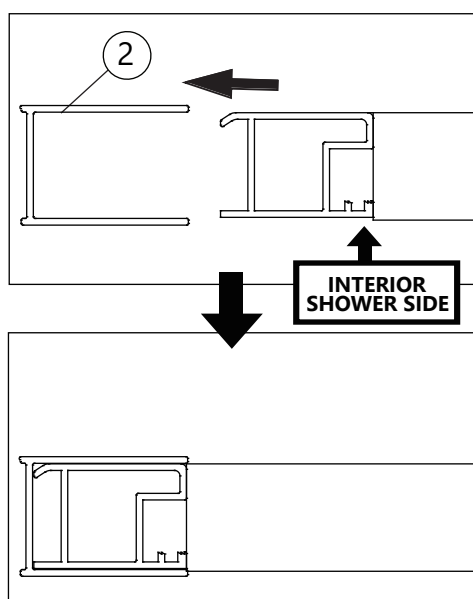


2

Secure the wall profile to the wall using the wall fixing screws.



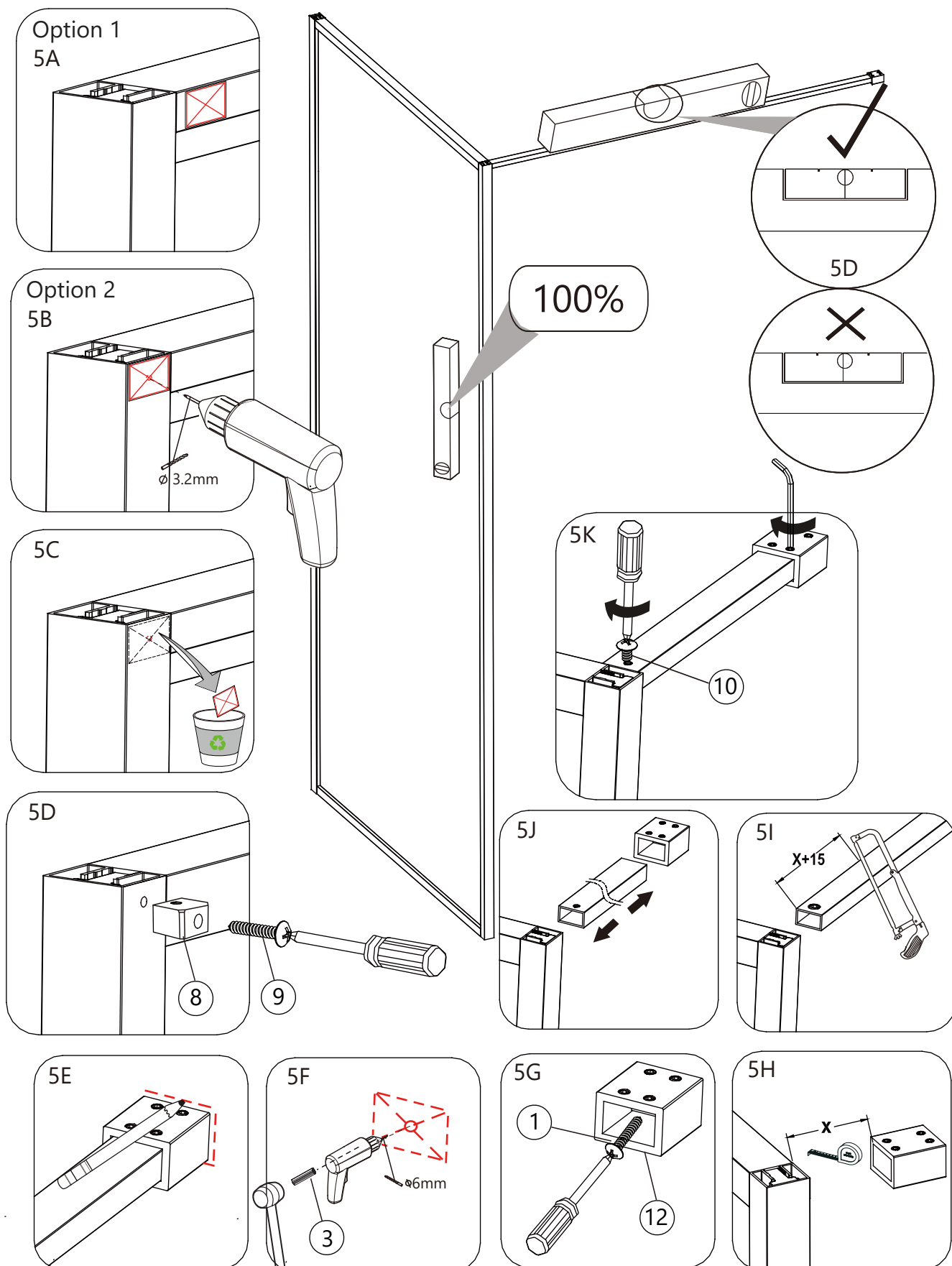
3



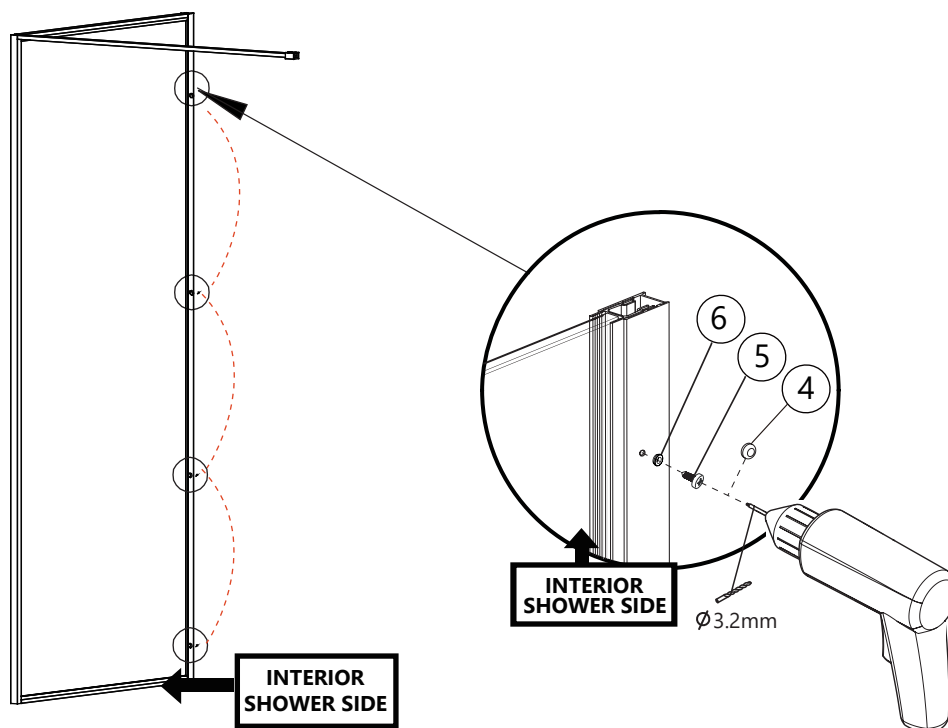
4

## Support bar installation -

Choose between one of two possible rail fixing positions on the top rail 5A or 5B on upright profile.

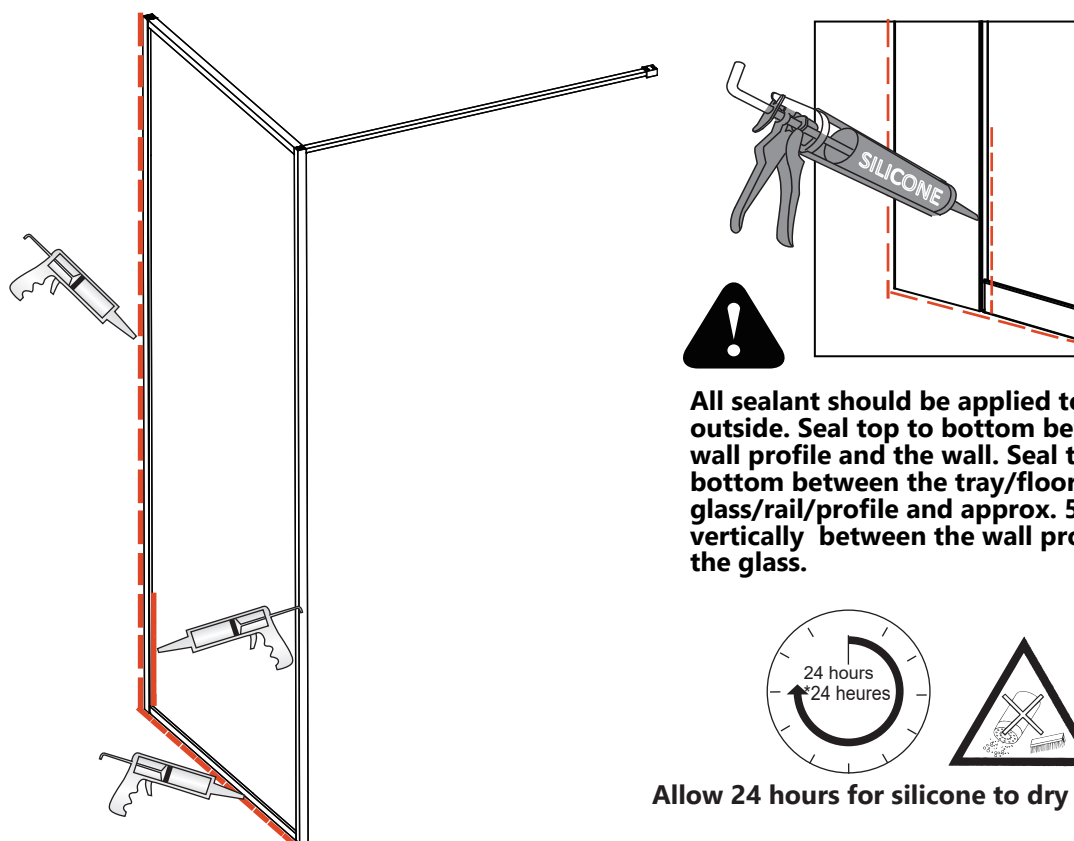


Adjust the shower enclosure ensuring it is level. Drill 4 equally spaced holes along the length of the wall profile to secure the shower wall.



6

Seal the shower unit



7