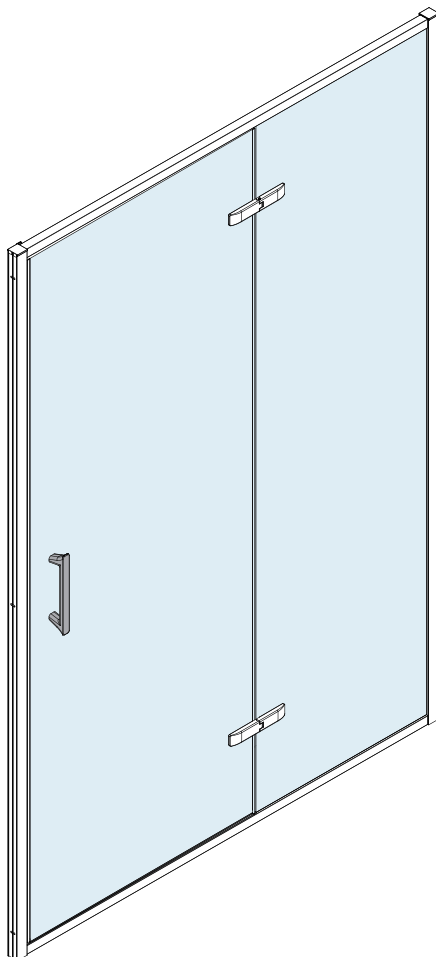


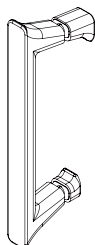
M E R L Y N

sleek

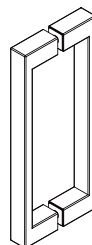
## HINGE INLINE DOOR



**Sleek Chrome**



**Sleek Black / Sleek BBR**



## INSTALLATION GUIDE

## **IMPORTANT:**

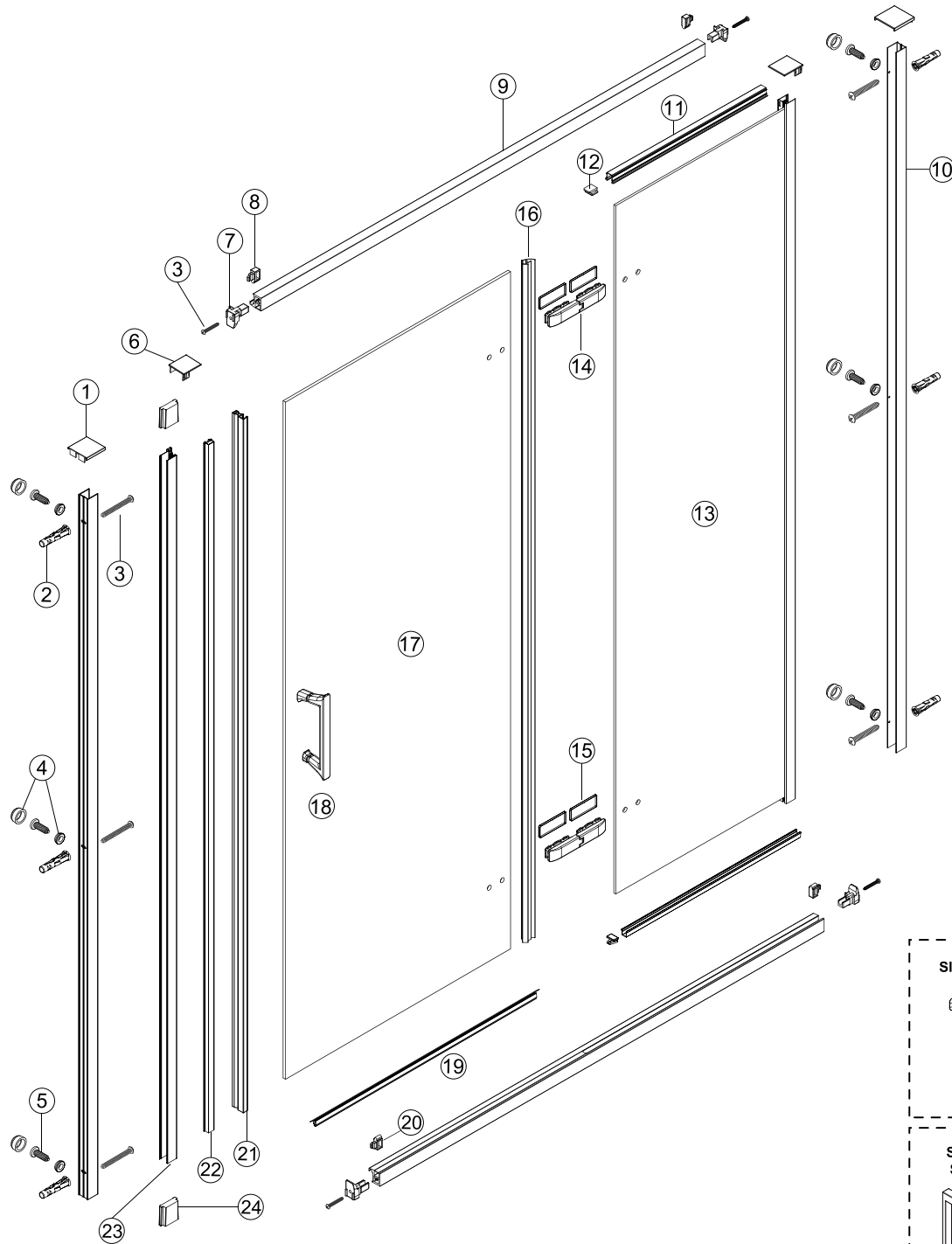
**Please read the complete instructions  
before commencing fitting.**

Make sure the tray is 100% level in all directions.  
Do Not attempt to install the product unless you  
can tick all 4 boxes satisfactorily.

- Check that you have the tools required ☐
- Check the installation site is compatible with  
the sizes of door supplied ☐
- Check all the enclosure components are present ☐
- Check the installation kit is complete ☐

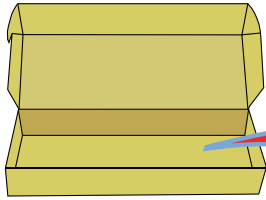
The wall plugs supplied with the installation kit are  
for use in solid walls. Hollow or 'stud partition'  
walls will require alternative fixings. Please consult  
a hardware supplier for the correct type.  
It may also be necessary to consult your tiling  
supplier about the correct method for drilling  
your tiles.

**ATTENTION: TAKE EXTREME CARE WHEN  
HANDLING GLASS, WEAR PROTECTIVE EYEWEAR  
AND CLOTHING. DO NOT LEAVE THE GLASS ON  
HARD SURFACES AND AVOID CONTACT BETWEEN  
THE GLASS EDGES AND HARD SURFACES OR  
IMPACTS DURING THE INSTALLATION.**

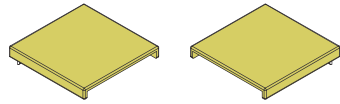


**Note: Chrome / Matt black / Brushed brass colour are available, MB means Matt black, BBR means burshed brass.**

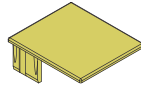
No.	QTY	descriptions	Part number			No.	QTY	descriptions	Part number		
①	1	Wall profile cover cap	SP0SS6026	SP0SS6026MB	SP0SS6026BBR	⑬	1	Fixed panel	C	C	C
②	6	Wall plug	A03S0090	A03S0090	A03S0090	⑭	2	Hinge set	SP0SS6079	SP0SS6079MB	SP0SS6079BBR
③	6	4x30 screw	A03S0089	A03S0089	A03S0089	⑮	4	Cover cap	SP0SS6091	SP0SS6091MB	SP0SS6091BBR
④	6	Screw cover cap & clip	SP0SS6028	SP0SS6028MB	SP0SS6028BBR	⑯	1	Upright seal	SP0SS6075	SP0SS6075	SP0SS6075
⑤	6	4x10 screw	SP0V4110	SP0V4110	SP0V4110	⑰	1	Moving panel	D	D	D
⑥	2	Frame cover cap	SP0SS6027	SP0SS6027MB	SP0SS6027BBR	⑱	2	Handle	SP0SS6029	SP0SS6058MB	SP0SS6058BBR
⑦	2	End block	SP0SS6086	SP0SS6086	SP0SS6086	⑲	1	Bottom seal	E	E	E
⑧	2	Clip long	SP0SS6087	SP0SS6087MB	SP0SS6087BBR	⑳	2	Clip short	SP0SS6088	SP0SS6088MB	SP0SS6088BBR
⑨	2	Top/Bottom rail	A	A-MB	A-BBR	㉑	1	Magnet seal	SP0SS6077	SP0SS6077	SP0SS6077
⑩	2	Wall profile	SP0SS6001	SP0SS6001MB	SP0SS6001BBR	㉒	1	Magnet gasket	SP0SS6076	SP0SS6076	SP0SS6076
⑪	2	Bottom seal	B	B	B	㉓	1	Closing post	SP0SS6061	SP0SS6061MB	SP0SS6061BBR
⑫	2	End cap	SP0SS6085	SP0SS6085MB	SP0SS6085BBR	㉔	2	Seal plug	SP0SS6093	SP0SS6093	SP0SS6093



Note: Chrome / Matt black / Brushed brass colour are available, MB means Matt black, BBR means burshed brass.



SP0SS6026/MB/BBR  
X1



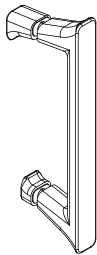
SP0SS6027/MB/BBR  
X2



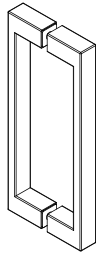
SP0V4110  
X6



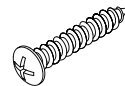
SP0SS6028/MB/BBR  
X6



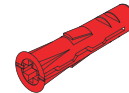
SP0SS6029  
X1



SP0SS6058MB/BBR  
X1



A03S0089  
X6



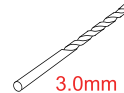
A03S0090  
X6



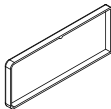
SP08S1300511  
X1



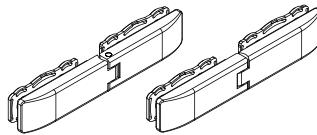
8S1300611  
X1



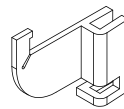
SP08S1301152  
X1



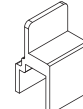
SP0SS6091/MB/BBR  
X4



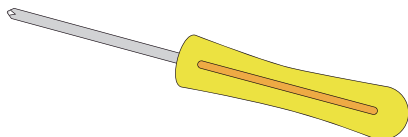
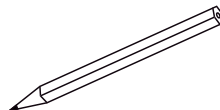
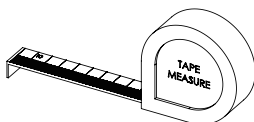
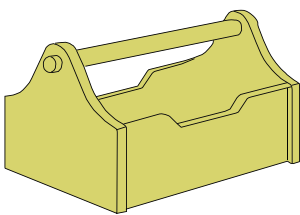
SP0SS6079/MB/BBR  
X1



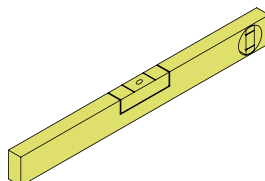
A06S0039  
X2



SP0SS6084  
X2



PH2



∅6

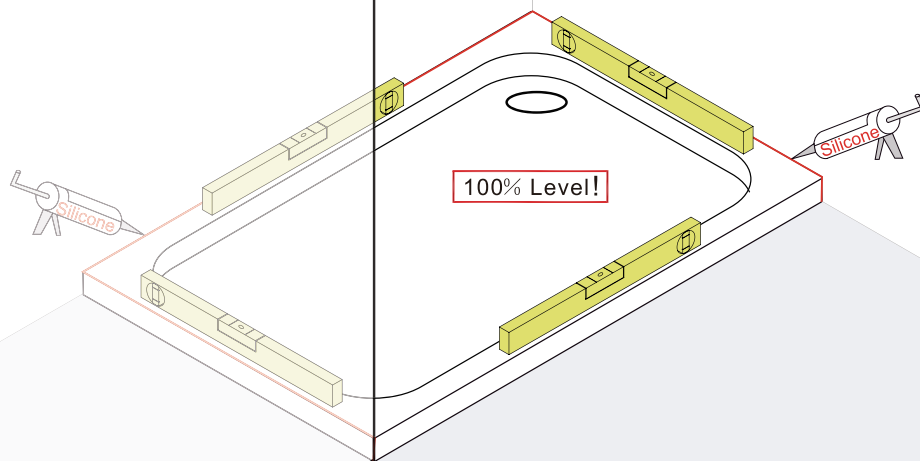
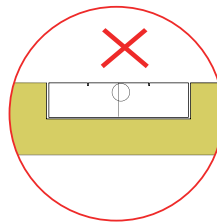
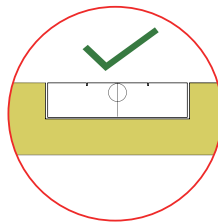


1

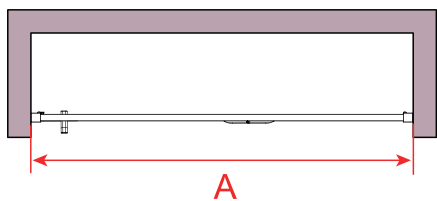
Ensure the shower tray is level in all directions and is properly sealed to the wall. The wall must be tiled down to the top edge of the tray.

Do not angle out bottom tile.  
TRAY MUST BE LEVEL IN ALL DIRECTIONS!

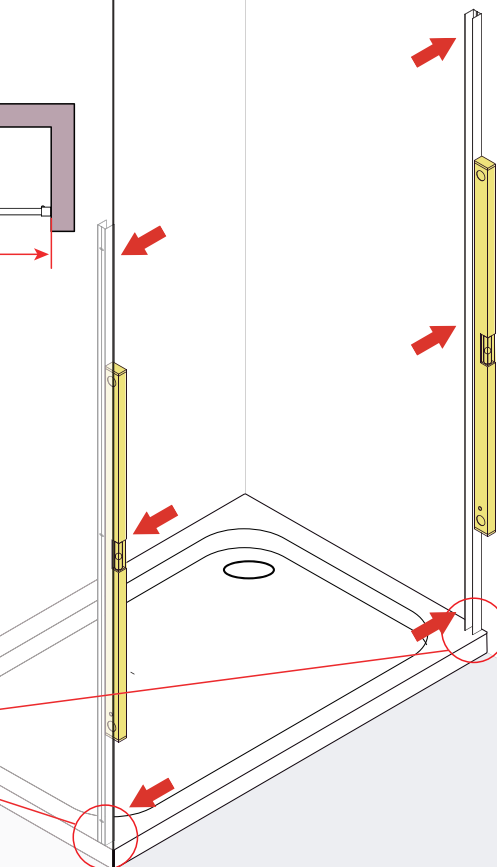
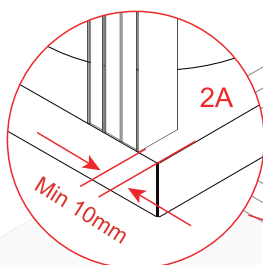
TRAY MUST BE SEALED FULLY AROUND WHERE THE TRAY MEETS THE WALL.



2



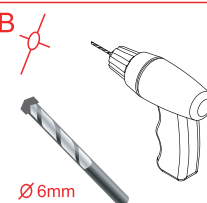
Size	A
1200	1150-1190
1400	1350-1390



2A



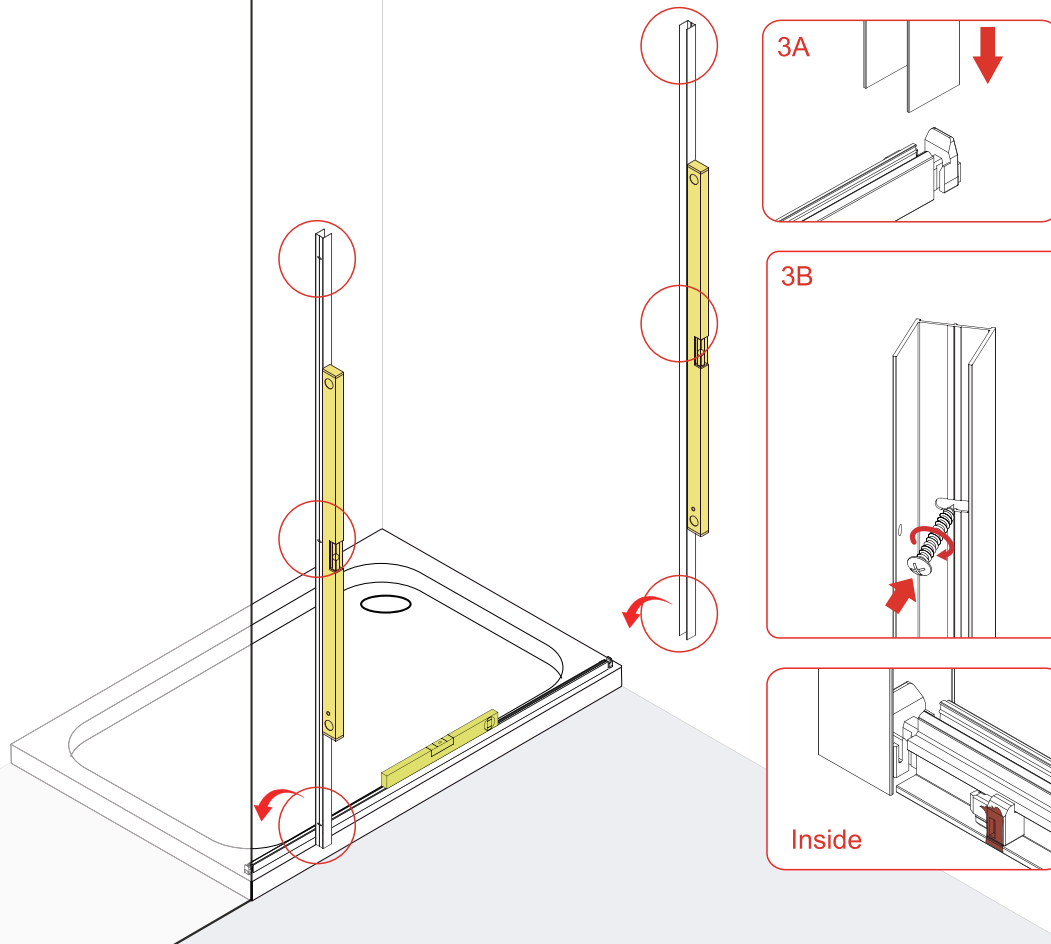
2B



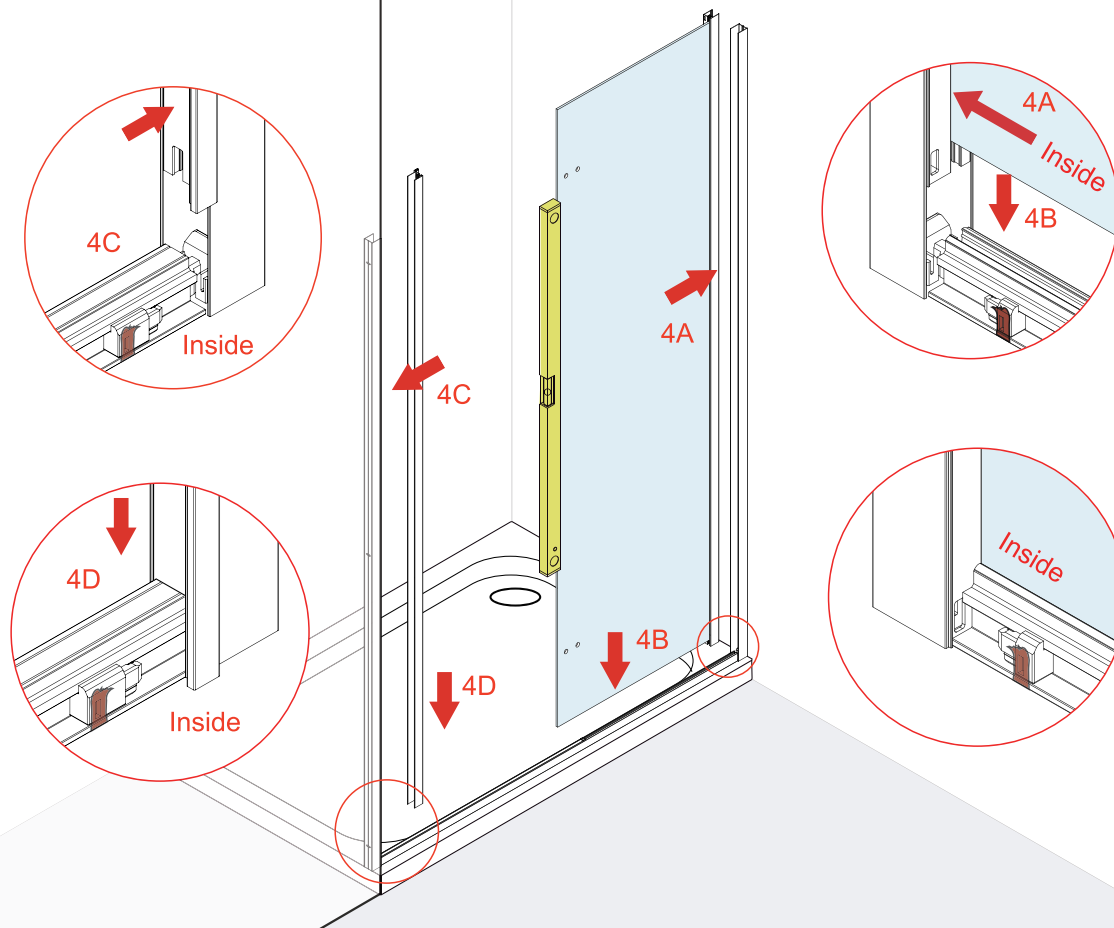
2C



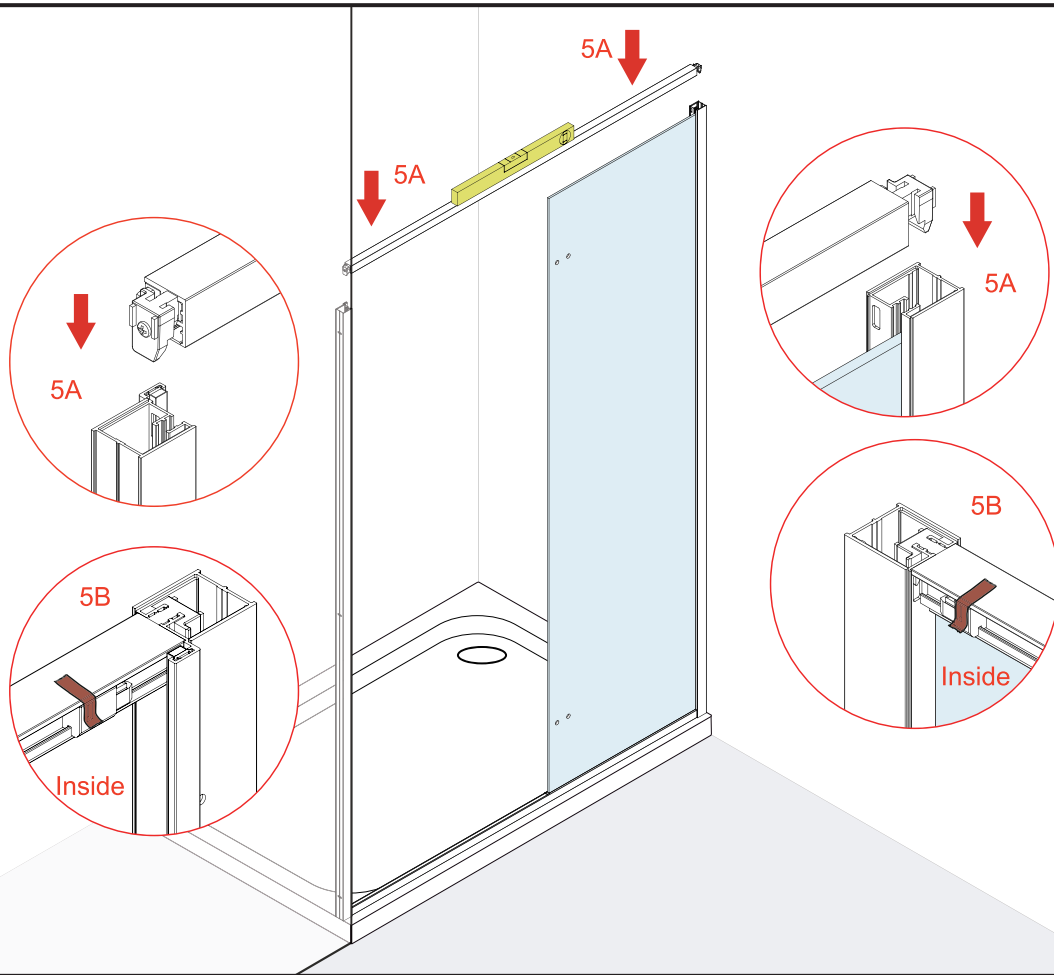
3



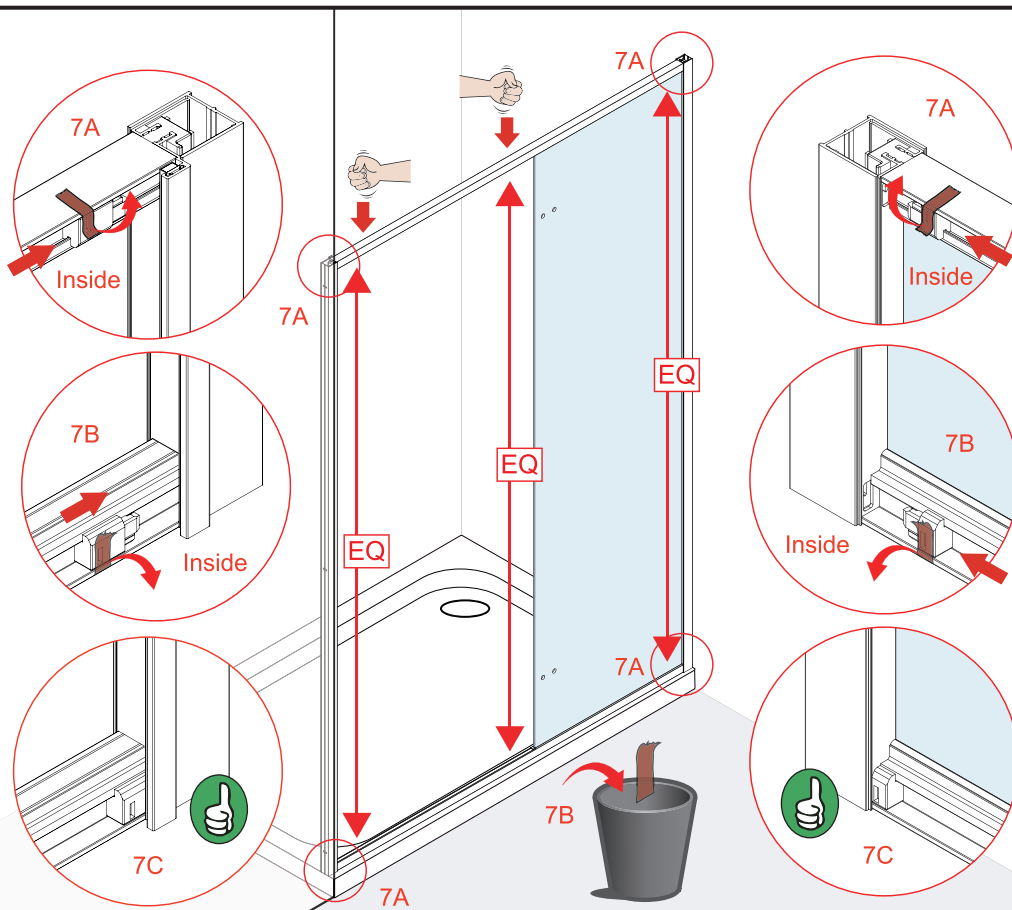
4



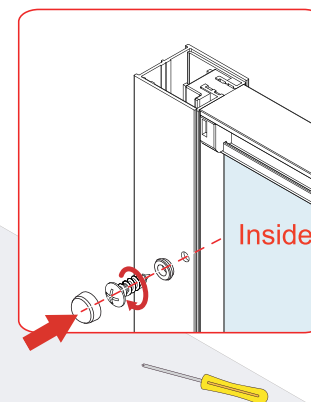
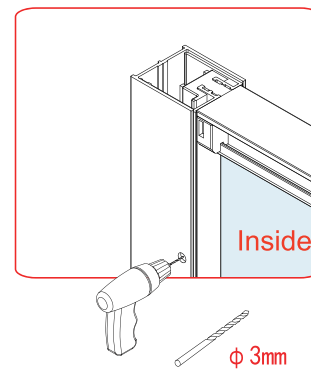
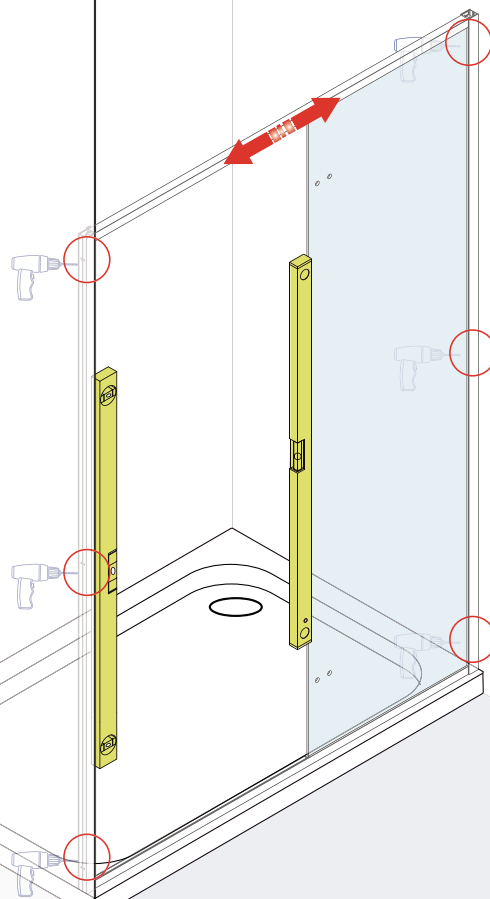
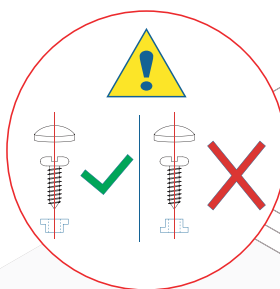
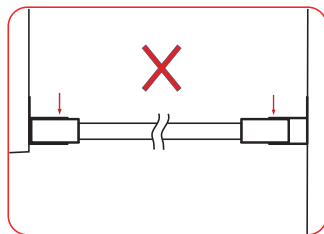
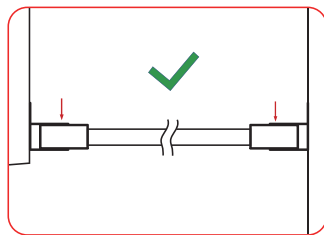
5



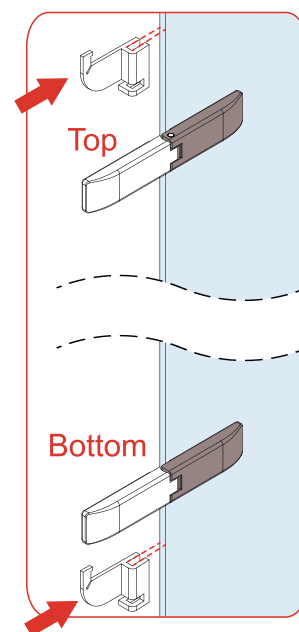
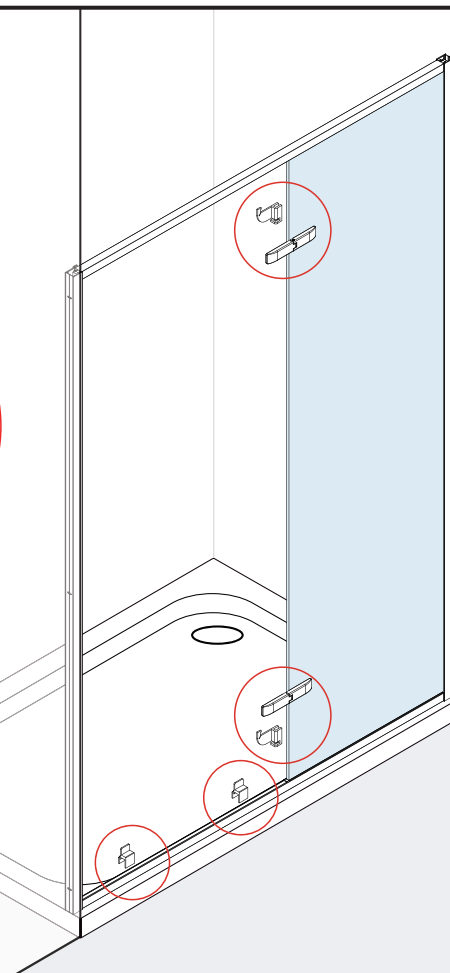
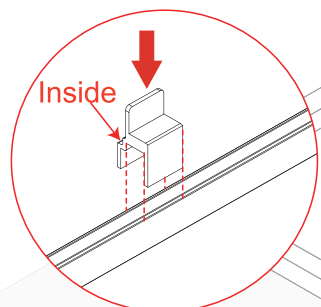
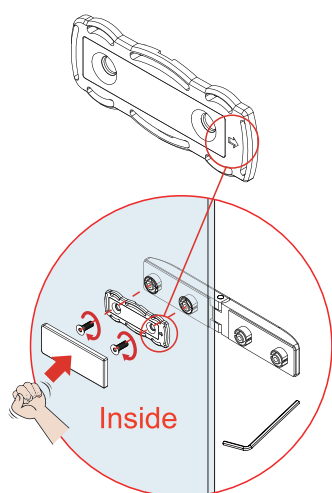
6



7

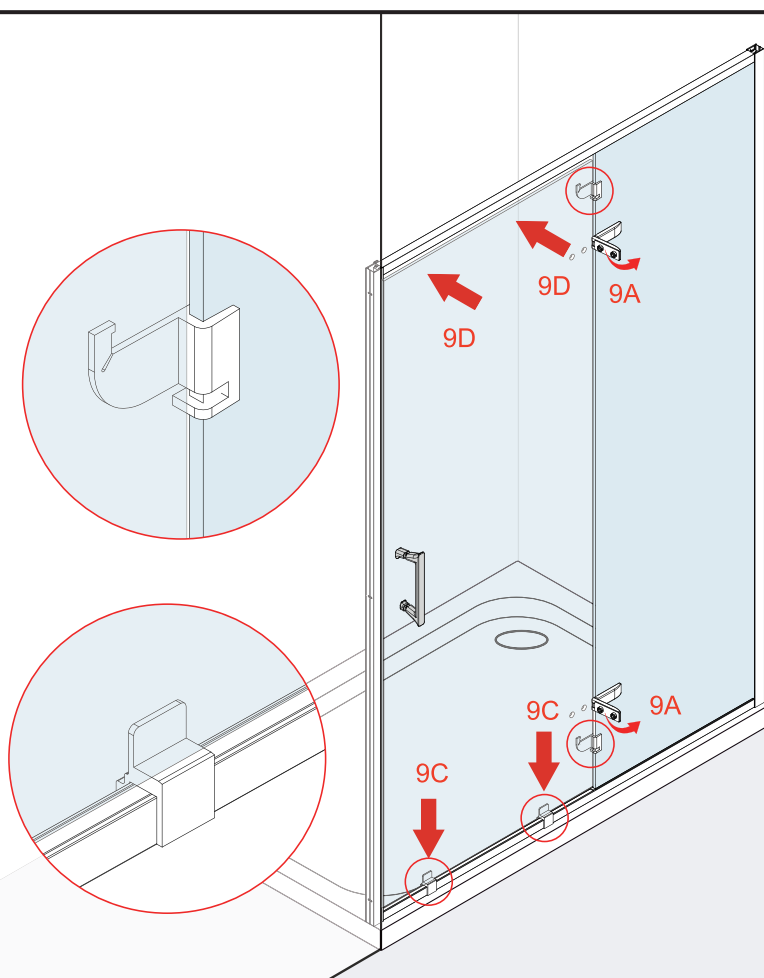
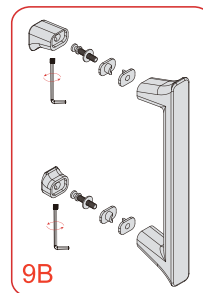
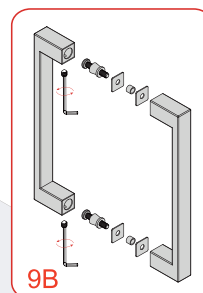


8

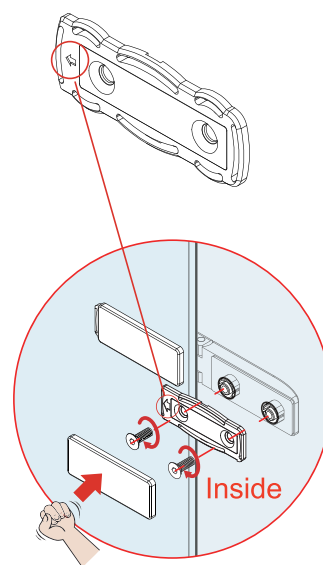
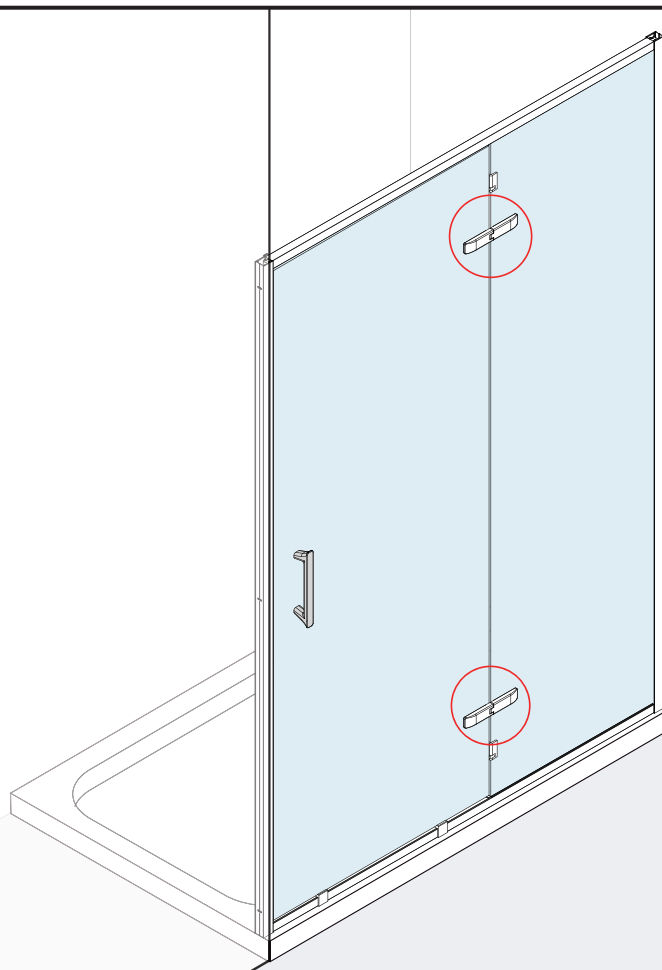




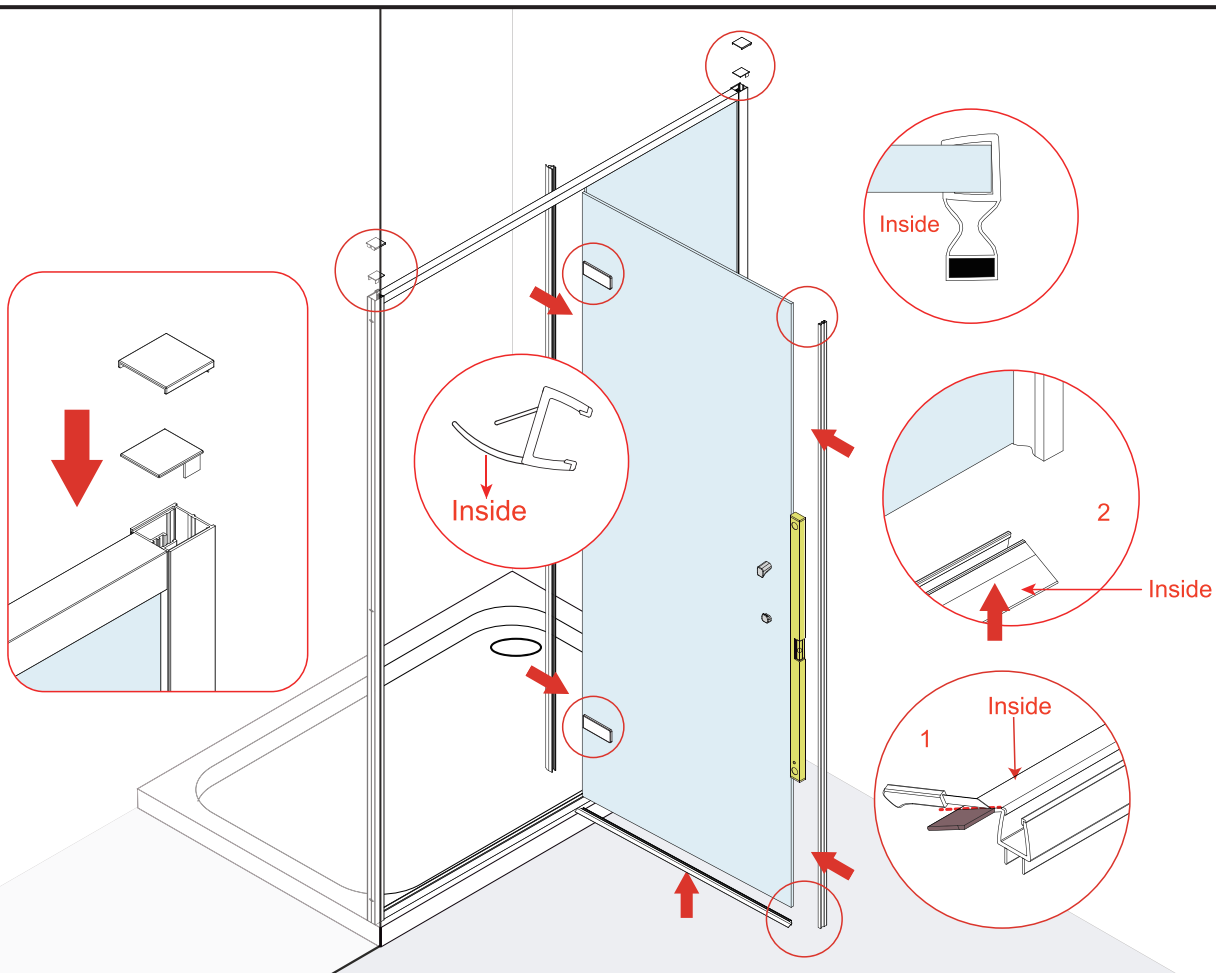
9

**Sleek Chrome****Sleek Black  
Sleek BBR**

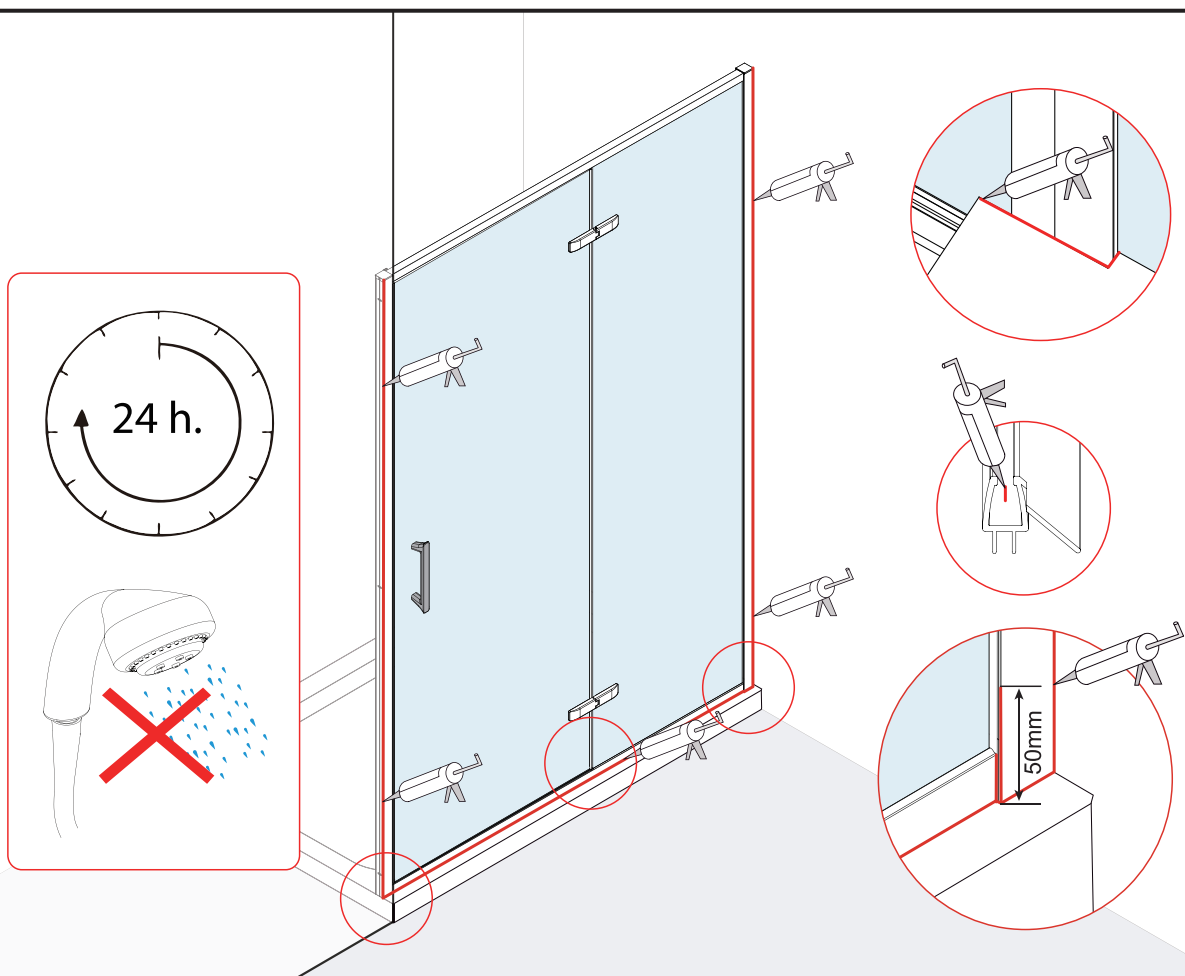
10



11



12



## **CLEANING**

It is important to clean your Merlyn shower door after every use. Wipe down all the glass and metal parts with a soft cloth. Do not allow lime scale to build up in hard water areas. Ensure that any residual water on the glass is removed after every use.

- Clean the glass regularly using soapy water.
- Do not use abrasive products on any surfaces.

Chrome is vulnerable to acid attack and some strong household cleaners including strong disinfectants, denture cleaners, hair dyes, wine making chemicals and photographic chemicals may contain acid. These materials may have a varying effect on the surface from black spots/streaks (which cannot be removed) to pitting the surface. Contact with these materials should be avoided.

## **TROUBLE SHOOTING**

### **Door Not functioning properly**

1. Is the tray 100% level? (step 1)
2. Do the finished tile measurements fall within the adjustment A listed on (step 2)?
3. Are the wall profiles plumb?(step 2)

### **Door Leaking**

1. Was the tray adequately sealed before the enclosure was installed?(step 1)
2. Is the door sealed correctly ?(step 11)

To download the Declaration of Performance (DOP) for this product  
please use the link below.

<https://merlynshowering.com/aftersales-support/dop-certs/>

For further information please contact: IRL:0567791555 UK:08081011429